

General Purpose, Three Phase

Dripproof, Rigid Base



Applications: General purpose use on compressors, pumps, conveyors, fans, blowers, and other machinery in environments that are relatively clean and dry. For use outdoors, a drip cover may be required (see Accessories section).

Features:



- Ball bearings (roller bearings, as noted)
- NEMA Service factors
- Will accept C-Face Kits except where noted, see Accessories Section
- UL Recognized and CSA Certified
- See XRI® Dripproof in Premium Efficiency section for NEMA Premium efficiencies

Suitable for use on VFD per guidelines on page 13.

HP	RPM	VOLTS	FRAME	BRGS.	OVER LOAD	CAT. NO.	MODEL NO.		MULT. SYMB.	NOM. EFF.	F.L. AMPS	WGHT. LBS.	"C" DIM.	FOOT NOTES
1/4	1800	208-230/460	48	BALL	NONE	G044 ★	48T17D2000		F1	62.0	1.2-1.3/0.6	14	9.34	20,25
	1200	208-230/460	56	BALL	NONE	G045	-----		F1	52.5	1.8-2.1/1.0	17	9.94	20
1/3	1800	200-208	56	BALL	NONE	G046	56T17D2128		F1	67.0	1.8-1.9	15	9.97	25
	1800	208-230/460	56	BALL	NONE	G047 ★	56T17D2095		F1	67.0	1.5-1.6/0.8	15	9.97	20,25
	1200	208-230/460	56	BALL	NONE	G061	56T11D5301		F1	62.0	1.9-2.2/1.1	19	9.94	20
1/2	3600	208-230/460	56	BALL	NONE	K027	56T34D5300		F1	66.0	2.1-2.2/1.1	20	10.44	20
	1800	200-208	56	BALL	NONE	G062 ★	56T17D2114		F1	70.0	2.5-2.65	17	10.47	25
	1800	208-230/460	56	BALL	NONE	G063 ★	56T17D2094		F1	70.0	2.1-2.2/1.1	17	10.47	20,25
	1800	208-230/460	56	BALL	AUTO	G905 ★	56T17D5336		F1	68.0	2.3-2.4/1.2	21	10.44	VC,20
	1800	575	56	BALL	NONE	G065 ★	56T17D2112		F1	70.0	0.9	17	10.47	25
	1200	208-230/460	56	BALL	NONE	G067 ★	56T11D5302		F1	68.0	2.4-2.7/1.3	23	10.44	20
	900	208-230/460	143T	BALL	NONE	H180	143TTDR5401		E6	64.0	2.9-3.0/1.5	32	11.49	5,13
	3/4	3600	208-230/460	56	BALL	NONE	G080 ★	56T34D5301		F1	74.0	3.0-3.2/1.6	21	10.44
1800		200-208	56	BALL	NONE	G082 ★	56T17D2111		F1	75.5	3.2-3.3	21	10.97	25
1800		208-230/460	56	BALL	NONE	G084 ★	56T17D2093		F1	75.5	2.7-2.8/1.4	20	10.97	20,25
1800		208-230/460	56	BALL	AUTO	G908 ★	56T17D5339		F1	75.5	2.9-3.0/1.5	23	10.44	VC,20
1800		575	56	BALL	NONE	G086 ★	56T17D2110		F1	75.5	1.1	20	10.97	25
1200		208-230/460	56	BALL	NONE	G088	56T11D5303		F1	74.0	3.1-3.2/1.6	25	10.94	20
1200		208-230/460	143T	BALL	NONE	H150 ★	143TTDR5376		E6	74.0	3.1-3.2/1.6	29	10.99	5,20
900		208-230/460	145T	BALL	NONE	H181 ★	145TTDR5401		E6	72.0	4.0-4.0/2.0	42	12.99	20
1	3600	208-230/460	56	BALL	NONE	K000 ★	56T34D5302		F1	74.0	3.7-3.7/1.8	23	10.44	
	1800	200	143T	BALL	NONE	E901 ★	143TTDR5348		E2	82.5	3.6	40	12.49	5,13
	1800	200-208	56	BALL	NONE	K003 ★	56T17D2113		F1	76.5	3.9-4.1	23	11.47	25
	1800	200-208	143T	BALL	NONE	H601 ★	143TTDR5327		E6	77.0	4.15-4.3	27	10.99	5,13
	1800	200-208	143T	BALL	AUTO	U416	143TTDR4061		E2	82.5	3.6-3.43	40	12.49	5,13
	1800	208-230/460	56	BALL	NONE	K004 ★	56T17D2092		F1	76.5	3.4-3.4/1.7	22	11.47	20,25
	1800	208-230/460	56	BALL	AUTO	G921 ★	56T17D5342		F1	77.0	3.5-3.6/1.8	24	10.94	VC,20
	1800	208-230/460	56HZ	BALL	AUTO	K063 ★	56T17D3301		F1	77.0	3.5-3.6/1.8	27	10.99	Z,5,20
	1800	208-230/460	56HZ	BALL	AUTO	K067 ★	56T17D3305		F1	77.0	3.5-3.6/1.8	30	10.99	VC,Z,5,20
	1800	208-230/460	56HZ	BALL	MANUAL	K085	56T17D3312		E2	77.0	3.5-3.6/1.8	27	10.99	Z,5,20
	1800	208-230/460	143T	BALL	NONE	E715 ★	143TTDR5347		E2	82.5	3.3-3.1/1.55	34	12.49	5,13,20
	1800	208-230/460	143T	BALL	AUTO	U417 ★	143TTDR4052		E2	82.5	3.3-3.1/1.55	40	12.49	5,13,20
	1800	208-230/460	143T	BALL	AUTO	U418 ★	143TTDR4051		E2	82.5	3.3-3.1/1.55	38	12.49	VC,5,13,20
	1800	575	56	BALL	NONE	K049 ★	56T17D2130		F1	76.5	1.4	22	10.94	25
	1800	575	56HZ	BALL	AUTO	K081	-----		F1	77.0	1.45	27	10.99	Z,5
	1800	575	143T	BALL	AUTO	U922	143TTDR4055		E2	82.5	1.1	39	12.49	5,13
	1800	575	143T	BALL	NONE	E912 ★	143TTDR5351		E2	82.5	1.1	41	12.49	5,13
	1200	200	145T	BALL	NONE	E785	145TTDR4078		E2	80.0	4.1	47	13.49	5,13
	1200	200	145T	BALL	NONE	H678	145TTDR5379		E6	75.5	4.8	32	11.49	5,13
	1200	208-230/460	56H	BALL	NONE	K007	56T11D5304		F1	75.5	4.1-4.2/2.1	29	11.44	5,20
1200	230/460	145T	BALL	NONE	E728 ★	145TTDR4076		E2	80.0	3.6/1.8	47	13.49	5,13,20	

★ Stock Model

Catalog numbers (Cat No.) highlighted in bold blue have efficiency levels that meet or exceed U.S. EPAact and/or NRCan Canadian standards.

Footnotes:

- VC Voltage Change Device feature for quick voltage changes
- Z 56HZ with 7/8" shaft dia., 3-1/2" shaft height, and slotted 56 frame base
- 5 56H, 143T, and 145T Combination Base with 12 mounting holes

- 13 F1 Mounting Only, Cannot reassemble to F2
- 20 Rated 60/50 hertz, 190/380 or 380 volt at next lower horsepower
- 25 Motor will NOT accept C-Face Kits

Continued on next page.

General Purpose, Three Phase

Dripproof, Rigid Base

HP	RPM	VOLTS	FRAME	BRGS.	OVER LOAD	CAT. NO.	MODEL NO.		MULT. SYMB.	NOM. EFF.	F.L. AMPS	WGHT. LBS.	"C" DIM.	FOOT NOTES
1	1200	575	145T	BALL	NONE	E934	145TTDR4080		E2	80.0	1.4	47	13.49	5,13
	900	230/460	182T	BALL	NONE	H182	182TTDR7101		E6	72.0	4.0/2.0	69	12.72	25
1 1/2	3600	200	143T	BALL	NONE	H603	143TTDR5305		E6	80.0	5.75	26	10.99	5,13
	3600	200	143T	BALL	NONE	E917	143TTDR4005		E2	82.5	5.5	27	10.99	5,13
	3600	208-230/460	56	BALL	NONE	K009 *	56T34D5303		F1	80.0	4.9-5.0/2.5	24	10.44	20
	3600	208-230/460	143T	BALL	NONE	E783 *	143TTDR5313		E2	82.5	4.2-4.2/21	28	10.99	5,13,20
	3600	575	143T	BALL	NONE	E798	143TTDR4006		E2	82.5	1.9	28	10.99	5,13
	1800	200	145T	BALL	NONE	E902 *	145TTDR5632		E2	84.0	5.0	39	12.49	5,13
	1800	200-208	56H	BALL	NONE	K021	-----		F1	80.0	5.5-5.9	29	10.94	5
	1800	200-208	145T	BALL	NONE	H604 *	145TTDR5327		E6	80.0	5.5-5.9	30	10.99	5,13
	1800	200-208	145T	BALL	AUTO	U419 *	145TTDR4128		E2	84.0	5.0-4.9	39	12.49	5,13
	1800	208-230/460	56H	BALL	NONE	K022 *	56T17D5309		F1	80.0	4.8-4.8/2.4	28	10.94	5,20
	1800	208-230/460	56H	BALL	AUTO	G923 *	56T17D5344		F1	80.0	4.8-4.8/2.4	28	10.94	VC,5,20
	1800	208-230/460	56HZ	BALL	AUTO	K064 *	56T17D3302		F1	80.0	4.8-4.8/2.4	30	10.99	Z,5,20
	1800	208-230/460	56HZ	BALL	AUTO	K068 *	56T17D3306		F1	80.0	4.8-4.8/2.4	33	10.99	VC,Z,5,20
	1800	208-230/460	56HZ	BALL	MANUAL	K086	-----		F1	80.0	4.8-4.8/2.4	30	10.99	Z,5,20
	1800	208-230/460	145T	BALL	NONE	E716 *	145TTDR5630		E2	84.0	4.6-4.4/2.2	40	12.49	5,13,20
	1800	208-230/460	145T	BALL	AUTO	U420 *	145TTDR4126		E2	84.0	4.6-4.4-2.2	43	12.49	5,13,20
	1800	208-230/460	145T	BALL	AUTO	U421 *	145TTDR4127		E2	84.0	4.6-4.4/2.2	39	12.49	VC,5,13,20
	1800	575	56H	BALL	NONE	K061 *	56T17D5369		F1	80.0	1.9	28	10.94	5
	1800	575	56HZ	BALL	AUTO	K083	-----		F1	80.0	1.9	30	10.99	Z,5
	1800	575	145T	BALL	NONE	E913 *	145TTDR5640		E2	84.0	1.8	39	12.49	5,13
	1800	575	145T	BALL	AUTO	U923	145TTDR4130		E2	84.0	1.8	39	12.49	5,13
	1200	200	182T	BALL	NONE	E799 *	182TTDR4083		E2	84.0	5.5	102	14.22	13,25
	1200	200	182T	BALL	NONE	H679	182TTDR7095		E6	75.5	5.8	89	12.72	25
	1200	208-230/460	56H	BALL	NONE	K047	-----		F1	78.5	5.45-5.4/2.2	41	11.94	5
	1200	230/460	182T	BALL	NONE	E729 *	182TTDR4076		E2	84.0	4.8/2.4	74	14.22	13,20,25
	900	230/460	184T	BALL	NONE	H183	184TTDR7101		E6	77.0	6.6/3.3	62	14.22	25
2	3600	200	145T	BALL	NONE	H606	-----		E6	80.0	7.1	28	10.99	5,13
	3600	200	145T	BALL	NONE	U905	145TTDR4103		E2	84.0	6.2	29	10.99	5,13
	3600	208-230/460	56H	BALL	NONE	K025 *	56T34D5304		F1	80.0	6.4-6.2/3.1	25	10.44	5,20
	3600	208-230/460	145T	BALL	NONE	E702 *	145TTDR5304		E2	84.0	5.4-5.2/2.6	29	10.99	5,13,20
	3600	575	145T	BALL	NONE	U906	145TTDR4005		E2	84.0	2.2	31	10.99	5,13
	1800	200	145T	BALL	NONE	E903 *	145TTDR5633		E2	84.0	6.7	46	12.99	5,13
	1800	200-208	56HZ	BALL	MANUAL	K087	56T17D3314		F1	81.5	7.1-7.2	36	11.99	Z,5,20
	1800	200-208	145T	BALL	NONE	H607 *	145TTDR5332		E6	81.5	7.1-7.2	37	11.99	5,13
	1800	200-208	145T	BALL	AUTO	U422 *	145TTDR4134		E2	84.0	6.7-6.6	43	12.99	5,13
	1800	208-230/460	56H	BALL	NONE	K041 *	56T17D5310		F1	81.5	6.2-6.2/3.1	34	11.94	5,20
	1800	208-230/460	56HZ	BALL	AUTO	K065 *	56T17D3303		F1	81.5	6.2-6.2/3.1	35	11.99	Z,5,20
	1800	208-230/460	56HZ	BALL	AUTO	K069 *	56T17D3307		F1	81.5	6.2-6.2/3.1	34	11.99	VC,Z,5,20
	1800	208-230/460	56HZ	BALL	MANUAL	K088	-----		F1	81.5	6.2-6.2/3.1	36	11.99	Z,5,20
	1800	208-230/460	145T	BALL	NONE	E717 *	145TTDR5631		E2	84.0	6.2-5.8/2.9	43	12.99	5,13,20
	1800	208-230/460	145T	BALL	AUTO	U423 *	145TTDR4132		E2	84.0	6.2-5.8/2.9	43	12.99	5,13,20
	1800	208-230/460	145T	BALL	AUTO	U424 *	145TTDR4133		E2	84.0	6.2-5.8/2.9	42	12.99	VC,5,13,20
	1800	575	56H	BALL	NONE	K062 *	56T17D5370		F1	81.5	2.5	34	11.94	5
	1800	575	56HZ	BALL	AUTO	K084	-----		F1	81.5	2.5	36	11.99	Z,5
	1800	575	145T	BALL	NONE	E914 *	145TTDR5665		E2	84.0	2.3	42	12.99	5,13

THREE PHASE

★ Stock Model

Catalog numbers (Cat No.) highlighted in bold blue have efficiency levels that meet or exceed U.S. EPA and/or NRC Canadian standards.

Continued on next page.

Footnotes:

- DS Sourced
- VC Voltage Change Device feature for quick voltage changes
- Z 56HZ with 7/8" shaft dia., 3-1/2" shaft height, and slotted 56 frame base
- 5 56H, 143T, and 145T Combination Base with 12 mounting holes

- 13 F1 Mounting Only. Cannot reassemble to F2
- 20 Rated 60/50 hertz, 190/380 or 380 volt at next lower horsepower
- 25 Motor will NOT accept C-Face Kits

General Purpose, Three Phase

Dripproof, Rigid Base

HP	RPM	VOLTS	FRAME	BRGS.	OVER LOAD	CAT. NO.	MODEL NO.		MULT. SYMB.	NOM. EFF.	F.L. AMPS	WGHT. LBS.	"C" DIM.	FOOT NOTES
2	1800	575	145T	BALL	AUTO	U924	145TTDR4136		E2	84.0	2.3	42	12.99	5,13
	1200	200	184T	BALL	NONE	E918 ★	184TTDR4178		E2	85.5	7.1	89	15.22	13,25
	1200	200	184T	BALL	NONE	H697	184TTDR7097		E6	80.0	7.8	78	13.72	13,25
	1200	230/460	184T	BALL	NONE	E730 ★	184TTDR4076		E2	85.5	6.2/3.1	87	15.22	13,20,25
	900	230/460	213T	BALL	NONE	H184	213TTDW7101		E6	80.0	9.0/4.5	130	15.80	
3	3600	200	145T	BALL	NONE	H609	145TTDR5310		E6	84.0	10.0	33	11.49	5,13
	3600	200	145T	BALL	NONE	E919	145TTDR4003		E2	84.0	10.0	33	11.49	5,13
	3600	208-230/460	56H	BALL	NONE	K048	56T34D5340		F1	84.0	8.8-8.2/4.1	32	11.44	5
	3600	208-230/460	145T	BALL	NONE	E784 ★	145TTDR5325		E2	84.0	8.4-7.6/3.8	34	11.49	5,13,20
	3600	575	145T	BALL	NONE	E932	145TTDR4105		E2	84.0	3.5	33	11.49	5,13
	1800	200	182T	BALL	NONE	H610 ★	182TTDR7627		E6	81.5	10.4	68	12.72	25
	1800	200	182T	BALL	NONE	E904 ★	182TTDR4027		E2	86.5	9.9	58	14.22	13,25
	1800	200-208	56HZ	BALL	MANUAL	K089	-----		F1	84.0	9.9/9.7	48	13.49	Z,5,20
	1800	200-208	145T	BALL	NONE	H681	145TTDR5337		E6	84.0	9.9-9.7	48	13.49	5,13
	1800	200-208	182T	BALL	NONE	L102 ★	182TTDR5327		E6	84.0	9.9-9.7	50	14.27	13,25
	1800	200-208	182T	BALL	AUTO	U425 ★	182TTDR4074		E2	86.5	9.9-9.5	72	14.22	13,25
	1800	208-230/460	56HZ	BALL	NONE	H803 ★	56T17D5398		F1	84.0	9.2-8.6/4.3	48	13.49	Z,13,20
	1800	208-230/460	56HZ	BALL	AUTO	K066 ★	56T17D3304		F1	84.0	9.2-8.6/4.3	48	13.49	Z,5,20
	1800	208-230/460	56HZ	BALL	AUTO	K080 ★	56T17D3308		F1	84.0	9.2-8.6/4.3	50	13.49	VC,Z,5,20
	1800	208-230/460	56HZ	BALL	MANUAL	K900	-----		F1	84.0	9.2-8.6/4.3	47	13.49	Z,5,20
	1800	208-230/460	182T	BALL	NONE	E718 ★	182TTDR4026		E2	86.5	8.8-8.2/4.1	81	13.72	DS,13,20,25
	1800	230/460	182T	BALL	AUTO	U426 ★	182TTDR4156		E2	86.5	8.8-8.6/4.3	63	13.72	13,25
	1800	230/460	182T	BALL	AUTO	L105 ★	182TTDR5335		E6	84.0	8.6/4.3	51	14.27	d,13,25
	1800	575	182T	BALL	NONE	E915 ★	182TTDR4030		E2	86.5	3.4	72	14.22	13,25
	1800	575	182T	BALL	AUTO	U925	182TTDR4075		E2	86.5	3.4	78	14.22	13,25
	1200	200	213T	BALL	NONE	U907 ★	213TTDW4078		E2	86.5	9.7	121	17.30	13
	1200	200	213T	BALL	NONE	H698	213TTDW7078		E6	82.5	11.5	105	15.80	
	1200	230/460	213T	BALL	NONE	E731 ★	213TTDW4076		E2	86.5	8.4/4.2	104	17.30	20
900	230/460	215T	BALL	NONE	H185	215TTDW7101		E6	78.5	12.2/6.1	200	17.30		
5	3600	200	182T	BALL	NONE	E933	182TTDR4104		E2	86.5	13.8	56	13.72	13,25
	3600	200	182T	BALL	NONE	L631	182TTDR5302		E6	88.5	14.0	53	14.27	13,25
	3600	200	182T	BALL	NONE	H612 ★	182TTDR7910		E6	82.5	16.0	71	12.72	25
	3600	208-230/460	182T	BALL	NONE	E704 ★	182TTDR4001		E2	86.5	13.6-12.0/6.0	74	13.72	13,20,25
	3600	575	182T	BALL	NONE	U908	182TTDR4106		E2	86.5	4.8	83	13.72	13,25
	1800	200	184T	BALL	NONE	E905 ★	184TTDR4027		E2	87.5	15.2	83	15.22	13,25
	1800	200	184T	BALL	NONE	H613 ★	184TTDR7627		E6	85.5	14.8	68	13.72	13,25
	1800	200-208	184T	BALL	AUTO	U427 ★	184TTDR4153		E2	87.5	15.0/14.4	76	15.22	13,25
	1800	208-230/460	184T	BALL	NONE	E719 ★	184TTDB4026		E2	87.5	14.4-13.0/6.5	89	14.72	d,DS,13,20,25
	1800	208-230/460	184T	BALL	AUTO	U428 ★	184TTDR4166		E2	87.5	14.0-13.0/6.5	79	15.22	13,25
	1800	575	184T	BALL	NONE	E916 ★	184TTDR4030		E2	87.5	5.3	89	15.22	13,25
	1200	200	215T	BALL	NONE	E935 ★	215TTDW4078		E2	87.5	17.0	145	18.55	13
	1200	200	215T	BALL	NONE	H699	215TTDW7078		E6	85.5	17.3	132	17.30	
	1200	230/460	215T	BALL	NONE	E732 ★	215TTDW4076		E2	87.5	14.0/7.0	135	18.55	13,20
	1200	575	215T	BALL	NONE	E936	215TTDW4080		E2	87.5	5.6	154	18.55	13
900	230/460	254T	BALL	NONE	H186	254TTDX7101		E6	82.5	17.0/8.5	156	20.57		
7 1/2	3600	200	184T	BALL	NONE	E937	184TTDR4103		E2	87.5	20.2	68	14.72	13,25
	3600	200	184T	BALL	NONE	H615	184TTDR7625		E6	86.5	20.7	72	13.72	25
	3600	208-230/460	184T	BALL	NONE	E705 ★	184TTDR4001		E2	87.5	20.0-17.6/8.8	70	14.72	13,20,25
	3600	575	184T	BALL	NONE	E938	184TTDR4105		E2	87.5	7.0	78	14.72	13,25

★ Stock Model

Catalog numbers (Cat No.) highlighted in bold blue have efficiency levels that meet or exceed U.S. EPA and/or NRC Canadian standards.

Continued on next page.

Footnotes:

d	To be discontinued after current stock is gone	5	56H, 143T, and 145T Combination Base with 12 mounting holes
DS	Sourced	13	F1 Mounting Only, Cannot reassemble to F2
VC	Voltage Change Device feature for quick voltage changes	20	Rated 60/50 hertz, 190/380 or 380 volt at next lower horsepower
Z	56HZ with 7/8" shaft dia., 3-1/2" shaft height, and slotted 56 frame base	25	Motor will NOT accept C-Face Kits

General Purpose, Three Phase

Dripproof, Rigid Base

HP	RPM	VOLTS	FRAME	BRGS.	OVER LOAD	CAT. NO.	MODEL NO.		MULT. SYMB.	NOM. EFF.	F.L. AMPS	WGHT. LBS.	"C" DIM.	FOOT NOTES
7 1/2	1800	200	213T	BALL	NONE	E906 *	213TTDW4028		E2	88.5	22.1	109	17.30	13
	1800	200	213T	BALL	NONE	H616 *	213TTDW7028		E6	84.0	24.8	90	15.80	
	1800	200-208	213T	BALL	AUTO	U429	213TTDW4070		E2	88.5	22.1-21.2	118	17.30	13
	1800	208-230/460	213T	BALL	NONE	E720 *	213TTDB4026		E2	88.5	21.4-19.6/9.8	125	17.30	DS,13,25
	1800	208-230/460	213T	BALL	AUTO	U430 *	213TTDW4054		E2	88.5	20.0-19.2/9.6	123	18.05	13,20
	1800	575	213T	BALL	NONE	E758 *	213TTDW4030		E2	88.5	7.7	113	17.30	13
	1800	575	213T	BALL	AUTO	U926	213TTDW4071		E2	88.5	7.7	118	17.30	13
	1200	230/460	254T	BALL	NONE	E733 *	254TTDX4076		E2	88.5	21.4/10.7	150	20.57	20
	900	230/460	256T	BALL	NONE	H187	256TTDX7101		E6	84.0	26.0/13.0	148	22.32	
10	3600	200	213T	BALL	NONE	E939	213TTDW4003		E2	88.5	26.9	120	17.30	13
	3600	200	213T	BALL	NONE	H618	213TTDW7003		E6	85.5	28.8	150	15.80	
	3600	208-230/460	213T	BALL	NONE	E706 *	213TTDW4001		E2	88.5	25.9-23.4/13.3	111	17.30	13
	1800	200	215T	BALL	NONE	E907 *	215TTDW4028		E2	89.5	28.8	125	17.30	13
	1800	200	215T	BALL	NONE	H619 *	215TTDW7028		E6	87.5	30.4	102	17.30	
	1800	208-230/460	215T	BALL	NONE	E721 *	215TTDA4026		E2	89.5	28.6-26.4/13.2	136	17.30	DS,13,25
	1800	460	215T	BALL	AUTO	U431	-----		E2	89.5	12.5	138	18.04	13
	1800	575	215T	BALL	NONE	E759 *	215TTDW4030		E2	89.5	10.0	123	17.30	13
	1200	230/460	256T	BALL	NONE	E734 *	256TTDX4076		E2	90.2	28.0/14.0	221	22.32	
	900	230/460	284T	BALL	NONE	H188	284TTDP7101		E6	85.5	32.0/16.0	310	23.49	
15	3600	200	215T	BALL	NONE	H621 *	215TTDW7003		E6	86.5	43.7	132	17.30	
	3600	200	215T	BALL	NONE	E788	215TTDW4003		E2	90.2	39.1	120	18.55	13
	3600	208-230/460	215T	BALL	NONE	E707 *	215TTDW4001		E2	90.2	37.6-34.0/17.0	120	18.55	13,20
	1800	200	254T	BALL	NONE	E908 *	254TTDX4028		E2	91.0	44.2	198	22.32	
	1800	200	254T	BALL	NONE	H622 *	254TTDX7028		E6	87.5	45.1	142	20.57	
	1800	208-230/460	254T	BALL	NONE	E722 *	254TTDC4026		E2	91.0	42.0-39.0/19.5	248	20.56	DS,20
	1800	575	254T	BALL	NONE	E760 *	254TTDX4030		E2	91.0	15.4	184	22.32	
	1200	230/460	284T	BALL	NONE	E735 *	284TTDP4076		E2	90.2	39.0/19.5	328	23.49	
	900	230/460	286T	BALL	NONE	H189	286TTDP7101		E6	86.5	45.0/22.5	341	24.94	
20	3600	200	254T	BALL	NONE	U900	254TTDX4018		E2	91.0	53.1	161	20.57	
	3600	200	254T	BALL	NONE	H624 *	254TTDX7003		E6	88.5	54.0	145	20.57	
	3600	208-230/460	254T	BALL	NONE	E708 *	254TTDX4001		E2	91.0	51.1-46.2/23.1	164	20.57	20
	1800	200	256T	BALL	NONE	H625 *	256TTDX7358		E6	88.5	60.7	200	22.32	
	1800	200	256T	BALL	NONE	E909 *	256TTDX4027		E2	91.0	60.0	236	22.32	
	1800	208-230/460	256T	BALL	NONE	E723 *	256TTDC4026		E2	91.0	50.0/25.0	282	22.31	DS,20
	1800	575	256T	BALL	NONE	E761 *	256TTDX4032		E2	91.0	20.8	189	22.32	
	1200	230/460	286T	BALL	NONE	E736 *	286TTDP4076		E2	91.0	53.0/26.5	483	24.99	
	900	230/460	324T	BALL	NONE	H190	-----		E6	86.5	60.0/30.0	420	26.00	
25	3600	200	256T	BALL	NONE	H627 *	256TTDX7024		E6	89.5	70.0	250	22.32	
	3600	200	256T	BALL	NONE	E786 *	256TTDX4013		E2	91.0	66.7	200	22.32	
	3600	208-230/460	256T	BALL	NONE	E709 *	256TTDX4001		E2	91.0	64.1-58.0/29.0	175	22.32	20
	1800	200	284T	BALL	NONE	E910 *	284TTDP4029		E2	91.7	70.0	350	23.49	
	1800	200	284T	BALL	NONE	H628 *	284TTDP7644		E6	88.5	76.0	340	23.49	
	1800	200	284TS	BALL	NONE	H629	-----		E6	88.5	75.9	274	22.06	
	1800	208-230/460	284T	BALL	NONE	E724 *	284TTDC4026		E2	93.0	66.0-60.0/30.0	270	23.49	DS,20

Blue shaded areas are Cast Iron Frames

* **Stock Model**

Catalog numbers (Cat No.) highlighted in bold blue have efficiency levels that meet or exceed U.S. EPA and/or NRC Canadian standards.

Continued on next page.

Footnotes:

DS Sourced

13 F1 Mounting Only, Cannot reassemble to F2

20 Rated 60/50 hertz, 190/380 or 380 volt at next lower horsepower

25 Motor will NOT accept C-Face Kits

General Purpose, Three Phase

Drip-proof, Rigid Base

HP	RPM	VOLTS	FRAME	BRGS.	OVER LOAD	CAT. NO.	MODEL NO.		MULT. SYMB.	NOM. EFF.	F.L. AMPS	WGHT. LBS.	"C" DIM.	FOOT NOTES
25	1800	230/460	284TS	BALL	NONE	E793	284TSTDP4036		E2	91.7	61.0/30.5	330	22.06	20
	1800	575	284T	BALL	NONE	E762 *	284TTDP4035		E2	91.7	24.4	351	23.49	
	1200	230/460	324T	BALL	NONE	E737 *	324TTDP4076		E2	91.7	66.0/33.0	480	26.00	20
	900	230/460	326T	BALL	NONE	H191	326TTDP7101		E6	88.5	88.5	520	27.50	
30	3600	200	284TS	BALL	NONE	U901	284TSTDP4004		E2	91.0	83.0	320	22.06	
	3600	200	284TS	BALL	NONE	H631 *	284TSTDP7025		E6	88.5	84.0	320	22.06	
	3600	230/460	284TS	BALL	NONE	E710 *	284TSTDP4001		E2	91.0	72.0/36.0	286	22.06	20
	1800	200	286T	BALL	NONE	E911 *	286TTDP4027		E2	92.4	83.0	350	24.99	
	1800	200	286T	BALL	NONE	H632 *	286TTDP7641		E6	89.5	91.0	289	24.99	
	1800	200	286TS	BALL	NONE	H633	-----		E6	89.5	91.0	314	23.56	
	1800	208-230/460	286T	BALL	NONE	E725 *	286TTDC4026		E2	92.4	80.0-70.0/35.0	411	24.99	DS,20
	1800	230/460	286TS	BALL	NONE	E794	286TSTDP4038		E2	92.4	72.0/36.0	255	23.56	20
	1800	575	286T	BALL	NONE	E763 *	286TTDP4034		E2	92.4	28.8	285	24.99	
	1200	230/460	326T	BALL	NONE	E738 *	326TTDP4076		E2	92.4	82.0/41.0	634	27.50	
40	3600	200	286TS	BALL	NONE	U902	286TSTDP4017		E2	91.7	108	460	23.56	
	3600	200	286TS	BALL	NONE	H635	286TSTDP7025		E6	88.5	115	340	23.56	
	3600	230/460	286TS	BALL	NONE	E711 *	286TSTDP4001		E2	91.7	94.0/47.0	321	23.56	20
	1800	200	324T	BALL	NONE	E787	324TTDP4030		E2	93.0	112	542	26.00	
	1800	200	324T	BALL	NONE	H636 *	324TTDP7649		E6	89.5	122	521	26.00	
	1800	200	324TS	BALL	NONE	H637	-----		E6	89.5	122	366	24.50	
	1800	230/460	324T	BALL	NONE	E726 *	324TTDC4026		E2	93.0	93.0/46.5	336	26.00	DS,20
	1800	230/460	324TS	BALL	NONE	E789 *	324TSTDP4032		E2	93.0	97.0/48.5	340	24.50	
	1800	575	324T	BALL	NONE	E764 *	324TTDP4028		E2	93.0	39.0	474	26.00	
	1200	230/460	364T	BALL	NONE	E746 *	364TTDS4086		E2	93.0	104/52.0	688	28.62	
50	3600	200	324TS	BALL	NONE	H639	324TSTDP7017		E6	89.5	143	568	24.50	
	3600	200	324TS	BALL	NONE	U909	324TSTDP4006		E2	92.4	135	385	24.50	
	3600	230/460	324TS	BALL	NONE	E712 *	324TSTDP4001		E2	92.4	117/58.5	437	24.50	20
	1800	200	326T	BALL	NONE	H640 *	326TTDP7626		E6	90.2	150	460	27.50	
	1800	200	326T	BALL	NONE	E790	326TTDP4046		E2	93.0	142	820	27.50	
	1800	200	326TS	BALL	NONE	H641	-----		E6	90.2	150	405	26.00	
	1800	230/460	326T	BALL	NONE	E727 *	326TTDC4026		E2	93.0	118/59.0	510	27.50	DS,20
	1800	230/460	326TS	BALL	NONE	E791 *	326TSTDP4036		E2	93.0	123/61.5	340	26.00	20
	1800	575	326T	BALL	NONE	E765 *	326TTDP4048		E2	93.0	49.2	510	27.50	
	1200	230/460	365T	BALL	NONE	E747 *	365TTDS4086		E2	93.0	124/62.0	743	29.62	20
60	3600	200	326TS	BALL	NONE	U910	326TSTDP4003		E2	93.0	155	398	26.00	
	3600	200	326TS	BALL	NONE	H643	-----		E6	90.2	167	469	26.00	
	3600	230/460	326TS	BALL	NONE	E713 *	326TSTDP4001		E2	93.0	135/67.5	454	26.00	20
	1800	230/460	364T	BALL	NONE	E739 *	364TTDC4036		E2	93.6	142/71.0	751	28.62	DS
	1800	230/460	364TS	BALL	NONE	E768 *	364TSTDC4026		E2	93.6	142/71.0	750	26.50	DS,20
	1800	575	364T	BALL	NONE	E766	364TTDS4040		E2	93.6	58.0	699	28.62	
	1200	230/460	404T	BALL	NONE	E748 *	404TTDS4086		E2	93.6	143/72.0	1135	32.50	20
75	3600	230/460	364TS	BALL	NONE	E714 *	364TSTDS4001		E2	93.0	183/92.0	710	26.50	20
	1800	230/460	365T	BALL	NONE	E740 *	365TTDC4036		E2	94.1	176/88.0	820	29.62	DS,20
	1800	230/460	365TS	BALL	NONE	E782 *	365TSTDC4026		E2	94.1	176/88.0	779	27.5	DS,20
	1800	575	365T	BALL	NONE	E767	365TTDS4041		E2	94.1	71.0	730	29.62	
	1200	230/460	405T	BALL	NONE	E749	405TTDS4086		E2	93.6	176/88.0	1033	34.00	20

Blue shaded areas are Cast Iron Frames

* Stock Model

Catalog numbers (Cat No.) highlighted in bold blue have efficiency levels that meet or exceed U.S. EPA and/or NRC Canadian standards.

Continued on next page.

Footnotes:

DS Sourced
20 Rated 60/50 hertz, 190/380 or 380 volt at next lower horsepower

General Purpose, Three Phase

Dripproof, Rigid Base

HP	RPM	VOLTS	FRAME	BRGS.	OVER LOAD	CAT. NO.	MODEL NO.		MULT. SYMB.	NOM. EFF.	F.L. AMPS	WGHT. LBS.	"C" DIM.	FOOT NOTES
100	3600	230/460	365TS	BALL	NONE	E753 *	365TSTDS4001		E2	93.0	240/120	736	27.50	20
	1800	230/460	404T	BALL	NONE	E741 *	404TTDS4036		E2	94.1	236/118	1040	32.50	20
	1800	230/460	404TS	BALL	NONE	E780 *	404TSTDS4026		E2	94.1	236/118	1013	29.50	20
	1800	575	404T	BALL	NONE	U903	404TTDS4042		E2	94.1	94.5	1004	32.50	
	1200	230/460	444T	BALL	NONE	E750	444TTDS4086		E2	94.1	236/118	1450	37.75	
125	3600	460	404TS	BALL	NONE	E754 *	404TSTDS4001		E2	93.6	142	975	29.50	PW
	1800	460	405T	BALL	NONE	E742 *	405TTDS4036		E2	94.5	147	1112	34.00	PW
	1800	460	405TS	BALL	NONE	E781 *	405TSTDS4026		E2	94.5	147	1068	31.00	PW
	1800	575	405T	BALL	NONE	U904	405TTDS4049		E2	94.5	117.6	1083	34.00	
	1200	460	445T	BALL	NONE	E795	445TTDS4086		E2	94.5	147	1436	39.75	
150	3600	460	405TS	BALL	NONE	E755 *	405TSTDS4001		E2	93.6	169	1028	31.00	PW
	1800	460	444T	BALL	NONE	E743 *	444TTDS4036		E2	95.0	176	1335	37.75	PW
	1800	460	444TS	BALL	NONE	E792 *	444TSTDS4026		E2	95.0	176	1276	34.00	PW
	1800	575	444T	BALL	NONE	U911	-----		E2	95.0	141	1335	37.75	
	1200	460	445T	ROLLER	NONE	E796	445TTDS4098		E2	94.5	180	1491	39.75	RB
200	3600	460	444TS	BALL	NONE	E756 *	444TSTDS4001		E2	94.5	225	1338	34.00	PW
	1800	460	445TS	BALL	NONE	U400 *	445TSTDS4026		E2	95.0	233	1405	36.00	PW
	1800	460	445T	ROLLER	NONE	E744 *	445TTDS4036		E2	95.0	233	1450	39.75	PW, RB
	1800	575	445T	BALL	NONE	U912	445TTDS4070		E2	95.0	186	1447	39.75	
	1200	460	447T	ROLLER	NONE	E797	447TTDN4089		E2	94.5	240	2151	43.25	F,25, RB
250	3600	460	445TS	BALL	NONE	H119	445TSTDS7001		E6	93.6	275	1445	36.00	
	3600	460	445TS	BALL	NONE	E757	445TSTDS4001		E2	94.5	279	1406	36.00	PW,20
	1800	460	445T	ROLLER	NONE	E745	445TTDS4037		E2	95.4	287	1561	39.75	PW, RB
	1800	460	445T	ROLLER	NONE	H149 *	445TTDS7372		E6	95.0	287	1410	39.75	RB
	1800	460	445TS	BALL	NONE	H192	445TSTDS7362		E6	95.0	287	1465	36.00	
	1200	460	447T	ROLLER	NONE	H822	447TTDN7087		E6	94.5	300	2245	43.25	F, RB, YD, 25
300	3600	460	447TS	BALL	NONE	H178 *	447TSTDN7001		E6	94.5	335	2255	39.50	F, YD, 25
	1800	460	447TS	BALL	NONE	H812 *	447TSTDN7026		E6	95.4	345	1952	39.50	F, YD, 25
	1200	460	449T	BALL	TSTAT	H820	449TTDN7086		E6	95.4	357	2632	48.25	F, YD, 25
350	3600	460	447TS	BALL	NONE	H193 *	447TSTDN7003		E6	95.4	385	2068	39.50	F, YD, 25
	1800	460	447TS	BALL	NONE	H813 *	447TSTDN7027		E6	95.8	405	2064	39.50	F, YD, 25
	1200	460	449T	BALL	TSTAT	H821	449TTDN7087		E6	95.0	412	2830	48.25	F, YD, 25
400	3600	460	447TS	BALL	NONE	H817 *	447TSTDN7005		E6	95.4	440	2150	39.50	F, YD, 25
	1800	460	447TS	BALL	NONE	H814 *	447TSTDN7028		E6	95.8	460	2214	39.50	F, YD, 25
450	3600	460	449TS	BALL	TSTAT	H818 *	449TSTDN7001		E6	95.8	495	2544	44.50	F, YD, 25
	1800	460	449TS	BALL	TSTAT	H815	449TSTDN7026		E6	95.4	510	2554	44.50	F, YD, 25
500	3600	460	449TS	BALL	TSTAT	H819 *	449TSTDN7003		E6	95.8	545	2542	44.50	F, YD, 25
	1800	460	449TS	BALL	TSTAT	H816	449TSTDN7027		E6	95.8	560	2695	44.50	F, YD, 25

Blue shaded areas are Cast Iron Frames

* **Stock Model**

Catalog numbers (Cat No.) highlighted in bold blue have efficiency levels that meet or exceed U.S. EPA and/or NRC Canadian standards.

Footnotes:

F Class F Insulation
 PW Part Winding Start Capability
 RB Roller Bearing on shaft end for belted loads only

YD 12 Leads for WYE-DELTA, Part Winding on low voltage, or across-the-line starting
 20 Rated 60/50 hertz, 190/380 or 380 volt at next lower horsepower
 25 Motor will NOT accept C-Face Kits

General Purpose, Three Phase

Dripproof, F-2 Mount, Rigid Base



Applications: General purpose use on compressors, pumps, conveyors, fans, blowers, and other machinery requiring NEMA F-2 conduit box orientation. Intended for use in environments that are relatively clean and dry. For use outdoors an enclosure or drip cover may be required (see Accessories section).

- Features:**
- Ball bearings
 - NEMA Service factors
 - Will accept C-Face Kits except where noted, see Accessories Section
 - UL Recognized and CSA Certified



Suitable for use on VFD per guidelines on page 13.

HP	RPM	VOLTS	FRAME	CAT. NO.	MODEL NO.		MULT. SYMB.	NOM. EFF.	F.L. AMPS	WGHT. LBS.	"C" DIM.	FOOT NOTES
1	1800	200	143T	U913	143TTDR4029		E2	82.5	3.6	40	12.49	5
	1800	230/460	143T	U406	143TTDR4027		E2	82.5	3.1/1.55	40	12.49	5,20
1 1/2	1800	200	145T	U914	-----		E2	84.0	5.0	44	12.49	5
	1800	230/460	145T	U921	145TTDR4053		E2	84.0	4.4/2.2	44	12.49	5,20
2	1800	200	145T	U915	-----		E2	84.0	6.7	44	12.99	5
	1800	230/460	145T	U408	145TTDR4027		E2	84.0	5.8/2.9	44	12.99	5,20
3	1800	200	182T	U916	182TTDR4129		E2	86.5	9.9	83	14.21	25
	1800	230/460	182T	U409	182TTDR4127		E2	86.5	8.6/4.3	83	14.21	20,25
5	1800	200	184T	U917	-----		E2	87.5	14.5	89	15.21	25
	1800	230/460	184T	U410	-----		E2	87.5	12.4/6.2	89	15.21	20,25
7 1/2	1800	200	213T	U918*	213TTDW4029		E2	88.5	22.1	113	17.30	d
	1800	208-230/460	213T	U411	213TTDW4027		E2	88.5	21.0-19.2/9.6	113	17.30	20
10	1800	200	215T	U919	-----		E2	89.5	28.8	123	18.54	
	1800	230/460	215T	U412	-----		E2	89.5	25.0/12.5	123	18.54	20
15	1800	200	254T	U920	-----		E2	91.0	44.2	200	22.32	
	1800	208-230/460	254T	U413	254TTDX4027		E2	91.0	42.0-38.4/19.2	215	22.32	20
20	1800	230/460	256T	U414	-----		E2	91.0	52.0/26.0	233	22.32	20
25	1800	230/460	284T	U415	284TTDP4051		E2	91.7	61.0/30.5	346	23.49	20

Blue shaded areas are Cast Iron Frames

THREE PHASE

General Purpose, Three Phase

Dripproof, C-Face



Applications: General purpose use on gear reducers, pumps, machine tools, and other direct-coupled equipment installed in environments that are relatively clean and dry. For use outdoors an enclosure or drip cover may be required (see Accessories section).

- Features:**
- Ball bearings, mechanically locked on shaft end
 - NEMA Service factors
 - UL Recognized and CSA Certified



Suitable for use on VFD per guidelines on page 13.

HP	RPM	VOLTS	FRAME	CAT. NO.	MODEL NO.		MULT. SYMB.	NOM. EFF.	F.L. AMPS	WGHT. LBS.	"C" DIM.	FOOT NOTES
1/4	1800	208-230/460	56C	G245	56T17D2105		F1	66.0	1.2-1.3/0.6	22	9.55	20
	1200	208-230/460	56C	G246	-----		F1	52.5	1.7-2.0/1.0	17	10.44	20
1/3	3600	208-230/460	56C	G240*	56T34D5325		F1	65.0	1.7-1.8/0.9	19	10.44	20
	1800	208-230/460	56C	G201*	56T17D2106		F1	68.0	1.5-1.6/0.8	15	9.80	20
	1200	208-230/460	56C	G247	-----		F1	62.0	1.9-2.2/1.1	18	10.44	20

Footnotes:

- d To be discontinued after current stock is gone
- 5 56H, 143T, and 145T Combination Base with 12 mounting holes
- 20 Rated 60/50 hertz, 190/380 or 380 volt at next lower horsepower
- 25 Motor will NOT accept C-Face kit

* Stock Model

Catalog numbers (Cat No.) highlighted in bold blue have efficiency levels that meet or exceed U.S. EPA and/or NRC Canadian standards.

Continued on next page.

General Purpose, Three Phase

Dripproof, C-Face

HP	RPM	VOLTS	FRAME	CAT. NO.	MODEL NO.		MULT. SYMB.	NOM. EFF.	F.L. AMPS	WGHT. LBS.	"C" DIM.	FOOT NOTES
1/2	3600	208-230/460	56C	G241★	56T34D5326		F1	68.0	2.1-2.2/1.1	19	10.44	20
	1800	208-230/460	56C	G203★	56T17D2107		F1	68.0	2.1-2.2/1.1	17	10.30	20
	1800	575	56C	G242★	56T17D2115		F1	68.0	0.9	17	10.30	
	1200	208-230/460	56C	G248	56T11D5311		F1	68.0	2.4-2.7/1.3	21	10.44	20
3/4	3600	208-230/460	56C	G205★	56T34D5327		F1	74.0	3.0-3.2/1.6	20	10.44	20
	1800	208-230/460	56C	G207★	56T17D2108		F1	75.5	2.7-2.8/1.4	20	10.80	20
	1800	575	56C	G243★	56T17D2116		F1	75.5	1.1	19	10.80	
	1200	208-230/460	56C	G249	-----		F1	74.0	3.1-3.2/1.6	25	10.94	20
	1200	208-230/460	143TC	C111	143TTDR5378		E6	74.0	3.1-3.2/1.6	25	10.94	20
1	3600	208-230/460	56C	G209★	56T34D5328		F1	75.5	3.7-3.7/1.8	22	10.44	20
	1800	208-230/460	56C	G221★	56T17D2109		F1	77.0	3.4-3.4/1.7	22	11.30	20
	1800	208-230/460	143TC	C120★	143TTDR5331		E6	77.0	3.5-3.6/1.8	27	10.99	20
	1800	575	56C	G244★	56T17D2127		F1	77.0	1.4	23	11.30	
	1200	208-230/460	56C	G287	-----		F1	75.5	4.1-4.2/2.1	31	10.94	20
	1200	208-230/460	145TC	C150	145TTDR5377		E6	75.5	4.1-4.2/2.1	31	11.49	20
1 1/2	3600	208-230/460	56C	G223★	56T34D5329		F1	80.0	4.9-5.0/2.5	23	10.44	20
	3600	208-230/460	143TC	C101	-----		E6	80.0	4.9-5.0/2.5	26	10.94	20
	1800	208-230/460	56C	G225★	56T17D5318		F1	80.0	4.8-4.8/2.4	27	10.94	20
	1800	208-230/460	145TC	C121★	145TTDR5340		E6	80.0	4.8-4.8/2.4	29	10.99	20
	1200	208-230/460	56C	G288	-----		F1	78.5	5.45-5.4/2	40	10.94	20
	1200	208-230/460	145TC	C162	145TTDR5384		E6	78.5	5.45-5.4/2.2	40	12.49	20
	1200	230/460	182TC	C151	-----		E6	75.5	5.0/2.5	58	13.46	20
2	3600	208-230/460	56C	G227★	56T34D5330		F1	80.0	6.4-6.2/3.1	25	10.44	20
	3600	208-230/460	145TC	C102	145TTDR5311		E6	80.0	6.4-6.2/3.1	29	10.49	20
	1800	208-230/460	56C	G229★	56T17D5319		F1	81.5	6.2-6.2/3.1	33	11.94	20
	1800	208-230/460	145TC	C122★	145TTDR5341		E6	81.5	6.2-6.2/3.1	35	11.99	20
	1200	230/460	184TC	C152	184TTDR7379		E6	80.0	6.8/3.4	75	14.47	20
3	3600	208-230/460	56C	G289★	56T34D5339		F1	84.0	8.9-8.4/4.2	31	11.44	20
	3600	208-230/460	145TC	C103★	145TTDR5312		E6	84.0	8.9-8.4/4.2	33	11.49	20
	1800	208-230/460	145TC	C163	145TTDR5646		E6	84.0	9.2-8.6/4.3	49	13.49	20
	1800	208-230/460	182TC	C123★	182TTDR8067		E6	81.5	9.4-9.0/4.5	63	14.28	20
1200	230/460	213TC	C153	-----		E6	82.5	10.0/5.0	99	16.53	20	
5	3600	208-230/460	182TC	C104★	182TTDR8204		E6	82.5	14.0-14.0/7	62	14.28	20
	1800	208-230/460	184TC	C124★	184TTDR8329		E6	85.5	13.8-13.2/6	84	15.28	20
	1200	230/460	215TC	C154	-----		E6	85.5	15.0/7.5	100	18.03	20
7 1/2	3600	208-230/460	184TC	C105★	184TTDR9308		E6	86.5	20.0-18.0/9	83	15.28	20
	1800	208-230/460	213TC	C125	213TTDW7046		E6	84.0	22.0-21.6/10.8	95	16.53	20
	1200	208-230/460	254TC	C155	254TTDX7090		E6	81.5	23.0-22.2/11.1	180	21.00	20
10	3600	208-230/460	213TC	C106★	213TTDW7021		E6	85.5	28.0-25.0/12.5	95	16.53	20
	1800	208-230/460	215TC	C126	215TTDW7046		E6	87.5	29.2-26.4/13.2	128	18.03	20
	1200	230/460	256TC	C156	256TTDX7396		E6	87.5	27.6/13.8	189	23.38	20

★ Stock Model

Footnotes:

20 Rated 60/50 hertz, 190/380 or 380 volt at next lower horsepower

Prices and Specifications are subject to change without notice.

General Purpose, Three Phase

Dripproof, C-Face With Rigid Base



Applications: General purpose use on gear reducers, pumps, machine tools, and other direct coupled equipment installed in environments that are relatively clean and dry. For use outdoors an enclosure or drip cover may be required (see Accessories section).

- Features:**
- Ball bearings, mechanically locked on shaft end
 - NEMA Service factors
 - UL Recognized and CSA Certified



Suitable for use on VFD per guidelines on page 13.

HP	RPM	VOLTS	FRAME	CAT. NO.	MODEL NO.		MULT. SYMB.	NOM. EFF.	F.L. AMPS	WGHT. LBS.	"C" DIM.	FOOT NOTES
3	3600	230/460	145TC	U401	-----		E2	84.0	8.4/4.2	41	11.44	20
5	3600	208-230/460	182TC	U402 *	182TTDR4108		E2	86.5	13.4-12.0/6.0	83	14.46	20
	1800	230/460	184TC	U403	184TTDR4132		E2	87.5	13.2/6.6	93	14.96	13,20
7 1/2	3600	230/460	184TC	U404 *	184TTDR4107		E2	87.5	20.0-17.6/8.8	105	15.46	13,20
	1800	230/460	213TC	U405 *	213TTDW4045		E2	88.5	19.2/9.6	115	18.03	20
10	3600	230/460	213TC	U432 *	213TTDW4315		E2	88.5	23.4/11.7	138	18.03	YD,13,20
	1800	208-230/460	215TC	U433 *	215TTDW4335		E2	89.5	27.6-25.0/12.5	138	18.03	YD,13,20
15	3600	230/460	215TC	U435 *	215TTDW4315		E2	90.2	34.0/17.0	135	19.28	YD,13,20
	1800	208-230/460	254TC	U436 *	254TTDX4065		E2	91.0	42.0-38.4/19.2	215	22.64	YD,20
20	3600	230/460	254TC	U437 *	254TTDX4315		E2	91.0	46.2/23.1	161	20.89	YD,20
	1800	208-230/460	256TC	U438 *	256TTDX4345		E2	91.0	55.0-52.0/26.0	233	22.64	A,YD,20
25	3600	230/460	256TC	U439 *	256TTDX4315		E2	91.0	58.0/29.0	200	22.64	YD,20
	1800	230/460	284TSC	U440	284TSTDP4062		E2	91.7	61.0/30.5	346	22.06	YD,20
30	3600	230/460	284TSC	U441 *	284TSTDP4306		E2	91.0	72.0/36.0	318	22.06	YD,20
	1800	230/460	286TSC	U442	286TSTDP4328		E2	92.4	72.0/36.0	354	23.56	YD,20
40	3600	230/460	286TSC	U443 *	286TSTDP4310		E2	91.7	94.0/47.0	354	23.56	YD,20
	1800	230/460	324TSC	U444	324TSTDP4070		E2	93.0	97.0/48.5	401	24.50	YD,20
50	3600	230/460	324TSC	U445 *	324TSTDP4016		E2	92.4	117/58.5	437	24.50	YD,20
	1800	230/460	326TSC	U446	326TSTDP4055		E2	93.0	119/59.5	427	26.00	YD,20
60	3600	230/460	326TSC	U447 *	326TSTDP4310		E2	93.0	136/68.0	462	26.00	YD,20
	1800	230/460	364TSC	U448	364TSTDS4355		E2	93.6	144/72	688	26.50	YD,20
75	3600	230/460	364TSC	U449 *	364TSTDS4313		E2	93.0	183/91.5	710	26.50	YD,20
	1800	230/460	365TSC	U450	365TSTDS4634		E2	94.1	178/89.0	786	27.50	YD,20
100	3600	230/460	365TSC	U451 *	365TSTDS4324		E2	93.0	240/120	773	27.50	YD,20
	1800	230/460	404TSC	U452	404TSTDS4364		E2	94.1	236/118	1013	29.50	YD,20
125	3600	460	404TSC	U453 *	404TSTDS4308		E2	93.6	142	975	29.50	YD,20
	1800	460	405TSC	U454	-----		E2	94.5	147	1068	31.00	YD,20
150	3600	460	405TSC	U455 *	405TSTDS4302		E2	93.6	169	1028	31.00	YD,20
	1800	460	444TSC	U456	444TSTDS4056		E2	95.0	176	1335	34.00	YD,13,20

Blue shaded areas are Cast Iron Frames

★ Stock Model

Catalog numbers (Cat No.) highlighted in bold blue have efficiency levels that meet or exceed U.S. EPAact and/or NRCAN Canadian standards.

Footnotes:

- A NEMA Design A
- YD 12 Leads for WYE-DELTA, Part Winding on low voltage, or across-the-line starting
- 13 F1 Mounting Only, Cannot reassemble to F2
- 20 Rated 60/50 hertz, 190/380 or 380 volt at next lower horsepower

General Purpose, Three Phase

Totally Enclosed, Rigid Base

Applications: General purpose use on pumps, fans, blowers, compressors, conveyors, and other industrial machinery installed in damp, dusty, or dirty environments. Additionally, cast iron frame motors may be suitable for the process industries.

- Features:**
- Ball bearings (Roller bearings, where footnote "RB")
 - 1.15 Service factor
 - Items with footnote 20 are nameplated 60/50 hertz at next lowest horsepower
 - Will accept C-Face Kits except where noted, see Accessories section
 - Severe duty kits available for cast iron frame motors, see Accessories section
 - Cast iron motors feature shaft slinger, regreasable bearings (182T and larger), lead lugs (364T and larger), and bearing caps on 444T and larger
 - UL Recognized and CSA Certified



Suitable for use on VFD per guidelines on page 13.

HP	RPM	VOLTS	FRAME	BRGS.	CAT. NO.	MODEL NO.	MULT. SYMB.	NOM. EFF.	F.L. AMPS	WGHT. LBS.	"C" DIM.	FOOT NOTES
1/4	1800	208-230/460	48	BALL	K420	48T17F2000	F1	62.5	1.2-1.3/65	14	9.59	20,25
	1200	208-230/460	56	BALL	G301*	56T11F5300	F1	52.5	1.7-2.0/1.0	20	11.32	20
1/3	3600	208-230/460	56	BALL	G307	-----	F1	64.0	1.7-2.0/1.0	17	9.94	N,20
	1800	208-230/460	48	BALL	K421	-----	F1	65.5	1.5-1.6/8	20	9.59	25
	1800	208-230/460	56	BALL	G303*	56T17F2034	F1	65.5	1.5-1.6/8	16	10.22	20,25
	1800	575	56	BALL	G304*	56T17F2043	F1	65.5	0.64	17	10.22	25
	1200	208-230/460	56	BALL	G306*	56T11F5301	F1	62.0	1.9-2.2/1.1	22	11.32	20,25
1/2	3600	208-230/460	56	BALL	G308*	56T34F5328	F1	66.0	2.1/2.2/1.1	22	11.82	20
	3600	575	56	BALL	G309*	56T34F5333	F1	66.0	0.9	26	11.82	
	1800	208-230/460	48	BALL	K422	-----	F1	70.0	2.1-2.2/1.1	23	9.84	25
	1800	208-230/460	56	BALL	G321*	56T17F2035	F1	70.0	2.1-2.2/1.1	18	10.72	20,25
	1800	575	56	BALL	G322*	56T17F2044	F1	70.0	0.9	18	10.72	25
	1200	208-230/460	56	BALL	G324*	56T11F5302	F1	68.0	2.4-2.7/1.35	24	11.82	20
3/4	3600	208-230/460	56	BALL	G326*	56T34F5329	F1	74.0	3.0-3.2/1.6	24	11.82	20
	3600	575	56	BALL	G327*	56T34F5334	F1	74.0	1.3	23	11.82	
	1800	200-208	56	BALL	G328	56T17F2045	F1	75.5	3.2/3.3	21	11.22	25
	1800	208-230/460	48	BALL	K423	-----	F1	75.5	2.7-2.8/1.4	25	9.84	25
	1800	208-230/460	56	BALL	G329*	56T17F2037	F1	75.5	2.7-2.8/1.4	22	11.22	20,25
	1800	575	56	BALL	G340*	56T17F2046	F1	75.5	1.1	22	11.22	25
	1200	208-230/460	56	BALL	G342*	56T11F5303	F1	74.0	3.1-3.2/1.6	28	12.32	20
	1200	208-230/460	143T	BALL	H700*	143TTFR5376	E6	74.0	3.1-3.2/1.6	28	12.37	20
	1200	208-230/460	143T	BALL	H457*	143TTFN8076	E6	74.0	3.1-3.2/1.6	46	12.04	20
	1200	230/460	143T	BALL	E348	143TTTN6076	E9	80.0	2.8/1.4	52	10.43	N,X,20
1	3600	208-230/460	56	BALL	G344*	56T34F5330	F1	74.0	3.7-3.7/1.8	34	11.82	20
	3600	575	56	BALL	G345*	56T34F5335	F1	74.0	1.5	24	11.82	
	1800	200	143T	BALL	E825	143TTTN4028	E1	82.5	3.7	53	10.43	N
	1800	200	143T	BALL	E824	143TTFR4028	E8	82.5	3.5	32	12.87	
	1800	200-208	143T	BALL	H664*	143TTFR5327	E6	77.0	4.15-4.3	29	12.37	
	1800	208-230/460	56	BALL	G347*	56T17F5302	F1	77.0	3.5-3.6/1.8	27	12.32	20
	1800	208-230/460	143T	BALL	E950 *	143TTFR4026	E8	82.5	3.2-3.0/1.5	38	12.87	20
	1800	230/460	143T	BALL	E349 *	143TTTN6026	E9	85.5	3.0/1.5	53	10.43	N,X,20
	1800	208-230/460	143T	BALL	E826 *	143TTTC4026	E1	85.5	3.2-3.0/1.5	51	10.43	DS,N,20
	1800	575	56	BALL	G348*	56T17F5307	F1	77.0	1.45	27	12.32	
	1800	575	143T	BALL	E828	143TTTN4030	E1	82.5	1.3	57	10.43	N
	1800	575	143T	BALL	E827 *	143TTFR4030	E8	82.5	1.2	38	12.87	A644
	1800	575	143T	BALL	E300 *	143TTTN6030	E9	85.5	1.2	55	10.43	N,X
	1200	208-230/460	56H	BALL	G360*	56T11F5304	F1	77.0	3.95-4.0/2.0	35	12.82	5,20
	1200	230/460	145T	BALL	E350 *	145TTTN6076	E9	80.0	3.4/1.7	56	11.43	N,X,20
	1200	230/460	145T	BALL	E979 *	145TTFR4076	E8	80.0	3.4/1.7	39	13.37	20
	1200	230/460	145T	BALL	E829 *	145TTTN4076	E1	80.0	3.4/1.7	57	11.43	N,20
900	230/460	182T	BALL	L409*	182TTFS8101	E6	72.0	4.0/2.0	83	14.81	20	

Blue shaded areas are Cast Iron Frames

* Stock Model

Catalog numbers (Cat No.) highlighted in bold blue have efficiency levels that meet or exceed U.S. EPA and/or NRC Canadian standards.

Footnotes:

X XRI, Ultra High Efficiency Design

N Totally Enclosed, Non-Ventilated

20 Rated 60/50 hertz, 190/380 or 380 volt at next lower horsepower

DS

5

25

Sourced

56H, 143T, and 145T Combination Base with 12 mounting holes

Motor will not accept C Face Kits

Continued on next page.

Prices and Specifications are subject to change without notice.

THREE PHASE

General Purpose, Three Phase

Totally Enclosed, Rigid Base

HP	RPM	VOLTS	FRAME	BRGS.	CAT. NO.	MODEL NO.		MULT. SYMB.	NOM. EFF.	F.L. AMPS	WGHT. LBS.	"C" DIM.	FOOT NOTES
1	1/2	3600	200	143T	BALL	E831	143TTTN4003	E1	86.5	4.5	59	10.43	N
		3600	200	143T	BALL	E830	143TTFR4003	E8	82.5	4.6	34	12.87	
	3600	208-230/460	56	BALL	G383	56T34F5331	F1	80.0	4.7-4.6/2.3	34	11.82	20	
	3600	208-230/460	143T	BALL	E833 *	143TTTN4001	E1	82.5	4.4-4.0/2.0	51	10.43	N,20	
	3600	208-230/460	143T	BALL	E832 *	143TTFR4001	E8	82.5	4.4-4.0/2.0	34	12.87	20	
	3600	230/460	143T	BALL	E351 *	143TTTN6001	E9	86.5	4.0/2.0	54	10.43	N,X	
	3600	575	56	BALL	G363	56T34F5336	F1	80.0	1.8	25	11.82		
	3600	575	143T	BALL	E834	143TTFR4005	E8	82.5	1.6	34	12.87		
	3600	575	143T	BALL	E835 *	143TTTN4005	E1	86.5	1.6	42	10.43	N	
	1800	200	145T	BALL	E836	145TTFR4029	E8	84.0	5.1	44	14.37		
	1800	200	145T	BALL	U601	145TTTN4032	E1	84.0	5.1	62	11.43	N	
	1800	200-208	145T	BALL	H665 *	145TTFR5328	E6	80.0	5.5-5.9	31	12.37		
	1800	208-230/460	56H	BALL	G365 *	56T17F5303	F1	80.0	4.8-4.8/2.4	29	12.32	5,20	
	1800	230/460	145T	BALL	E352 *	145TTTN6026	E9	84.0	4.4/2.2	62	11.43	N,X,20	
	1800	208-230/460	145T	BALL	E951 *	145TTFR4026	E8	84.0	4.6-4.4/2.2	45	14.37	20	
	1800	208-230/460	145T	BALL	E837 *	145TTTC4026	E1	84.0	4.6-4.2/2.1	58	11.43	DS,N,20	
	1800	575	145T	BALL	E838 *	145TTFR4038	E8	84.0	1.8	45	14.37		
	1800	575	145T	BALL	E839	145TTTN4035	E1	84.0	1.8	62	11.43	N	
	1800	575	145T	BALL	E301	145TTTN6031	E9	84.0	1.8	63	11.43	N,X	
	2	1200	230/460	182T	BALL	E231 *	182TTTS6076	E9	87.5	4.4/2.2	79	12.71	N,X,20
1200		230/460	182T	BALL	E982 *	182TTFR4076	E8	85.5	5.0/2.5	64	14.97	20	
1200		230/460	182T	BALL	E823 *	182TTFS4076	E1	85.5	5.0/2.5	89	14.81	20	
900		230/460	184T	BALL	L410 *	184TTFS8102	E6	74.0	5.8/2.9	94	15.81	20	
3600		200	145T	BALL	E840	145TTFR4005	E8	84.0	6.0	38	13.37		
3600		200	145T	BALL	E841	145TTTN4003	E1	86.5	6.0	68	11.43	N	
3600		208-230/460	56H	BALL	G384	-----	F1	80.0	6.6-6.6/3.3	39	12.32	5,20,25	
3600		208-230/460	145T	BALL	E994 *	145TTFR4001	E8	84.0	5.7-5.2/2.6	35	13.37	20	
3600		230/460	145T	BALL	E353 *	145TTTN6001	E9	86.5	5.4/2.7	64	11.43	N,X,20	
3600		208-230/460	145T	BALL	E842 *	145TTTN4001	E1	84.0	5.8-5.4/2.7	64	11.43	N,20	
3	3600	575	56H	BALL	G368	56T34F5337	F1	80.0	2.4	29	12.32	5	
	3600	575	145T	BALL	E843	145TTFR4007	E8	84.0	2.1	38	13.37		
	3600	575	145T	BALL	E844	145TTTN4005	E1	86.5	2.1	66	11.43	N	
	1800	200	145T	BALL	E845	145TTFR4032	E8	84.0	6.4	46	13.87		
	1800	200	145T	BALL	U606	145TTTN4030	E1	85.5	6.6	64	11.43	N	
	1800	200-208	145T	BALL	H666 *	145TTFR5330	E6	82.5	6.8-6.8	40	13.87		
	1800	208-230/460	56H	BALL	G369	56T17F5326	F1	82.5	6.0-5.8/2.9	39	13.82	5,20	
	1800	208-230/460	145T	BALL	E952 *	145TTFR4027	E8	84.0	6.0-5.6/2.8	42	13.87	20	
	1800	230/460	145T	BALL	E354 *	145TTTN6027	E9	85.5	6.0/3.0	64	11.43	N,X	
	1800	208-230/460	145T	BALL	E846 *	145TTTC4027	E1	84.0	6.0-5.6/2.8	63	11.43	DS,N,20	
	1800	575	145T	BALL	E847 *	145TTFR4039	E8	84.0	2.2	42	13.87		
	1800	575	145T	BALL	E848 *	145TTTN4040	E1	85.5	2.4	65	11.43	N	
	1800	575	145T	BALL	E302 *	145TTTN6030	E9	85.5	2.4	67	11.43	N,X	
	1200	230/460	184T	BALL	E232 *	184TTTS6076	E9	88.5	6.0/3.0	125	13.71	N,X,20	
	1200	230/460	184T	BALL	E995 *	184TTFR4076	E8	87.5	5.8/2.9	72	15.97	20	
	1200	230/460	184T	BALL	E849 *	184TTFS4076	E1	86.5	6.0/3.0	98	15.81	20	
	900	230/460	213T	BALL	L411 *	213TTFS8103	E6	75.5	8.2/4.1	153	18.22	20	
	3	3600	200	182T	BALL	U600	182TTFR4003	E8	85.5	8.5	64	14.97	
3600		208-230/460	56H	BALL	G385	56T34F5338	F1	84.0	8.4-7.6/3.8	51	13.52	5,20	
3600		208-230/460	182T	BALL	U602 *	182TTFS4001	E1	85.5	8.6-7.4/3.7	91	14.81	20	
3600		208-230/460	182T	BALL	E967 *	182TTFR4001	E8	85.5	8.2-7.4/3.7	69	14.97	20	
3600		230/460	182T	BALL	E216 *	182TTTS6001	E9	89.5	7.6/3.8	94	12.71	N,X,20	
3600		575	56H	BALL	G386	56T34F5339	F1	84.0	3.1	41	13.52	5,25	
3600		575	182T	BALL	U603	182TTFR4005	E8	85.5	3.0	67	14.97		
3600		575	182T	BALL	U604	182TTFS4005	E1	85.5	3.0	81	14.81		

Blue shaded areas are Cast Iron Frames

* Stock Model

Catalog numbers (Cat No.) highlighted in bold blue have efficiency levels that meet or exceed U.S. EPCAct and/or NRCAN Canadian standards.

Footnotes:

DS Sourced
N Totally Enclosed, Non-Ventilated
X XRI, Ultra High Efficiency Design

5 56H, 143T, and 145T Combination Base with 12 mounting holes
20 Rated 60/50 hertz, 190/380 or 380 volt at next lower horsepower
25 Motor will not accept C-Face Kit

Continued on next page.

General Purpose, Three Phase

Totally Enclosed, Rigid Base

HP	RPM	VOLTS	FRAME	BRGS.	CAT. NO.	MODEL NO.	MULT. SYMB.	NOM. EFF.	F.L. AMPS	WGHT. LBS.	"C" DIM.	FOOT NOTES
3	1800	200	182T	BALL	L633★	182TFR5327	E6	84.0	9.9	51	15.65	25
	1800	200	182T	BALL	U605	182TFR4038	E8	87.5	9.7	98	14.97	
	1800	208-230/460	182T	BALL	H710★	182TFR7726	E6	82.5	9.0-8.4/4.2	62	14.97	C,20
	1800	230/460	56H	BALL	G387	56T17F5327	F1	84.0	8.6/4.3	48	14.82	20
	1800	208-230/460	182T	BALL	E953 ★	182TFR4026	E8	87.5	8.8-8.0/4.0	74	14.97	20
	1800	230/460	182T	BALL	E201 ★	182TTS6026	E9	90.2	8.0/4.0	102	12.71	N,X
	1800	208-230/460	182T	BALL	U607 ★	182TFC4026	E1	87.5	8.4-7.6/3.8	105	14.81	DS,20
	1800	575	182T	BALL	U608 ★	182TFR4040	E8	87.5	3.4	98	14.97	
	1800	575	182T	BALL	U609 ★	182TFS4030	E1	87.5	3.4	98	14.81	
	1800	575	182T	BALL	E303 ★	182TTS6030	E9	90.2	3.2	100	12.71	N,X
	1200	230/460	213T	BALL	U610 ★	213TFS4076	E1	87.5	8.8/4.4	155	18.20	d,20
	1200	208-230/460	213T	BALL	U610 ★	213TFC4076	E1	89.5	9.8-9.4/4.7	148	18.19	DS
	1200	230/460	213T	BALL	E980 ★	213TFFW4076	E8	87.5	9.2/4.6	130	18.73	20
	1200	230/460	213T	BALL	E233 ★	213TFS6076	E9	89.5	8.8/4.4	173	18.20	X
	900	230/460	215T	BALL	L421★	215TFS8101	E6	81.5	11.4/5.7	151	19.72	20
5	3600	200	184T	BALL	U611	184TFR4003	E8	87.5	14.3	86	15.97	
	3600	208-230/460	184T	BALL	U613 ★	184TFS4001	E1	87.5	13.0-12.4/6.2	107	15.81	20
	3600	230/460	184T	BALL	E217 ★	184TFS6001	E9	89.5	11.8/5.9	109	15.81	X
	3600	208-230/460	184T	BALL	E963 ★	184TFR4001	E8	87.5	13.0-12.4/6.2	81	15.97	20
	3600	575	184T	BALL	U614	184TFR4005	E8	87.5	5.0	89	15.97	
	3600	575	184T	BALL	U615 ★	184TFS4005	E1	87.5	5.0	106	15.81	
	1800	200	184T	BALL	U616	184TFR4038	E8	87.5	14.7	82	15.97	
	1800	200	184T	BALL	H668★	184TFR7727	E6	84.0	15.2	78	16.97	
	1800	208-230/460	184T	BALL	L909★	184TFR9339	E6	84.0	14.8-13.6/6.8	92	16.47	C,20
	1800	208-230/460	184T	BALL	E954 ★	184TFR4026	E8	87.5	14.0-12.6/6.3	76	15.97	20
	1800	230/460	184T	BALL	E202 ★	184TFS6026	E9	90.2	12.4/6.2	117	15.81	X
	1800	208-230/460	184T	BALL	U618 ★	184TFC4026	E1	87.5	14.0-13.0/6.5	112	15.81	DS,20
	1800	575	184T	BALL	U619 ★	184TFR4040	E8	87.5	5.1	78	15.97	
	1800	575	184T	BALL	U620 ★	184TFS4030	E1	87.5	5.2	89	15.81	
	1800	575	184T	BALL	E304 ★	184TFS6030	E9	90.2	5.0	125	15.81	X
	1200	230/460	215T	BALL	E970 ★	215TFFW4076	E8	87.5	14.0/7.0	143	20.23	20
	1200	230/460	215T	BALL	U621 ★	215TFS4076	E1	88.5	13.8/6.9	175	19.70	d,20
	1200	208-230/460	215T	BALL	U621 ★	215TFC4076	E1	89.5	16.2-16.0/8.0	176	19.61	DS
	1200	230/460	215T	BALL	E234 ★	215TFS6076	E9	89.5	13.8/6.9	203	19.70	X
	900	230/460	254T	BALL	L412★	254TFPA8102	E6	84.0	17.0/8.5	325	23.69	20
	7 1/2	3600	200	213T	BALL	U622	213TFFW4003	E8	89.5	21.2	136	20.23
3600		230/460	213T	BALL	E972 ★	213TFFW4001	E8	89.5	18.4/9.2	114	20.23	20
3600		230/460	213T	BALL	E218 ★	213TTS6001	E9	91.7	17.8/8.9	185	15.69	N,X
3600		230/460	213T	BALL	U624 ★	213TFS4001	E1	88.5	19.0/9.5	128	18.20	20
3600		575	213T	BALL	U625	213TFFW4005	E8	89.5	7.4	128	20.23	
3600		575	213T	BALL	U671 ★	213TFS4005	E1	88.5	7.2	197	18.20	
1800		200	213T	BALL	U627	213TFFW4028	E8	89.5	23.0	125	18.73	
1800		200	213T	BALL	H669★	213TFFW7028	E8	87.5	22.3	103	18.73	
1800		230/460	213T	BALL	E203 ★	213TFS6026	E9	91.7	19.2/9.6	194	18.20	X
1800		208-230/460	213T	BALL	U629 ★	213TFC4026	E1	89.5	21.0-19.0/9.5	160	18.20	DS,20
1800		208-230/460	213T	BALL	E955 ★	213TFFW4026	E8	89.5	21.6-20.0/10.0	118	18.73	20
1800		208-230/460	213T	BALL	L910★	213TFFW7326	E6	86.5	22.0-21.0/10.5	103	18.73	C,20
1800		575	213T	BALL	U630 ★	213TFFW4030	E8	89.5	8.0	135	18.73	
1800		575	213T	BALL	U631 ★	213TFS4030	E1	89.5	8.0	220	18.20	
1800		575	213T	BALL	E305 ★	213TFS6030	E9	91.7	7.6	192	19.70	X
1200		230/460	254T	BALL	U632 ★	254TFL4076	E8	89.5	22.0/11.0	175	22.99	AL,20
1200		230/460	254T	BALL	E235 ★	254TFNA6076	E9	91.0	19.8/9.9	223	23.52	X
1200		230/460	254T	BALL	U633 ★	254TFNA4076	E1	89.5	20.4/10.2	213	23.52	d,A,20
1200		208-230/460	254T	BALL	U633 ★	254TFC4076	E1	89.5	21.0-20.0/10.0	250	23.19	DS
900		230/460	256T	BALL	L413★	256TFPA8102	E6	85.0	24.0/12.0	415	25.44	20

Blue shaded areas are Cast Iron Frames

★ **Stock Model**

Catalog numbers (Cat No.) highlighted in bold blue have efficiency levels that meet or exceed U.S. EPA and/or NRC Canadian standards.

Footnotes:

- d To be discontinued after current stock is gone
- A NEMA Design A
- AL Aluminum Frame Construction
- C NEMA Design C torques
- DS Sourced

- N Totally Enclosed, Non-Ventilated
- X XRI, Ultra High Efficiency Design
- 20 Rated 60/50 hertz, 190/380 or 380 volt at next lower horsepower
- 25 Motor will not accept C-Face kit

Continued on next page.

THREE PHASE

General Purpose, Three Phase

Totally Enclosed, Rigid Base

HP	RPM	VOLTS	FRAME	BRGS.	CAT. NO.	MODEL NO.		MULT. SYMB.	NOM. EFF.	F.L. AMPS	WGHT. LBS.	"C" DIM.	FOOT NOTES
10	3600	200	215T	BALL	U634	215TTFW4003		E8	89.5	27.6	152	20.23	
	3600	230/460	215T	BALL	U636 *	215TTFS4001		E1	89.5	24.0/12.0	165	19.70	20
	3600	230/460	215T	BALL	E969 *	215TTFW4001		E8	89.5	24.0/12.0	128	20.23	20
	3600	230/460	215T	BALL	E219 *	215TTFS6001		E9	91.7	23.6/11.8	217	19.70	X
	3600	575	215T	BALL	U637	215TTFS4005		E1	89.5	9.6	184	19.70	
	3600	575	215T	BALL	E821 *	215TTFW4005		E8	89.5	9.6	145	20.23	
	1800	200	215T	BALL	H670*	215TTFW7028		E6	88.5	28.8	130	20.23	
	1800	200	215T	BALL	E822	215TTFW4028		E8	89.5	29.9	125	20.23	
	1800	208-230/460	215T	BALL	L911*	215TTFW7326		E6	87.5	29.0-26.0/13.0	123	20.23	C,20
	1800	230/460	215T	BALL	E204 *	215TTFS6026		E9	91.7	25.0/12.5	213	19.70	X
	1800	208-230/460	215T	BALL	U639 *	215TTFC4026		E1	89.5	28.4-25.6/12.8	180	19.70	DS,20
	1800	208-230/460	215T	BALL	E956 *	215TTFW4026		E8	89.5	28.0-26.0/13.0	143	20.23	20
	1800	575	215T	BALL	E306	215TTFS6030		E9	91.7	10.0	142	19.70	X
	1800	575	215T	BALL	U640 *	215TTFW4030		E8	89.5	10.4	138	20.23	
	1800	575	215T	BALL	U641 *	215TTFS4030		E1	89.5	10.0	197	19.70	
	1200	230/460	256T	BALL	E236 *	256TTFNA6076		E9	91.0	26.2/13.1	368	25.27	X
	1200	230/460	256T	BALL	U642 *	256TTFNA4076		E1	89.5	26.0/13.0	365	25.27	d,20
	1200	208-230/460	256T	BALL	U643 *	256TTFC4076		E1	89.5	28.3-26.2/13.1	277	24.92	DS
	1200	230/460	256T	BALL	E973 *	256TTFL4076		E8	89.5	26.0/13.0	212	26.24	AL,20
	900	230/460	284T	BALL	L414*	284TTFP8102		E6	85.5	31.0/15.5	360	26.26	20
15	3600	200	254T	BALL	U643	254TTFL4002		E8	91.0	40.5	178	22.99	AL
	3600	230/460	215T	BALL	U670 *	215TTFW4007		E8	90.2	36.0/18.0	140	20.23	20
	3600	230/460	254T	BALL	U644 *	254TTFPA4001		E1	90.2	36.0/18.0	189	23.69	20
	3600	230/460	254T	BALL	E220 *	254TTFNA6001		E9	91.7	35.0/17.5	384	23.52	X
	3600	230/460	254T	BALL	E977 *	254TTFL4001		E8	91.0	35.0/17.5	265	22.99	AL,20
	3600	575	254T	BALL	U645	254TTFL4005		E8	91.0	14.0	196	22.99	AL
	3600	575	254T	BALL	U638	254TTFPA4005		E1	90.2	14.4	260	23.69	
	1800	200	254T	BALL	H623*	254TTFL5747		E6	88.5	44.4	178	22.99	AL
	1800	200	254T	BALL	U646	254TTFL4027		E8	91.0	46.0	190	22.99	AL
	1800	208-230/460	254T	BALL	L912*	254TTFL5772		E6	88.5	42.0-39.0/19.5	190	24.74	AL,C,20
	1800	208-230/460	254T	BALL	E996 *	254TTFL4026		E8	91.0	42.0-40.0/20.0	194	22.99	AL,20
	1800	230/460	254T	BALL	E205 *	254TTFNA6026		E9	92.4	37.6/18.8	322	23.52	X
	1800	230/460	254T	BALL	U647 *	254TTFC4026		E1	91.0	38.0/19.0	324	23.69	DS,20
	1800	575	254T	BALL	U648 *	254TTFNA4030		E1	91.0	15.6	341	23.52	
	1800	575	254T	BALL	E307 *	254TTFNA6030		E9	92.4	15.0	326	23.52	X
	1800	575	254T	BALL	E997 *	254TTFL4030		E8	91.0	16.0	198	22.99	AL
	1200	230/460	284T	BALL	E237 *	284TTFNA6076		E9	91.7	40.8/20.4	490	26.34	X
	1200	230/460	284T	BALL	E978 *	284TTFNA4076		E1	90.2	40.0/20.0	568	26.34	d,20
	1200	208-230/460	284T	BALL	E978 *	284TTFC4076		E1	90.2	44.7-40.4/20.2	359	26.26	DS
	900	230/460	286T	BALL	L415*	286TTFP8102		E6	86.5	45.0/22.5	342	27.76	20
20	3600	230/460	256T	BALL	E221 *	256TTFNA6001		E9	92.4	46.8/23.4	385	25.27	X
	3600	230/460	256T	BALL	E974 *	256TTFL4001		E8	90.2	47.0/23.5	198	24.74	AL,20
	3600	230/460	256T	BALL	U649 *	256TTFNA4001		E1	90.2	47.0/23.5	334	25.27	20
	3600	575	256T	BALL	U650	256TTFNA4005		E1	90.2	18.8	310	25.27	
	1800	200	256T	BALL	U651	256TTFL4027		E8	91.0	58.7	247	26.24	AL
	1800	200	256T	BALL	H274	256TTFL5027		E6	88.5	60.0	190	24.74	AL
	1800	208-230/460	256T	BALL	E965 *	256TTFL4026		E8	91.0	55.0-51.0/25.5	178	26.24	AL,20
	1800	208-230/460	256T	BALL	L913*	256TTFL5043		E6	88.5	56.0-52.0/26.0	172	24.74	AL,C,20
	1800	230/460	256T	BALL	E206 *	256TTFNA6026		E9	93.0	48.2/24.1	368	25.27	X
	1800	230/460	256T	BALL	U652 *	256TTFC4026		E1	91.0	51.0/25.5	376	25.44	DS,20
	1800	575	256T	BALL	E308 *	256TTFNA6030		E9	93.0	19.3	368	25.27	X
	1800	575	256T	BALL	E998 *	256TTFL4030		E8	91.0	20.4	201	26.24	AL
	1800	575	256T	BALL	U653 *	256TTFNA4030		E1	91.0	20.0	341	25.27	
	1200	230/460	286T	BALL	E238 *	286TTFNA6076		E9	91.7	53.6/26.8	515	27.88	X
	1200	230/460	286T	BALL	E968 *	286TTFN4076		E1	90.2	54.0/27.0	425	27.88	d,20
	1200	208-230/460	286T	BALL	E968 *	286TTFC4076		E1	90.2	58.2-52.6/26.3	408	27.83	DS
	900	230/460	324T	BALL	L416*	324TTFPA8104		E6	87.5	64.0/32.0	586	28.82	20

Blue shaded areas are Cast Iron Frames

* **Stock Model**

Catalog numbers (Cat No.) highlighted in bold blue have efficiency levels that meet or exceed U.S. EPA and/or NRC Canadian standards.

Footnotes:

- d To be discontinued after current stock is gone
- AL Aluminum Frame Construction
- C NEMA Design C torques
- DS Sourced
- X XRI, Ultra High Efficiency Design
- 20 Rated 60/50 hertz, 190/380 or 380 volt at next lower horsepower

Continued on next page.

General Purpose, Three Phase

Totally Enclosed, Rigid Base

HP	RPM	VOLTS	FRAME	BRGS.	CAT. NO.	MODEL NO.	MULT. SYMB.	NOM. EFF.	F.L. AMPS	WGHT. LBS.	"C" DIM.	FOOT NOTES
25	3600	230/460	284TS	BALL	E222 *	284TSTFNA6001	E9	93.6	56.2/28.1	520	24.97	X
	3600	230/460	284TS	BALL	E975 *	284TSTFPA4001	E1	91.0	60.0/30.0	392	24.89	20
	3600	575	284TS	BALL	U654	284TSTFPA4005	E1	91.0	24.0	545	24.89	
	1800	208-230/460	284T	BALL	E961 *	284TTFCA026	E1	92.4	64.0-58.0/29.0	478	26.44	DS,20
	1800	230/460	284T	BALL	E207 *	284TTFNA6026	E9	93.6	62.0/31.0	495	26.34	X
	1800	208-230/460	284TS	BALL	E999 *	284TSTFPA4036	E1	92.4	68.0-63.0/31.5	324	24.89	20
	1800	575	284T	BALL	E309 *	284TTFNA6030	E9	93.6	24.6	565	26.34	X
	1800	575	284T	BALL	E800 *	284TTFPA4030	E1	92.4	24.8	324	26.27	
	1800	200	284T	BALL	U655	284TTFPA4028	E1	92.4	71.0	368	31.87	
	1200	230/460	324T	BALL	E239 *	324TTFSS6076	E9	93.0	64.0/32.0	637	28.87	X
	1200	230/460	324T	BALL	E820 *	324TTFPA4076	E1	91.7	67.0/33.5	483	28.97	20
	900	230/460	326T	BALL	L417 *	326TTFPA8107	E6	88.5	78.0/39.0	602	30.32	20
30	3600	230/460	286TS	BALL	E964 *	286TSTFPA4001	E1	91.0	72.0/36.0	430	26.39	20
	3600	230/460	286TS	BALL	E223 *	286TSTFNA6001	E9	93.6	67.6/33.8	520	26.47	X
	3600	575	286TS	BALL	E318	-----	E9	93.6	27.0	496	26.44	X
	3600	575	286TS	BALL	E819 *	286TSTFPA4005	E1	91.0	28.0	476	26.44	
	1800	208-230/460	286T	BALL	E983 *	286TTFCA026	E1	92.4	77.0-70.0/35.0	500	27.94	DS,20
	1800	230/460	286T	BALL	E208 *	286TTFNA6026	E9	94.1	73.0/36.5	423	27.84	X
	1800	208-230/460	286TS	BALL	E818 *	286TSTFP4036	E1	92.4	81.0-74.0/37.0	432	26.44	20
	1800	575	286T	BALL	E310 *	286TTFNA6030	E9	94.1	29.0	514	27.84	X
	1800	575	286T	BALL	E817 *	286TTFPA4030	E1	92.4	29.6	320	27.77	
	1200	230/460	326T	BALL	E240 *	326TTFSS6076	E9	93.0	77.0/38.5	691	30.37	X
	1200	230/460	326T	BALL	E966 *	326TTFSS4080	E1	91.7	76.0/38.0	691	30.37	20
	900	460	364T	BALL	L420 *	364TTFSS8101	E6	91.0	44.0	916	31.50	20
40	3600	230/460	324TS	BALL	E224 *	324TSTFSS6001	E9	94.1	94.0/47.0	665	27.37	X
	3600	230/460	324TS	BALL	E971 *	324TSTFPA4001	E1	91.7	95.0/47.5	520	27.47	20
	3600	575	324TS	BALL	E319	324TSTFSS6005	E9	94.1	37.6	602	27.37	X
	1800	230/460	324T	BALL	E209 *	324TTFSS6026	E9	94.1	95.0/47.5	602	30.37	X
	1800	208-230/460	324T	BALL	E984 *	324TTFCA026	E1	93.0	100/50.0	635	28.97	20
	1800	230/460	324TS	BALL	E816 *	324TSTFPA4036	E1	93.0	100/50.0	525	27.47	20
	1800	575	324T	BALL	E815 *	324TTFPA4030	E1	93.0	40.0	555	28.97	
	1800	575	324T	BALL	E311 *	324TTFSS6030	E9	94.1	38.8	602	28.87	X
	1200	230/460	364T	BALL	E241 *	364TTFSS6086	E9	93.6	100/50.0	962	31.50	X
	1200	230/460	364T	BALL	E988 *	364TTFSS4086	E1	93.0	102/51.0	888	31.50	20
	900	460	365T	BALL	L425 *	365TTFSS8115	E6	91.0	55.5	970	32.50	20
	50	3600	230/460	326TS	BALL	E976 *	326TSTFPA4001	E1	92.4	114/57.0	540	28.82
3600		230/460	326TS	BALL	E225 *	326TSTFSS6001	E9	94.5	116/58.0	705	28.87	X
3600		575	326TS	BALL	E320	326TSTFSS6005	E9	94.5	46.5	640	28.87	X
1800		230/460	326T	BALL	E210 *	326TTFSS6026	E9	94.5	120/60.0	745	31.87	X
1800		230/460	326T	BALL	E962 *	326TTFCA026	E1	93.0	117/58.5	655	30.32	DS,20
1800		230/460	326TS	BALL	E801 *	326TSTFPA4036	E1	93.0	122/61.0	710	28.97	20
1800		575	326T	BALL	U659 *	326TTFPA4030	E1	93.0	48.8	589	30.47	
1800		575	326T	BALL	E312 *	326TTFSS6030	E9	94.5	48.0	640	30.37	X
1200		230/460	365T	BALL	E242 *	365TTFSS6086	E9	93.6	123/61.5	975	32.50	X
1200		230/460	365T	BALL	E993 *	365TTFSS4086	E1	93.0	124/62.0	967	32.50	20
900		460	404T	BALL	L426 *	404TTFSS8102	E6	92.4	69.0	1191	35.62	20
60		3600	230/460	364TS	BALL	E960 *	364TSTFSS4001	E1	93.0	141/70.5	1135	29.38
	3600	230/460	364TS	BALL	E226 *	364TSTFSS6001	E9	94.5	134/67	912	29.38	X
	3600	575	364TS	BALL	E321	364TSTFSS6005	E9	94.5	54.0	936	29.38	X
	1800	230/460	364T	BALL	E211 *	364TTFSS6036	E9	95.0	138/69.0	920	31.50	X
	1800	230/460	364T	BALL	E985 *	364TTFCA036	E1	93.6	137/68.5	1016	31.50	DS,20
	1800	230/460	364TS	BALL	E802 *	364TSTFSS4026	E1	93.6	144/72.0	945	29.38	20
	1800	575	364T	BALL	U660 *	364TTFSS4040	E1	93.6	58.0	952	31.50	
	1800	575	364T	BALL	E313 *	364TTFSS6040	E9	95.0	55.0	980	31.50	X
	1200	230/460	404T	BALL	E803 *	404TTFSS4086	E1	93.6	144/72.0	1188	35.62	20
	1200	230/460	404T	BALL	E243 *	404TTFSS6086	E9	94.5	144/72.0	1188	35.62	X
	900	460	405T	BALL	L427 *	405TTFSS8114	E6	91.7	81.0	1340	37.12	20

Blue shaded areas are Cast Iron Frames

* **Stock Model**

Catalog numbers (Cat No.) highlighted in bold blue have efficiency levels that meet or exceed U.S. EPA and/or NRC Canadian standards.

Footnotes:

DS Sourced
 X XRI, Ultra High Efficiency Design
 20 Rated 60/50 hertz, 190/380 or 380 volt at next lower horsepower
 89 Threaded NPT opening in conduit box

Continued on next page.

Prices and Specifications are subject to change without notice.

General Purpose, Three Phase

Totally Enclosed, Rigid Base

HP	RPM	VOLTS	FRAME	BRGS.	CAT. NO.	MODEL NO.	MULT. SYMB.	NOM. EFF.	F.L. AMPS	WGHT. LBS.	"C" DIM.	FOOT NOTES
75	3600	230/460	365TS	BALL	E227 ★	365TSTFS6001	E9	94.5	168/84.0	1001	30.38	X
	3600	230/460	365TS	BALL	E991 ★	365TSTFS4001	E1	93.0	174/87.0	997	30.38	20,89
	3600	575	365TS	BALL	E322	365TSTFS6002	E9	94.5	67.0	1002	30.38	X
	1800	230/460	365T	BALL	E957 ★	365TTFS4036	E1	94.1	171/86.0	1106	32.50	DS,20
	1800	230/460	365T	BALL	E212 ★	365TTFS6036	E9	95.4	172/86.0	1018	32.50	X
	1800	230/460	365TS	BALL	E804 ★	365TSTFS4026	E1	94.1	178/89.0	1026	30.38	
	1800	575	365T	BALL	E315 ★	365TTFS6040	E9	95.4	69.0	1048	32.50	X
	1800	575	365T	BALL	E805 ★	365TTFS4040	E1	94.1	71.0	1035	32.50	
	1200	230/460	405T	BALL	E244 ★	405TTFS6086	E9	95.0	179/90.0	1280	37.12	X
	1200	230/460	405T	BALL	E806 ★	405TTFS4086	E1	93.6	182/91.0	1298	37.12	20
900	460	444T	BALL	L428★	444TTFS8106	E6	93.0	97.0	1820	41.25	20	
100	3600	230/460	405TS	BALL	E807 ★	405TSTFS4001	E1	94.1	220/110	1239	34.12	20,89
	3600	230/460	405TS	BALL	E228 ★	405TSTFS6001	E9	95.0	216/108	1296	34.12	X
	3600	575	405TS	BALL	E323	405TSTFS6005	E9	95.0	87.0	1296	34.12	X
	1800	230/460	405T	BALL	E959 ★	405TTFS4036	E1	94.5	228/114	1277	37.12	20
	1800	230/460	405T	BALL	E213 ★	405TTFS6036	E9	95.4	226/113	1338	37.12	X
	1800	230/460	405TS	BALL	E808 ★	405TSTFS4026	E1	94.5	228/114	1273	34.12	20
	1800	575	405T	BALL	U661 ★	405TTFS4040	E1	94.5	91.0	1267	37.12	
	1800	575	405T	BALL	E314 ★	405TTFS6040	E9	95.4	90.0	1335	37.12	X
	1200	230/460	444T	BALL	E245	444TTFS6086	E9	94.5	238/119	1690	41.25	X
	1200	230/460	444T	BALL	E809 ★	444TTFS4086	E1	94.1	238/119	1819	41.25	20
900	460	445T	BALL	L429★	445TTFN8115	E6	93.6	133	2377	43.19	20	
125	3600	460	444TS	BALL	E229 ★	444TSTFS6001	E9	95.4	136	1692	37.50	PW,X
	3600	460	444TS	BALL	E992 ★	444TSTFS4001	E1	94.5	137	1731	37.50	PW
	3600	575	444TS	BALL	E324	-----	E9	95.4	109	1689	37.50	PW,X,25
	1800	460	444T	BALL	E214 ★	444TTFS6036	E9	95.4	141	1727	41.25	PW,X
	1800	460	444T	BALL	E987 ★	444TTFS4036	E1	94.5	142	1805	41.25	PW,20
	1800	460	444TS	BALL	E810 ★	444TSTFS4026	E1	94.5	142	1787	37.50	
	1800	575	444T	BALL	E316	444TTFS6044	E9	95.8	113	1788	41.25	PW,X
	1800	575	444T	BALL	U662	444TTFS4040	E1	94.5	114	1826	41.25	
	1200	460	445T	BALL	E246 ★	445TTFS6086	E9	95.0	155	2092	43.19	X
	1200	460	445T	BALL	U663	445TTFN4086	E1	94.1	155	2082	43.19	
900	460	445T	ROLLER	L440★	445TTFN8102	E6	93.6	169	2377	43.19	H,RB,20	
150	3600	460	445TS	BALL	E230	445TSTFN6001	E9	95.8	165	2203	39.44	X
	3600	460	445TS	BALL	E981 ★	445TSTFN4001	E1	95.0	167	2191	39.44	
	1800	460	445T	BALL	E986 ★	445TTFN4036	E1	95.0	172	2116	43.19	20
	1800	460	445T	BALL	E215 ★	445TTFN6036	E9	95.8	172	2103	43.19	X
	1800	460	445TS	BALL	E811 ★	445TSTFN4026	E1	95.0	172	2070	39.44	
	1800	575	445T	BALL	E317	445TTFN6037	E9	95.8	138	2118	43.19	PW,X
	1200	460	445T	ROLLER	E289	445TTFN6087	E9	95.8	180	2457	43.19	RB,X
	1200	460	445T	ROLLER	E958 ★	445TTFN4087	E1	95.0	182	2275	43.19	H,RB
	900	460	447/9T	ROLLER	L442★	449TTFS8111	E6	94.5	206	2967	51.69	H,RB,20
200	3600	460	445TS	BALL	E285	-----	E9	95.8	223	2276	39.44	X,25
	3600	460	445TS	BALL	E812 ★	445TSTFN4005	E1	95.0	222	2262	39.44	H
	1800	460	445T	ROLLER	E247 ★	445TTFN6038	E9	96.2	226	2344	43.19	RB,X
	1800	460	445T	ROLLER	E989 ★	445TTFN4038	E1	95.0	225	2287	43.19	RB,20
	1800	460	445TS	BALL	E813 ★	445TSTFN4028	E1	95.0	225	2215	39.44	
	1800	575	445T	BALL	U667	445TTFN4049	E1	95.0	180	2311	43.19	
	1800	460	445T	BALL	U669	445TTFN4059	E1	95.0	225	2287	43.19	20
	1800	575	445T	ROLLER	E326	445TTFN6039	E9	96.2	181	2339	43.19	RB,X
	1200	460	447/9T	ROLLER	E282	-----	E9	95.8	240	3087	51.69	H,RB,X,25
	1200	460	447/9T	ROLLER	E814 ★	449TTFS4088	E1	95.0	243	2740	51.69	H,RB,YD
900	460	447/9T	ROLLER	L449★	449TTFS8110	E6	94.5	270	3389	51.69	H,RB,YD,20	

THREE PHASE

Blue shaded areas are Cast Iron Frames

★ Stock Model

Catalog numbers (Cat No.) highlighted in bold blue have efficiency levels that meet or exceed U.S. EPA and/or NRC Canadian standards.

Continued on next page.

Footnotes:

- DS Sourced
- H Class H Insulation
- PW Part Winding Start Capability
- RB Roller Bearing on shaft end for belted loads only

- X XRI, Ultra High Efficiency Design
- YD 12 Leads for WYE-DELTA, Part Winding on low voltage, or across-the-line starting
- 20 Rated 60/50 hertz, 190/380 or 380 volt at next lower horsepower
- 25 Motor will not accept C-Face Kit
- 89 Threaded NPT opening in conduit box

General Purpose, Three Phase

Totally Enclosed, Rigid Base

HP	RPM	VOLTS	FRAME	BRGS.	CAT. NO.	MODEL NO.		MULT. SYMB.	NOM. EFF.	F.L. AMPS	WGHT. LBS.	"C" DIM.	FOOT NOTES
250	3600	460	445TS	BALL	L450	445TSTFN8007		E9	94.5	275	2266	39.44	H,17,20
	3600	460	447/9TS	BALL	E271	449TSTFS6003		E9	96.5	274	2827	47.88	H,X
	3600	460	447/9TS	BALL	L451 ★	449TSTFS8003		E9	95.0	280	2079	47.88	H,YD,20
	1800	460	445T	ROLLER	E287 ★	445TTFN6040		E9	95.8	285	2375	43.19	RB,X
	1800	460	445T	ROLLER	L452 ★	445TTFN8040		E9	95.0	285	2395	43.19	H,RB,YD,20
	1800	460	447/9T	BALL	L455	449TTFS8028		E9	95.0	290	2802	51.69	H,YD,20
	1800	460	447/9T	ROLLER	E276	449TTFS6038		E9	96.5	285	2811	51.69	A,H,RB,X
	1800	460	447/9T	ROLLER	L454 ★	449TTFS8038		E9	95.0	290	2775	51.69	H,RB,YD,20
	1800	575	445T	ROLLER	L453	445TTFN8041		E9	95.0	228	2394	43.19	RB
	1200	460	447/9T	ROLLER	L456 ★	449TTFS8087		E9	95.4	300	3394	51.69	H,RB,YD,20
	1200	460	447/9T	BALL	L457	449TTFS8077		E9	95.4	300	3092	51.69	H,YD,20
	1200	460	447/9T	ROLLER	E283	449TTFS6087		E9	95.8	300	3345	51.69	H,RB,X
	900	460	447/9T	ROLLER	L458	449TTFS8113		E6	94.5	340	3245	51.69	H,RB,YD,17,20
300	3600	460	447/9TS	BALL	L459 ★	449TSTFS8002		E9	95.4	330	2702	47.88	H,YD,20
	3600	460	447/9TS	BALL	E272	449TSTFS6002		E9	96.2	330	2900	47.88	H,X
	1800	460	445T	ROLLER	L460 ★	445TTFN8042		E9	95.0	340	2410	43.19	H,RB,YD,17
	1800	460	447/9T	ROLLER	L462 ★	449TTFS8037		E9	95.4	338	2960	51.69	H,RB,YD,20
	1800	460	447/9T	BALL	L463	449TTFS8027		E9	95.4	338	3041	51.69	H,YD,20
	1800	460	447/9T	ROLLER	E277	449TTFS6037		E9	96.5	339	3068	51.69	H,RB,X
	1800	575	445T	ROLLER	L461	445TTFN8043		E9	95.0	272	2428	43.19	H,RB,YD,17
	1200	460	447/9T	ROLLER	E284	449TTFS6390		E9	95.8	362	3658	56.71	H,RB,X
	1200	460	447/9T	BALL	L465 ★	449TTFS8076		E9	95.4	351	3440	51.69	H,YD,17,20
	1200	460	447/9T	ROLLER	L464 ★	449TTFS8086		E9	95.4	357	3428	51.69	H,RB,YD,17,20
350	3600	460	447/9TS	BALL	E273	449TSTFS6001		E9	96.2	382	2898	47.88	X
	3600	460	447/9TS	BALL	L466 ★	449TSTFS8001		E9	95.4	385	3057	47.88	H,YD
	1800	460	447/9T	ROLLER	E278	-----		E9	96.2	395	3211	51.69	H,RB,X
	1800	460	447/9T	ROLLER	L467 ★	449TTFS8036		E9	95.4	400	3202	51.69	H,RB,YD
400	3600	460	5011S	BALL	E274	-----		E9	94.5	505	5200	67.19	H
	1800	460	447/9T	BALL	E291	-----		E9	96.2	460	3850	56.71	H,X
	1800	460	447/9T	ROLLER	L469	449TTFS8039		E9	95.0	460	3234	51.69	H,RB,17
450	3600	460	5011S	BALL	E280	-----		E9	96.2	480	5300	67.19	H
	1800	460	447/9T	BALL	E292	449TTFS6065		E9	96.5	515	3645	56.71	H,X

Blue shaded areas are Cast Iron Frames

★ Stock Model

Footnotes:

- A NEMA Design A
- H Class H Insulation
- RB Roller Bearing on shaft end for belted loads only
- X XRI, Ultra High Efficiency Design
- YD 12 Leads for WYE-DELTA, Part Winding, or across-the-line starting
- 17 1.0 Service Factor
- 20 Rated 60/50 hertz, 190/380 or 380 volt at next lower horsepower

General Purpose, Three Phase

Blue Chip®, Totally Enclosed, Rigid Base



Applications: General purpose use on pumps, fans, blowers, compressors, conveyors, and other industrial machinery installed in damp, dusty, or dirty environments. Additionally, cast iron frame motors may be suitable for the process industries.

- Features:**
- 1.15 Service factor
 - Nameplated 60/50 hertz at next lowest horsepower
 - Motors accept C-face kits as shown in table on page 41
 - Severe duty kits available, see Accessories section
 - Cast iron motors feature: shaft slinger, regreasable bearings (182T and larger), lead lugs (364T and larger), and bearing caps on 444T and larger
 - UL Recognized and CSA Certified



Suitable for use on VFD per guidelines on page 13.

THREE PHASE

HP	RPM	VOLTS	FRAME	BRGS.	CAT. NO.	MODEL NO.	MULT. SYMB.	NOM. EFF.	F.L. AMPS	WGHT. LBS.	"C" DIM.	FOOT NOTES
3/4	1200	208-230/460	143T	BALL	H457★	143TTFN8076	E6	74.0	3.1-3.2/1.6	46	12.04	20
1	1800	200	143T	BALL	E825	143TTTN4028	E1	82.5	3.7	53	10.43	N
	1800	208-230/460	143T	BALL	E826★	143TTTC4026	E1	85.5	3.2-3.0/1.5	51	10.43	DS,N,20
	1800	575	143T	BALL	E828	143TTTN4030	E1	82.5	1.3	57	10.43	N
	1200	230/460	145T	BALL	E829★	145TTTN4076	E1	80.0	3.4/1.7	57	11.43	N,20
	900	230/460	182T	BALL	L409★	182TTFS8101	E6	72.0	4.0/2.0	83	14.81	20
1 1/2	3600	200	143T	BALL	E831	143TTTN4003	E1	86.5	4.5	59	10.43	N
	3600	208-230/460	143T	BALL	E833★	143TTTN4001	E1	82.5	4.4-4.0/2.0	51	10.43	N,20
	3600	575	143T	BALL	E835★	143TTTN4005	E1	86.5	1.6	42	10.43	N
	1800	200	145T	BALL	U601	145TTTN4032	E1	84.0	5.1	62	11.43	N
	1800	208-230/460	145T	BALL	E837★	145TTTC4026	E1	84.0	4.6-4.2/2.1	58	11.43	DS,N,20
	1800	575	145T	BALL	E839	145TTTN4035	E1	84.0	1.8	62	11.43	N
	1200	230/460	182T	BALL	E823★	182TTFS4076	E1	85.5	5.0/2.5	89	14.81	20
	900	230/460	184T	BALL	L410★	184TTFS8102	E6	74.0	5.8/2.9	94	15.81	20
2	3600	200	145T	BALL	E841	145TTTN4003	E1	86.5	6.0	68	11.43	N
	3600	208-230/460	145T	BALL	E842★	145TTTN4001	E1	84.0	5.8-5.4/2.7	64	11.43	N,20
	3600	575	145T	BALL	E844	145TTTN4005	E1	86.5	2.1	66	11.43	N
	1800	200	145T	BALL	U606	145TTTN4030	E1	85.5	6.6	64	11.43	N
	1800	208-230/460	145T	BALL	E846★	145TTTC4027	E1	84.0	6.0-5.6/2.8	63	11.43	DS,N,20
	1800	575	145T	BALL	E848★	145TTTN4040	E1	85.5	2.4	65	11.43	N
	1200	230/460	184T	BALL	E849★	184TTFS4076	E1	86.5	6.0/3.0	98	15.81	20
	900	230/460	213T	BALL	L411★	213TTFS8103	E6	75.5	8.2/4.1	153	18.22	20
3	3600	208-230/460	182T	BALL	U602★	182TTFS4001	E1	85.5	8.6-7.4/3.7	91	14.81	20
	3600	575	182T	BALL	U604	182TTFS4005	E1	85.5	3.0	81	14.81	
	1800	208-230/460	182T	BALL	U607★	182TTFC4026	E1	87.5	8.4-7.6/3.8	105	14.81	DS,20
	1800	575	182T	BALL	U609★	182TTFS4030	E1	87.5	3.4	98	14.81	
	1200	230/460	213T	BALL	U610★	213TTFS4076	E1	87.5	8.8/4.4	155	18.20	d,20
	1200	208-230/460	213T	BALL	U610★	213TTFC4076	E1	89.5	9.8-9.4/4.7	148	18.19	DS
	900	230/460	215T	BALL	L421★	215TTFS8101	E6	81.5	11.4/5.7	151	19.72	20
5	3600	208-230/460	184T	BALL	U613★	184TTFS4001	E1	87.5	13.0-12.4/6.2	107	15.81	20
	3600	575	184T	BALL	U615★	184TTFS4005	E1	87.5	5.0	106	15.81	
	1800	208-230/460	184T	BALL	U618★	184TTFC4026	E1	87.5	14.0-13.0/6.5	112	15.81	DS,20
	1800	575	184T	BALL	U620★	184TTFS4030	E1	87.5	5.2	89	15.81	
	1200	230/460	215T	BALL	U621★	215TTFS4076	E1	88.5	13.8/6.9	175	19.70	d,20
	1200	208-230/460	215T	BALL	U621★	215TTFC4076	E1	89.5	16.2-16.0/8.0	176	19.61	DS
	900	230/460	254T	BALL	L412★	254TTFPA8102	E6	84.0	17.0/8.5	325	23.69	20
7 1/2	3600	230/460	213T	BALL	U624★	213TTFS4001	E1	88.5	19.0/9.5	128	18.20	20
	3600	575	213T	BALL	U671★	213TTFS4005	E1	88.5	7.2	197	18.20	
	1800	208-230/460	213T	BALL	U629★	213TTFC4026	E1	89.5	21.0-19.0/9.5	160	18.20	DS,20
	1800	575	213T	BALL	U631★	213TTFS4030	E1	89.5	8.0	220	18.20	
	1200	230/460	254T	BALL	U633★	254TTFNA4076	E1	89.5	20.4/10.2	213	23.52	d,A,20
	1200	208-230/460	254T	BALL	U633★	254TTFC4076	E1	89.5	21.0-20.0/10.0	250	23.19	DS
	900	230/460	256T	BALL	L413★	256TTFPA8102	E6	85.0	24.0/12.0	415	25.44	20

Blue shaded areas are Cast Iron Frames

★ Stock Model

Catalog numbers (Cat No.) highlighted in bold blue have efficiency levels that meet or exceed U.S. EPA act and/or NRCAN Canadian standards.

Footnotes:

- d To be discontinued after current stock is gone
- A NEMA Design A

- DS Sourced
- N Totally Enclosed, Non-Ventilated
- 20 Rated 60/50 hertz, 190/380 or 380 volt at next lower horsepower

Continued on next page.

General Purpose, Three Phase

Blue Chip®, Totally Enclosed, Rigid Base

HP	RPM	VOLTS	FRAME	BRGS.	CAT. NO.	MODEL NO.		MULT. SYMB.	NOM. EFF.	F.L. AMPS	WGHT. LBS.	"C" DIM.	FOOT NOTES
10	3600	230/460	215T	BALL	U636 ★	215TTFS4001		E1	89.5	24.0/12.0	165	19.70	20
	3600	575	215T	BALL	U637	215TTFS4005		E1	89.5	9.6	184	19.70	
	1800	208-230/460	215T	BALL	U639 ★	215TTFC4026		E1	89.5	28.4-25.6/12.8	180	19.70	DS,20
	1800	575	215T	BALL	U641 ★	215TTFS4030		E1	89.5	10.0	197	19.70	
	1200	230/460	256T	BALL	U642 ★	256TTFNA4076		E1	89.5	26.0/13.0	365	25.27	d,20
	1200	208-230/460	256T	BALL	U642 ★	256TTFC4076		E1	89.5	28.3-26.2/13.1	277	24.92	DS
	900	230/460	284T	BALL	L414★	284TTFP8102		E6	85.5	31.0/15.5	360	26.26	20
15	3600	230/460	254T	BALL	U644 ★	254TTFPA4001		E1	90.2	36.0/18.0	189	23.69	20
	3600	575	254T	BALL	U638	254TTFPA4005		E1	90.2	14.4	260	23.69	
	1800	230/460	254T	BALL	U647 ★	254TTFC4026		E1	91.0	38.0/19.0	324	23.69	DS,20
	1800	575	254T	BALL	U648 ★	254TTFNA4030		E1	91.0	15.6	341	23.52	
	1200	230/460	284T	BALL	E978 ★	284TTFNA4076		E1	90.2	40.0/20.0	568	26.34	d,20
	1200	208-230/460	284T	BALL	E978 ★	284TTFC4076		E1	90.2	44.7-40.4/20.2	359	26.26	DS
	900	230/460	286T	BALL	L415★	286TTFP8102		E6	86.5	45.0/22.5	342	27.76	20
20	3600	230/460	256T	BALL	U649 ★	256TTFNA4001		E1	90.2	47.0/23.5	334	25.27	20
	3600	575	256T	BALL	U650	256TTFNA4005		E1	90.2	18.8	310	25.27	
	1800	230/460	256T	BALL	U652 ★	256TTFC4026		E1	91.0	51.0/25.5	376	25.44	DS,20
	1800	575	256T	BALL	U653 ★	256TTFNA4030		E1	91.0	20.0	341	25.27	
	1200	230/460	286T	BALL	E968 ★	286TTFN4076		E1	90.2	54.0/27	425	27.88	d,20
	1200	208-230/460	286T	BALL	E968 ★	286TTFC4076		E1	90.2	58.2-52.6/26.3	408	27.83	DS
	900	230/460	324T	BALL	L416★	324TTFPA8104		E6	87.5	64.0/32.0	586	28.82	20
25	3600	230/460	284TS	BALL	E975 ★	284TSTFPA4001		E1	91.0	60.0/30.0	392	24.89	20
	3600	575	284TS	BALL	U654	284TSTFPA4005		E1	91.0	24.0	545	24.89	
	1800	208-230/460	284T	BALL	E961 ★	284TTFC4026		E1	92.4	64.0-58.0/29.0	478	26.44	DS,20
	1800	208-230/460	284TS	BALL	E999 ★	284TSTFPA4036		E1	92.4	68.0-63.0/31.5	324	24.89	20
	1800	575	284T	BALL	E800 ★	284TTFPA4030		E1	92.4	24.8	324	26.27	
	1800	200	284T	BALL	U655	284TTFPA4028		E1	92.4	71.0	368	31.87	
	1200	230/460	324T	BALL	E820 ★	324TTFPA4076		E1	91.7	67.0/33.5	483	28.97	20
30	900	230/460	326T	BALL	L417★	326TTFPA8107		E6	88.5	78.0/39.0	602	30.32	20
	3600	230/460	286TS	BALL	E964 ★	286TSTFPA4001		E1	91.0	72.0/36.0	430	26.39	20
	3600	575	286TS	BALL	E819 ★	286TSTFPA4005		E1	91.0	28.0	476	26.44	
	1800	208-230/460	286T	BALL	E983 ★	286TTFC4026		E1	92.4	77.0-70.0/35.0	500	27.94	DS,20
	1800	208-230/460	286TS	BALL	E818 ★	286TSTFP4036		E1	92.4	81.0-74.0/37	432	26.44	20
	1800	575	286T	BALL	E817 ★	286TTFPA4030		E1	92.4	29.6	320	27.76	
	1200	230/460	326T	BALL	E966 ★	326TTFS4080		E1	91.7	76.0/38.0	691	30.37	20
40	900	460	364T	BALL	L420★	364TTFS8101		E6	91.0	44.0	916	31.50	20
	3600	230/460	324TS	BALL	E971 ★	324TSTFPA4001		E1	91.7	95.0/47.5	520	27.47	20
	1800	230/460	324T	BALL	E984 ★	324TTFPA4026		E1	93.0	100/50.0	635	28.97	20
	1800	230/460	324TS	BALL	E816 ★	324TSTFPA4036		E1	93.0	100/50.0	525	27.47	20
	1800	575	324T	BALL	E815 ★	324TTFPA4030		E1	93.0	40.0	555	28.97	
	1200	230/460	364T	BALL	E988 ★	364TTFS4086		E1	93.0	102/51.0	888	31.50	20
	900	460	365T	BALL	L425★	365TTFS8115		E6	91.0	55.5	970	32.5	20
50	3600	230/460	326TS	BALL	E976 ★	326TSTFPA4001		E1	92.4	114/57.0	540	28.82	20
	1800	230/460	326T	BALL	E962 ★	326TTFC4026		E1	93.0	117/58.5	655	30.32	DS,20
	1800	230/460	326TS	BALL	E801 ★	326TSTFPA4036		E1	93.0	122/61.0	710	28.97	20
	1800	575	326T	BALL	U659 ★	326TTFPA4030		E1	93.0	48.8	589	30.47	
	1200	230/460	365T	BALL	E993 ★	365TTFS4086		E1	93.0	124/62.0	967	32.50	20
	900	460	404T	BALL	L426★	404TTFS8102		E6	92.4	69.0	1191	35.62	20
	60	3600	230/460	364TS	BALL	E960 ★	364TSTFS4001		E1	93.0	141/70.5	1135	29.38
1800		230/460	364T	BALL	E985 ★	364TTFC4036		E1	93.0	137/68.5	1016	31.50	DS,20
1800		230/460	364TS	BALL	E802 ★	364TSTFS4026		E1	93.6	144/72.0	945	29.38	20
1800		575	364T	BALL	U660 ★	364TTFS4040		E1	93.6	58.0	952	31.50	
1200		230/460	404T	BALL	E803 ★	404TTFS4086		E1	93.6	144/72.0	1188	35.62	20
900		460	405T	BALL	L427★	405TTFS8114		E6	91.7	81.0	1340	37.12	20
75		3600	230/460	365TS	BALL	E991 ★	365TSTFS4001		E1	93.0	174/87.0	997	30.38
	1800	230/460	365T	BALL	E957 ★	365TTFS4036		E1	94.1	171/86.0	1106	32.50	20
	1800	230/460	365TS	BALL	E804 ★	365TSTFS4026		E1	94.1	178/89.0	1026	30.38	
	1800	575	365T	BALL	E805 ★	365TTFS4040		E1	94.1	71.0	1035	32.50	
	1200	230/460	405T	BALL	E806 ★	405TTFS4086		E1	93.6	182/91.0	1298	37.12	20
	900	460	444T	BALL	L428★	444TTFS8106		E6	93.0	97.0	1820	41.25	20

Blue shaded areas are Cast Iron Frames

★ Stock Model

Catalog numbers (Cat No.) highlighted in bold blue have efficiency levels that meet or exceed U.S. EPA and/or NRC Canadian standards.

Footnotes:

d To be discontinued after current stock is gone

DS Sourced

20 Rated 60/50 hertz, 190/380 or 380 volt at next lower horsepower

89 Threaded NPT opening in conduit box

Continued on next page.

General Purpose, Three Phase

Blue Chip®, Totally Enclosed, Rigid Base

HP	RPM	VOLTS	FRAME	BRGS.	CAT. NO.	MODEL NO.		MULT. SYMB.	NOM. EFF.	F.L. AMPS	WGHT. LBS.	"C" DIM.	FOOT NOTES
100	3600	230/460	405TS	BALL	E807 *	405TSTFS4001		E1	94.1	220/110	1239	34.12	20,89
	1800	230/460	405T	BALL	E959 *	405TTFS4036		E1	94.5	228/114	1277	37.12	20
	1800	230/460	405TS	BALL	E808 *	405TSTFS4026		E1	94.5	228/114	1273	34.12	20
	1800	575	405T	BALL	U661 *	405TTFS4040		E1	94.5	91.0	1267	37.12	
	1200	230/460	444T	BALL	E809 *	444TTFS4086		E1	94.1	238/119	1819	41.25	20
	900	460	445T	BALL	L429*	445TTFN8115		E6	93.6	133	2377	43.19	20
125	3600	460	444TS	BALL	E992 *	444TSTFS4001		E1	94.5	137	1731	37.50	PW
	1800	460	444T	BALL	E987 *	444TTFS4036		E1	94.5	142	1805	41.25	PW,20
	1800	460	444TS	BALL	E810 *	444TSTFS4026		E1	94.5	142	1787	37.50	
	1800	575	444T	BALL	U662 *	444TTFS4040		E1	94.5	114	1826	41.25	
	1200	460	445T	BALL	U663 *	445TTFN4086		E1	94.1	155	2082	43.19	
	900	460	445T	ROLLER	L440*	445TTFN8102		E6	93.6	169	2377	43.19	H,RB,20
150	3600	460	445TS	BALL	E981 *	445TSTFN4001		E1	95.0	167	2191	39.44	
	1800	460	445T	BALL	E986 *	445TTFN4036		E1	95.0	172	2116	43.19	20
	1800	460	445TS	BALL	E811 *	445TSTFN4026		E1	95.0	172	2070	39.44	
	1200	460	445T	ROLLER	E958 *	445TTFN4087		E1	95.0	182	2275	43.19	H,RB
	900	460	447/9T	ROLLER	L442*	449TTFS8111		E6	94.5	206	2967	51.69	H,RB,20
200	3600	460	445TS	BALL	E812 *	445TSTFN4005		E1	95.0	222	2262	39.44	H
	1800	460	445T	ROLLER	E989 *	445TTFN4038		E1	95.0	225	2287	43.19	RB,20
	1800	460	445TS	BALL	E813 *	445TSTFN4028		E1	95.0	225	2215	39.44	
	1800	575	445T	BALL	U667 *	445TTFN4049		E1	95.0	180	2311	43.19	
	1800	460	445T	BALL	U669 *	445TTFN4059		E1	95.0	225	2287	43.19	20
	1200	460	447/9T	ROLLER	E814 *	449TTFS4088		E1	95.0	243	2740	51.69	H,RB,YD
	900	460	447/9T	ROLLER	L449*	449TTFS8110		E6	94.5	270	3389	51.69	H,RB,YD,20
250	3600	460	445TS	BALL	L450	445TSTFN8007		E9	94.5	275	2266	39.44	H,17,20
	3600	460	447/9TS	BALL	L451*	449TSTFS8003		E9	95.0	280	2279	47.88	H,YD,20
	1800	460	445T	ROLLER	L452*	445TTFN8040		E9	95.0	285	2395	43.19	H,RB,YD,20
	1800	460	447/9T	BALL	L455	449TTFS8028		E9	95.0	290	2802	51.69	H,YD,20
	1800	460	447/9T	ROLLER	L454*	449TTFS8038		E9	95.0	290	2775	51.69	H,RB,YD,20
	1800	575	445T	ROLLER	L453	445TTFN8041		E9	95.0	228	2394	43.19	RB
	1200	460	447/9T	ROLLER	L456*	449TTFS8087		E9	95.4	300	3394	51.69	H,RB,YD,20
	1200	460	447/9T	BALL	L457	449TTFS8077		E9	95.4	300	3092	51.69	H,YD,20
	900	460	447/9T	ROLLER	L458	449TTFS8113		E6	94.5	340	3248	51.69	H,RB,YD,17
300	3600	460	447/9TS	BALL	L459*	449TSTFS8002		E9	95.4	330	2702	47.88	H,YD,20
	1800	460	445T	ROLLER	L460*	445TTFN8042		E9	95.0	340	2410	43.19	H,RB,YD,17
	1800	460	447/9T	ROLLER	L462*	449TTFS8037		E9	95.4	338	2960	51.69	H,RB,YD,20
	1800	460	447/9T	BALL	L463	449TTFS8027		E9	95.4	338	3041	51.69	H,YD,20
	1800	575	445T	ROLLER	L461	445TTFN8043		E9	95.0	272	2428	43.19	H,RB,YD,17
	1200	460	447/9T	BALL	L465*	449TTFS8076		E9	95.4	351	3440	51.69	H,YD,17,20
	1200	460	447/9T	ROLLER	L464*	449TTFS8086		E9	95.4	357	3428	51.69	H,RB,YD,17,20
350	3600	460	447/9TS	BALL	L466*	449TSTFS8001		E9	95.4	385	3057	47.88	H,YD
	1800	460	447/9T	ROLLER	L467*	449TTFS8036		E9	95.4	400	3202	51.69	H,RB,YD
400	1800	460	447/9T	BALL	E291	-----		E9	95.8	460	3850	56.71	H,X
	1800	460	447/9T	ROLLER	L469	449TTFS8039		E9	95.0	460	3234	51.69	H,RB,17
450	1800	460	447/9T	BALL	E292	449TTFS6065		E9	96.2	517	4050	56.71	H,X

Blue shaded areas are Cast Iron Frames

★ Stock Model

Catalog numbers (Cat No.) highlighted in bold blue have efficiency levels that meet or exceed U.S. EPA and/or NRC Canadian standards.

Footnotes:

- H Class H Insulation
- PW Part Winding Start Capability
- RB Roller Bearing on shaft end for belted loads only
- X XRI, Ultra High Efficiency Design
- YD 12 Leads for WYE-DELTA, Part Winding on low voltage, or across-the-line starting
- 17 1.0 Service Factor
- 20 Rated 60/50 hertz, 190/380 or 380 volt at next lower horsepower
- 89 Threaded NPT opening in conduit box

Blue Chip® Totally Enclosed C-Face Kits

CAT. NO.	FRAME	KIT NO.	MULT. SYMB.	COMMENTS	FOOT NOTES
A603	143T-145T	KIT 143TCFN	S4	Use on 143T Frame with TTFN, TTTC, or TTTN in model number	75
A655	143T-145T	KIT 145TCFN	S4	Use on 145T Frame with TTFN, TTTC, or TTTN in model number	75
A644	182T-184T	KIT 180CF8.5-1	S4	Use on 182T and 184T Frames (8-1/2" AK) with TTFS in model number, 182TTFC4026 and 184TTFC4026	75
A206	213T - 215T	KIT 210TCFS	S4	Use on 213T and 215T Frames with TTFS in model number, 213TTFC4026 and 215TTFC4026	75
A652	213T - 215T	KIT 175068	S4	Use on model numbers 213TTFC4076 and 215TTFC4076	
A239	254T - 256T	KIT 250TCFPA	S4	Use on 254T and 256T Frames with TTFPA in model number	75
A284	254T - 256T	KIT 250TCFNA	S4	Use on 254T and 256T Frames with TTFNA in model number	
A601	254T - 256T	KIT 250TCFPA	S4	Use on model numbers 254TTFC4026 and 256TTFC4026	
A653	254T - 256T	KIT 175191	S4	Use on model numbers 254TTFC4076 and 256TTFC4076	
A611	284T-286T/TS	KIT 280TCFP	S4	Use on 284T/TS and 286T/TS Frames with TTFP in model number, 284TTFC4026 and 286TTFC4026	
A618	284T-286T/TS	KIT 280TCFNA	S4	Use on 284T/TS and 286T/TS Frames with TTFNA in model number	
A617	284T-286T/TS	KIT 280TCFPA	S4	Use on 284T/TS and 286T/TS Frames with TTFPA in model number	
A654	284T-286T	KIT 175061	S4	Use on model numbers 284TTFC4076 and 286TTFC4076	
A619	324T-326T/TS	KIT 320TCFPA	S4	Use on 324T/TS and 326T/TS Frame with TTFPA in model number	
A214	324T-326T/TS	KIT 320TCFS	S4	Use on 324T/TS and 326T/TS Frames with TTFS in model number	
A395	364T-365T	KIT 360TFSR	S4	Use on 364T and 365T Frames with TTFS in model number	
A217	364T-365T	KIT 360TFS	S4	Use on 364T and 365T Frames with TTFC in model number	
A396	364TS-365TS	KIT 360TSCFSR	S4	Use on 364TS and 365TS Frames with TSTFS in the model number	
A223	404T-405T	KIT 400TCFS	S4	Use on 404T and 405T Frames with TTFS in the model number	
A226	404TS-405TS	KIT 400TSCFS	S4	Use on 404TS and 405TS Frames with TTFS in the model number	
A229	444T	KIT 440TCFS	S4	Use on 444T Frame with TTFS in the model number	
A620	445T	KIT 440TCFN	S4	Use on 445T Frame with TTFN in the model number	
A232	444TS	KIT 440TSCFS	S4	Use on 444TS Frame with TSTFS in the model number	
A621	445TS	KIT 440TSCFN	S4	Use on 445TS Frame with TSTFN in the model number	
A623	447/449T	KIT 449TCFS	S4	Use on 447/449T Frame with TTFS in the model number	
A624	447/449TS	KIT 449TSCFS-1	S4	Use on 447/449T Frame with TSTFS in the model number	
A625	447/449TS	KIT 449TSCFS-2	S4	Use on 447/449T Frame with TTFS in the model number	

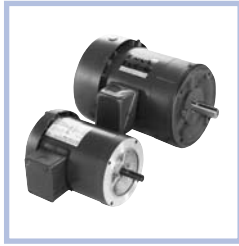
THREE PHASE

Footnotes:

75 Addition of C-Face kits may result in non-NEMA "BA" dimension. For the resulting "BA" dimension, consult chart found in the Modification Section.

General Purpose, Three Phase

Totally Enclosed, C-Face



Applications: General purpose use on gear reducers, pumps, machine tools, and other direct-coupled equipment installed in damp, dusty, or dirty environments. Additionally, cast iron frame motors may be suitable for the process industries.

- Features:**
- Ball bearings, mechanically locked on shaft end
 - 1.15 Service factor
 - Rolled steel 56-145T frame motors accept brake kits, see Accessories section
 - UL Recognized and CSA Certified



Suitable for use on VFD per guidelines on page 13.

HP	RPM	VOLTS	FRAME	CAT. NO.	MODEL NO.		MULT. SYMB.	NOM. EFF.	F.L. AMPS	WGHT. LBS.	"C" DIM.	FOOT NOTES
1/4	1800	208-230/460	56C	G547*	56T17F2042		F1	62.0	1.2-1.3/0.65	14	9.94	20,24
	1800	575	56C	K405	56T17F2047		F1	62.0	0.52	13	9.94	24
	1200	208-230/460	56C	K401	-----		F1	52.5	1.7-2.0/1.0	18	11.32	20
1/3	3600	208-230/460	56C	P101*	56T34T5306		F1	64.0	1.7-2.0/1.0	19	9.94	N,20
	1800	208-230/460	56C	G502*	56T17F2041		F1	68.0	1.5-1.6/0.8	15	10.19	20,24
	1800	575	56C	G503*	56T17F2048		F1	68.0	0.64	15	10.19	24
	1200	208-230/460	56C	K402	-----		F1	62.0	1.9-2.2/1.1	21	11.82	20
1/2	3600	208-230/460	56C	P102*	56T34F5321		F1	66.0	2.1-2.2/1.1	22	11.82	20
	1800	208-230/460	56C	G507*	56T17F2036		F1	68.0	2.1-2.2/1.1	17	10.69	20,24
	1800	575	56C	G508*	56T17F2049		F1	68.0	0.90	18	10.69	24
	1200	208-230/460	56C	K403	-----		F1	68.0	2.4-2.7/1.3	23	11.82	20
3/4	3600	208-230/460	56C	P103*	56T34F5322		F1	72.0	3.0-3.2/1.6	22	11.82	20
	1800	208-230/460	56C	G522*	56T17F2038		F1	75.5	2.7-2.8/1.4	21	11.19	20,24
	1800	575	56C	G523*	56T17F2050		F1	75.5	1.1	21	11.19	24
	1200	208-230/460	56C	K404	56T11F5320		F1	74.0	3.1-3.2/1.6	26	12.32	20
1	3600	208-230/460	56C	P104*	56T34F5323		F1	74.0	3.7-3.7/1.85	24	11.82	20
	1800	208-230/460	56C	G527*	56T17F5310		F1	77.0	3.5-3.6/1.8	26	12.32	20
	1800	208-230/460	143TC	C220*	143TTFR5329		E6	77.0	3.5-3.6/1.8	28	12.37	20
	1800	575	56C	G528*	56T17F5319		F1	77.0	1.45	25	12.32	
	1800	575	143TC	C230	143TTFR5333		E6	77.0	1.45	26	12.37	
	1200	208-230/460	145TC	C250	145TTFR5378		E6	77.0	3.9-4.0/2.0	33	12.87	20
	1200	208-230/460	56C	K407	56T11F5321		F1	77.0	3.9-4.0/2.0	33	12.32	20
1 1/2	3600	208-230/460	56C	P105*	56T34F5324		F1	80.0	4.7-4.6/2.3	25	11.82	20
	3600	208-230/460	143TC	C201*	143TTFR5302		E6	80.0	4.7-4.6/2.3	27	11.87	20
	1800	208-230/460	56C	G541*	56T17F5311		F1	80.0	4.8-4.8/2.4	29	12.32	20
	1800	208-230/460	145TC	C221*	145TTFR5332		E6	80.0	4.8-4.8/2.4	31	12.37	20
	1800	575	56C	G548*	56T17F5320		F1	80.0	1.9	31	12.32	
	1800	575	145TC	C231	145TTFR5340		E6	80.0	1.9	29	12.37	
	1200	230/460	182TC	C251	182TTFR7094		E6	75.5	5.0/2.5	89	16.93	F
2	3600	208-230/460	56C	P106*	56T34F5325		F1	80.0	6.0-6.0/3.0	29	12.32	20
	3600	208-230/460	145TC	C202*	145TTFR5302		E6	80.0	6.0-6.0/3.0	30	12.37	20
	1800	208-230/460	56C	G544*	56T17F5312		F1	82.5	6.0-5.8/2.9	39	13.82	20
	1800	208-230/460	145TC	C222*	145TTFR5334		E6	82.5	6.0-5.8/2.9	39	13.87	20
	1800	575	56C	G549*	56T17F5329		F1	82.5	2.25	41	13.82	
	1800	575	145TC	C232	145TTFR5341		E6	82.5	2.25	41	13.87	
	1200	230/460	184TC	C252	184TTFR7082		E6	80.0	6.8/3.4	89	15.69	F
3	3600	208-230/460	56C	P107*	56T34F5326		F1	84.0	8.4-7.6/3.8	39	13.32	20
	3600	208-230/460	145TC	C236*	145TTFR5307		E6	84.0	8.4-7.6/3.8	40	13.37	20
	3600	208-230/460	182TC	C203*	182TTFR7325		E6	82.5	8.3-7.8/3.9	72	15.69	F
	1800	208-230/460	182TC	C223*	182TTFR7634		E6	82.5	9.0-8.0/4.0	76	15.69	F
	1800	230/460	56C	K406*	56T17F5328		F1	84.0	8.6/4.3	48	14.82	F,17,20
	1800	230/460	145TC	C260	145TTFR5344		E6	84.0	8.6/4.3	47	14.87	17,20
	1200	230/460	213TC	C253	213TTFW7096		E6	81.5	9.6/4.8	108	19.46	F,20

* Stock Model

Footnotes:

- F Class F Insulation
- N Totally Enclosed, Non-Ventilated
- 17 1.0 Service Factor
- 20 Rated 60/50 hertz, 190/380 or 380 volt at next lower horsepower
- 24 Motor will NOT accept a Brake Kit

Continued on next page.

General Purpose, Three Phase

Totally Enclosed, C-Face

HP	RPM	VOLTS	FRAME	CAT. NO.	MODEL NO.		MULT. SYMB.	NOM. EFF.	F.L. AMPS	WGHT. LBS.	"C" DIM.	FOOT NOTES
5	3600	208-230/460	184TC	C204★	184TTFR8002		E6	84.0	13.4-12.0/6	84	16.69	F
	1800	208-230/460	184TC	C224★	184TTFR8641		E6	86.5	14.0-13.0/6.5	92	16.69	F,20
	1200	208-230/460	215TC	C254	215TTFW7096		E6	84.0	16.0-14.8/7.4	164	20.96	20
7 1/2	3600	208-230/460	184TC	C238★	184TTFR8617		E6	85.5	20.0-19.0/9.5	72	16.69	F
	3600	208-230/460	213TC	C205★	213TTFW7007		E6	84.0	21.0-19.2/9.6	95	19.46	F,20
	1800	208-230/460	213TC	C225★	213TTFW7046		E6	87.5	22.0-19.4/9.7	103	19.46	F,20
	1200	230/460	254TC	C255	254TTFL5082		E6	82.5	20.8/10.4	148	23.24	AL,F
10	3600	208-230/460	215TC	C206★	215TTFW7302		E6	86.5	27.0-24.0/12.0	102	20.96	F,20
	1800	208-230/460	215TC	C226★	215TTFW7046		E6	88.5	27.6-25.0/12.5	129	20.96	F,20
	1200	230/460	256TC	C256	256TTFPA7694		E6	84.0	27.6/13.8	268	25.94	F
15	3600	208-230/460	215TC	C237★	215TTFW7021		E6	88.5	40.0-37.0/18.5	125	20.96	20
	3600	230/460	254TC	C207★	254TTFL5020		E6	85.5	36.0/18.0	196	23.24	AL,F
	1800	208-230/460	254TC	C227★	254TTFL5040		E6	88.5	41.0-38.6/19.3	179	23.24	AL,F
	1200	230/460	284TC	C257	-----		E6	86.5	40.8/20.4	417	26.44	F

Blue shaded areas are Cast Iron Frames

★ Stock Model

THREE PHASE

Footnotes:

- AL Aluminum Frame Construction
- F Class F Insulation
- 20 Rated 60/50 hertz, 190/380 or 380 volt at next lower horsepower

General Purpose, Three Phase

Totally Enclosed C-Face With Rigid Base and C-Face With Removable Base (Four-In-One)



Applications: General purpose use on gear reducers, pumps, machine tools, and other direct-coupled equipment installed in damp, dusty or dirty environments. The Four-In-One motors have a unique design allowing for replacement of Dripproof, TEFC, C-Face, or Rigid Base motors in a broad range of industrial or commercial applications.

- Features:**
- Ball bearings, mechanically locked on shaft end
 - 1.15 Service factor
 - Class F insulation except as footnoted
 - Rated 60/50 hertz, 190/380 or 380 volt, at next lower horsepower as footnoted
 - 56-145T frame motors, accept brake kits, see page 45 or Accessories section
 - UL Recognized and CSA Certified

◆ **Additional features for "Four-In-One" motors only:**

- CR²⁰⁰ Corona resistant magnet wire
- Bolt-on, removable rigid base
- Suitable for horizontal and vertical mounting
- Will accept drip cover kits, see page 45 Accessories section

Suitable for use on VFD per guidelines on page 13.

HP	RPM	VOLTS	FRAME	"FOUR-IN-ONE"	CAT. NO.	MODEL NO.	MULT. SYMB.	NOM. EFF.	F.L. AMPS	WGHT. LBS.	"C" DIM.	FOOT NOTES
1/4	1800	208-230/460	56C		G565	56T17F2051	F1	62.5	1.2-1.4/0.7	14	9.94	b,13,24
	1200	208-230/460	56C	◆	G586★	56T11F5311	F2	52.5	1.7-2.0/1.0	20	11.31	6,13,20
1/3	3600	208-230/460	56C	◆	D390★	56T34T5303	F2	66.0	1.7-1.8/0.9	21	10.43	N6,13,20,24
	3600	575	56C	◆	K702★	56T34T5309	F2	64.0	.80	18	9.93	N,6,13,24
	1800	208-230/460	56C		G560	56T17F2052	F1	65.5	1.5-1.6/0.8	16	10.19	b,13,20,24
	1800	208-230/460	56C	◆	G580★	56T17T5305	F2	68.0	1.5-1.6/0.8	20	9.93	N6,13,20,24
	1800	575	56C	◆	K703★	56T17T5316	F2	68.0	.65	22	9.93	N,6,13,24
	1200	208-230/460	56C	◆	G587★	56T11F5310	F2	62.0	1.9-2.2/1.1	23	11.31	6,13,20
1/2	3600	208-230/460	56C		G569	56T34F5308	F1	66.0	2.1-2.2/1.1	23	11.81	b,13,20
	3600	208-230/460	56C	◆	D391★	56T34F5301	F2	66.0	2.1-2.2/1.1	22	11.81	6,13,20
	3600	575	56C	◆	K704★	56T34F5348	F2	66.0	0.9	22	11.81	6,13
	1800	208-230/460	56C		G561★	56T17F2039	F1	70.0	2.1-2.2/1.1	18	10.69	b,13,20,24
	1800	208-230/460	56C	◆	G581★	56T17F5321	F2	68.0	2.3-2.4/1.2	23	11.81	6,13,20
	1800	575	56C	◆	K705★	56T17F5336	F2	68.0	1.0	25	11.81	6,13
	1200	208-230/460	56C	◆	G588★	56T11F5309	F2	68.0	2.4-2.7/1.3	24	11.81	6,13,20
3/4	3600	208-230/460	56C	◆	D392★	56T34F5302	F2	68.0	3.0-3.2/1.6	23	11.81	6,13,20
	3600	575	56C	◆	K706★	56T34F5349	F2	68.0	1.3	24	11.81	6,13
	1800	208-230/460	56C		G562★	56T17F2040	F1	75.5	2.7-2.8/1.4	20	11.19	b,13,20,24
	1800	208-230/460	56C	◆	G582★	56T17F5322	F2	75.5	2.9-3.0/1.5	25	11.81	6,13,20
	1800	575	56C	◆	K707★	56T17F5337	F2	75.5	1.2	25	11.81	6,13
	1200	208-230/460	56C	◆	G589★	56T11F5308	F2	74.0	3.1-3.2/1.6	28	12.31	6,13,20
1	3600	208-230/460	56C		K803★	56T34F5310	F1	74.0	3.7-3.7/1.8	25	11.81	b,13,20
	3600	208-230/460	56C	◆	D393★	56T34F5303	F2	74.0	3.7-3.7/1.8	25	11.81	6,13,20
	3600	575	56C	◆	K708★	56T34F5350	F2	77.0	1.5	24	11.81	6,13
	1800	208-230/460	56C		G563★	56T17F5315	F1	77.0	3.5-3.6/1.8	28	12.31	b,13,20
	1800	230/460	143TC		U701★	143TTFR4032	E8	82.5	3.0/1.5	34	12.87	13,20
	1800	208-230/460	56HC	◆	G583★	56T17F5323	F2	77.0	3.5-3.6/1.8	28	12.31	5,6,13,20
	1800	575	56HC	◆	K709★	56T17F5338	F2	77.0	1.45	27	12.31	5,6,13
	1200	208-230/460	56HC	◆	K701★	56T11F5307	F2	77.0	3.95-4.0/2.0	33	12.81	5,6,13,20

◆ Four-In-One ★ Stock Model

Catalog numbers (Cat No.) highlighted in bold blue have efficiency levels that meet or exceed U.S. EPA and/or NRC Canadian standards.

Footnotes:

- b Class B Insulation
- N Totally Enclosed, Non-Ventilated
- 5 56H, 143T, and 145T Combination Base with 12 mounting holes
- 6 Bolt-on removable base for footless mounting option
- 13 F1 mounting only cannot reassemble to F2
- 20 Rated 60/50 Hertz, 190/380 or 380 volt at next lower horsepower
- 24 Motor will NOT accept a Brake Kit

Continued on next page.

General Purpose, Three Phase

Totally Enclosed C-Face With Rigid Base and C-Face With Removable Base (Four-In-One)

HP	RPM	VOLTS	FRAME	"FOUR-IN-ONE"	CAT. NO.	MODEL NO.		MULT. SYMB.	NOM. EFF.	F.L. AMPS	WGHT. LBS.	"C" DIM.	FOOT NOTES
1 1/2	3600	230/460	143TC		U733 *	143TTFR4010		E8	82.5	4.0/2.0	35	12.87	20
	3600	208-230/460	56C	◆	D394*	56T34F5304		F2	80.0	4.7-4.6/2.3	26	11.81	6,13,20
	3600	575	56C	◆	K721*	56T34F5351		F2	80.0	1.8	26	11.81	6,13
	1800	200	145TC		U703	145TTFR4046		E8	84.0	5.1	44	14.37	
	1800	208-230/460	56HC		G564*	56T17F5316		F1	80.0	4.8-4.8/2.4	31	12.31	b,5,13,20
	1800	230/460	145TC		U704 *	145TTFR4058		E8	84.0	4.4/2.2	44	14.37	20
	1800	575	145TC		U705	145TTFR4052		E8	84.0	1.8	44	14.37	6
	1800	208-230/460	56HC	◆	G584*	56T17F5324		F2	80.0	4.8-4.8/2.4	30	12.31	5,6,13,20
	1800	575	56HC	◆	K722*	56T17F5339		F2	80.0	1.9	31	12.31	5,6,13
	1200	230/460	56HC	◆	K700	56T11F5328		F2	77.5	5.8/2.9	42	12.82	5,6,13,17
2	3600	230/460	145TC		U735 *	145TTFR4009		E8	84.0	5.2/2.6	39	13.37	20
	3600	208-230/460	56HC	◆	D395*	56T34F5305		F2	80.0	6.0-6.0/3.0	30	12.31	5,6,13,20
	3600	575	56HC	◆	K723*	56T34F5352		F2	80.0	2.4	30	12.31	5,6,13
	1800	200	145TC		U706	145TTFR4070		E8	84.0	6.4	46	14.37	
	1800	208-230/460	56HC		K806	56T17F5330		F1	82.5	6.0-5.8/2.9	40	13.82	b,5,20
	1800	230/460	145TC		U707 *	145TTFR4040		E8	84.0	5.6/2.8	46	14.37	20
	1800	575	145TC		U708	145TTFR4126		E8	84.0	2.2	46	14.37	
	1800	208-230/460	56HC	◆	G585*	56T17F5325		F2	82.5	6.0-5.8/2.9	41	13.81	5,6,13,20
	1800	575	56HC	◆	K724*	56T17F5340		F2	82.5	2.25	41	13.81	5,6,13
	1200	230/460	184TC	◆	C380 *	184TTFR4380		E8	86.5	6.0/3.0	72	15.29	6,20
3	3600	200	182TC		U736	182TTFR4013		E8	85.5	8.5	76	15.69	
	3600	208-230/460	56HC	◆	D396*	56T34F5306		F2	84.0	8.4-7.6/3.8	41	13.31	5,6,13,20
	3600	575	56HC	◆	K725*	56T34F5353		F2	84.0	3.1	41	13.31	5,6,13
	3600	208-230/460	182TC	◆	C381 *	182TTFR4320		E8	85.5	8.2-7.4/3.7	76	15.69	F,6,20
	1800	230/460	56HCZ	◆	G590*	56T17F5355		F2	85.5	8.6/4.3	48	14.87	Z,5,6,13,17,20
	1800	575	56HCZ	◆	G591	56T17F5356		F2	85.5	3.4	48	14.87	Z,5,6,13,17
	1800	208-230/460	182TC	◆	C382 *	182TTFR4340		E8	87.5	9.0-8.4/4.2	77	15.50	6,20
	1800	575	182TC	◆	C383 *	182TTFR4345		E8	87.5	3.4	77	15.50	6
	1200	208-230/460	213TC	◆	C384 *	213TTFW4380		E8	87.5	9.6-9.2/4.6	106	20.97	6,20
5	3600	200	184TC		U738	184TTFR4013		E8	87.5	14.3	85	16.69	
	3600	208-230/460	184TC	◆	C385 *	184TTFR4320		E8	87.5	13.5-12.5/6.2	81	16.50	6,20
	1800	230/460	184TC	◆	C386 *	184TTFR4340		E8	87.5	13.0/6.5	87	16.50	6,20
	1800	575	184TC	◆	C387 *	184TTFR4345		E8	87.5	5.2	87	16.50	6
	1200	208-230/460	215TC	◆	C388 *	215TTFW4380		E8	87.5	15.0-14.0/7.0	143	20.97	6,13,20
7 1/2	3600	200	213TC		U740	213TTFW4007		E8	89.5	21.2	118	20.97	
	3600	575	213TC		U742	213TTFW4008		E8	89.5	7.4	118	20.97	
	3600	208-230/460	213TC	◆	C389 *	213TTFW4320		E8	89.5	20.0-18.5/9.2	114	20.97	6,20
	1800	208-230/460	213TC		U716 *	213TTFW4045		E8	89.5	21.6-20.0/10.0	117	19.47	d,20
	1800	208-230/460	213TC	◆	C390 *	213TTFW4340		E8	89.5	21.5-20.0/10.0	122	19.47	6,20
	1800	575	213TC	◆	C391 *	213TTFW4345		E8	89.5	8.0	122	19.47	6

◆ Four-In-One ★ Stock Model

Catalog numbers (Cat No.) highlighted in bold blue have efficiency levels that meet or exceed U.S. EPA and/or NRC Canadian standards.

Continued on next page.

Footnotes:

- b Class B Insulation
- d To be discontinued after current stock is gone
- 5 56H, 143T, and 145T Combination Base with 12 mounting holes
- 6 Bolt-on removable base for footless mounting option
- 13 F1 Mounting only cannot reassemble to F2
- 17 1.0 Service Factor
- 20 Rated 60/50 Hertz, 190/380 or 380 volt at next lower horsepower
- Z 56HZ with 7/8" shaft dia. 3-1/2" shaft height, and slotted 56 frame base

General Purpose, Three Phase

Totally Enclosed C-Face With Rigid Base
and C-Face With Removable Base (Four-In-One)

HP	RPM	VOLTS	FRAME	"FOUR-IN-ONE"	CAT. NO.	MODEL NO.		MULT. SYMB.	NOM. EFF.	F.L. AMPS	WGHT. LBS.	"C" DIM.	FOOT NOTES
10	3600	200	215TC		U743	215TTFW4013		E8	89.5	27.6	125	20.97	
	3600	208-230/460	215TC	◆	C392 ★	215TTFW4320		E8	89.5	27.0-24.0/12.0	128	20.97	6,20
	1800	200	215TC		U718	215TTFW4033		E8	89.5	29.9	128	20.97	
	1800	208-230/460	215TC	◆	C393 ★	215TTFW4340		E8	89.5	28.0-26.0/13.0	135	20.97	6,20
	1800	575	215TC	◆	C394 ★	215TTFW4345		E8	89.5	10.5	135	20.97	6
	1200	230/460	256TC		U757	256TTFL4079		E8	89.5	26.0/13.0	220	26.99	AL,20
15	3600	230/460	254TC		U746	254TTFL4004		E8	91.0	35.0/17.5	223	23.24	AL,20
	1800	200	254TC		U721	254TTFL4033		E8	91.0	46.0	189	23.24	AL
	1800	208-230/460	254TC		U722 ★	254TTFL4032		E8	91.0	42.0-40.0/20.0	173	23.24	AL,20
	1800	575	254TC		U723	254TTFL4035		E8	91.0	16.0	236	23.24	AL
20	3600	230/460	256TC		U748	256TTFL4004		E8	90.2	47.0/23.5	189	24.99	AL,20
	3600	230/460	256TC		U815 ★	256TTFNA14004		E8	90.2	47.0/23.5	265	25.76	20
	1800	208-230/460	256TC		U724 ★	256TTFL4032		E8	91.0	55.0-51.0/25.5	240	26.99	AL,20
25	3600	230/460	284TSC		U749 ★	284TSTFPA14003		E8	91.0	58.0/29.0	400	24.76	20
	1800	208-230/460	284TC		U725 ★	284TTFPA4027		E8	92.4	68.0-62.0/31.0	340	26.27	20
30	3600	230/460	286TSC		U750 ★	286TSTFPA14002		E8	91.0	72.0/36.0	440	26.26	20
	1800	208-230/460	286TC		U726 ★	286TTFPA4028		E8	92.4	81.0-74.0/37.0	535	27.77	20
40	3600	230/460	324TSC		U830 ★	324TSTFPA14003		E8	91.7	95.0/47.5	512	27.47	20
	1800	230/460	324TC		U727 ★	324TTFPA4028		E8	93.0	100/50.0	489	28.97	20
50	3600	230/460	326TSC		U834 ★	326TSTFPA14003		E8	92.4	115/57.5	615	28.97	20
	1800	230/460	326TC		U728 ★	326TTFPA4028		E8	93.0	122/61.0	600	30.47	20
60	3600	230/460	364TSC		U838 ★	364TSTFS14003		E8	93.0	141/70.5	971	29.38	20
	1800	230/460	364TC		U729 ★	364TTFS4038		E8	93.6	144/72.0	984	31.50	
75	3600	230/460	365TSC		U842 ★	365TSTFS14002		E8	93.0	174/87.0	1029	30.38	20
	1800	230/460	365TC		U730 ★	365TTFS4038		E8	94.1	178/89.0	1068	32.50	20
100	3600	230/460	405TSC		U845 ★	405TSTFS14002		E8	94.1	220/110	1294	34.12	20
	1800	230/460	405TC		U731 ★	405TTFS4038		E8	94.5	228/114	1297	37.12	20

Blue shaded areas are Cast Iron Frames ◆ Four-In-One ★ Stock Model

Catalog numbers (Cat No.) highlighted in bold blue have efficiency levels that meet or exceed U.S. EPA and/or NRC Canadian standards.

Brake Kits

TORQUE (LB-FT)	COIL VOLTAGE	CAT. NO.		MULT. SYMB.	WEIGHT
3	208-230/460	A301★		S4	7
	575	A297★		S4	7
6	208-230/460	A302★		S4	7
	575	A298★		S4	7
10	208-230/460	A303★		S4	10
	575	A299★		S4	10

Drip Cover Kits (Four-In-One)

CAT. NO.	FRAME	MULT. SYMB.
A234★	56-143T-145T	S4
A197★	182T-184T	S4
A199★	213T-215T	S4

Footnotes:

- AL Aluminum Frame Construction
- 6 Bolt-on removable base for footless mounting option
- 20 Rated 60/50 Hertz, 190/380 or 380 volt at next lower horsepower