

MOTORIZED REDUCER RATINGS (TEFC, 3 PHASE, 230/460 VOLT MOTORS)

1750 RPM Input Speed								
HP	Output Speed	Output Torque	Overhung Load	Ratio	Service Factor	Gear Stages	Model	
							Motor	Gear
1/4	141	106	265	12.39	4.52	2	G547	2032
1/4	114	132	270	15.39	4.52	2	G547	2032
1/4	92	163	280	19.09	2.16	2	G547	2032
1/4	81	186	300	21.74	2.80	2	G547	2032
1/4	67	223	340	26.08	2.48	2	G547	2032
1/4	48	315	350	36.83	1.56	2	G547	2032
1/4	38	396	360	46.29	1.56	2	G547	2032
1/4	31	484	449	56.70	2.96	2	G547	2042
1/4	28	519	472	62.47	2.32	3	G547	2043
1/4	27	556	471	64.89	2.68	2	G547	2042
1/4	21.9	670	502	79.78	1.76	3	G547	2043
1/4	19.5	743	596	89.78	2.80	3	G547	2063
1/4	18.7	784	505	93.39	1.60	3	G547	2043
1/4	16.8	867	506	104.30	1.40	3	G547	2043
1/4	15.9	919	596	110.30	2.64	3	G547	2063
1/4	15.6	936	596	111.91	2.24	3	G547	2063
1/4	15.4	925	595	113.29	2.68	4	G547	2064
1/4	14.7	991	506	119.27	1.32	3	G547	2043
1/4	13.2	1101	506	132.75	1.08	3	G547	2043
1/4	13.0	1126	596	134.97	1.84	3	G547	2063
1/4	12.6	1126	595	138.72	2.20	4	G547	2064
1/4	12.4	1184	596	140.64	2.04	3	G547	2063
1/4	11.3	1294	596	155.14	1.60	3	G547	2063
1/4	11.2	1319	506	155.93	1.00	3	G547	2043
1/4	10.0	1464	596	175.30	1.68	3	G547	2063
1/4	9.91	1441	595	176.63	1.72	4	G547	2064
1/4	9.32	1549	595	187.69	1.60	4	G547	2064
1/4	8.90	1663	596	197.03	1.24	3	G547	2063
1/4	8.30	1739	596	211.41	1.40	3	G547	2063
1/4	7.40	2062	596	237.66	1.00	3	G547	2063
1/4	7.31	1936	595	239.30	1.28	4	G547	2064
1/4	7.20	2020	596	243.01	1.24	3	G547	2063
1/4	7.18	1998	1685	243.90	2.88	4	G547	2074
1/4	6.80	2123	1688	258.35	2.48	3	G547	2073
1/4	6.30	2360	1688	279.87	2.40	3	G547	2073
1/4	6.18	2283	1685	283.05	2.52	4	G547	2074
1/4	5.87	2478	595	298.29	1.00	4	G547	2064
1/4	5.30	2743	1688	328.12	1.92	3	G547	2073
1/4	4.40	3291	1688	375.77	1.60	3	G547	2073
1/4	4.37	3269	1685	400.85	1.76	4	G547	2074
1/4	3.62	3995	1685	483.40	1.44	4	G547	2074
1/4	2.86	4959	1685	611.66	1.16	4	G547	2074
1/4	2.47	5753	1685	709.84	1.00	4	G547	2074
1/3	163	122	260	10.76	3.15	2	G502	2032
1/3	141	140	265	12.39	3.42	2	G502	2032
1/3	114	174	270	15.39	3.42	2	G502	2032

Note: All torque values listed in inch-pounds, all overhung load values listed in pounds. The point of application of the overhung load is considered to be at the midpoint of the shaft extension. At speeds above 1750 RPM, units may become thermally limited. For extended operation, limit input HP to 1750 RPM catalog rating. All ratios shown are exact ratios.

(TEFC, 3 PHASE, 230/460 VOLT MOTORS) MOTORIZED REDUCER RATINGS

1750 RPM Input Speed								
HP	Output Speed	Output Torque	Overhung Load	Ratio	Service Factor	Gear Stages	Model	
							Motor	Gear
1/3	92	216	280	19.09	1.64	2	G502	2032
1/3	81	246	300	21.74	2.12	2	G502	2032
1/3	67	294	340	26.08	1.88	2	G502	2032
1/3	48	415	350	36.83	1.18	2	G502	2032
1/3	46	430	402	37.93	3.00	2	G502	2042
1/3	40	489	413	43.41	2.61	2	G502	2042
1/3	38	523	360	46.29	1.18	2	G502	2032
1/3	37	528	413	47.01	2.61	2	G502	2042
1/3	31	639	449	56.70	2.24	2	G502	2042
1/3	28	684	472	62.47	1.76	3	G502	2043
1/3	27	734	471	64.89	2.03	2	G502	2042
1/3	24.9	769	589	70.42	2.73	3	G502	2063
1/3	24.2	789	593	72.39	3.06	3	G502	2063
1/3	22.5	834	595	77.68	2.97	4	G502	2064
1/3	21.9	884	502	79.78	1.33	3	G502	2043
1/3	19.7	976	596	88.64	2.48	3	G502	2063
1/3	19.5	981	596	89.78	2.12	3	G502	2063
1/3	18.7	1035	505	93.39	1.21	3	G502	2043
1/3	18.7	997	595	93.51	2.48	4	G502	2064
1/3	16.8	1145	506	104.30	1.06	3	G502	2043
1/3	15.9	1212	596	110.30	2.00	3	G502	2063
1/3	15.6	1236	596	111.91	1.70	3	G502	2063
1/3	15.4	1221	595	113.29	2.03	4	G502	2064
1/3	14.7	1308	506	119.27	1.00	3	G502	2043
1/3	13.0	1486	596	134.97	1.39	3	G502	2063
1/3	12.6	1487	595	138.72	1.67	4	G502	2064
1/3	12.4	1563	596	140.64	1.55	3	G502	2063
1/3	11.3	1709	596	155.14	1.21	3	G502	2063
1/3	11.0	1755	1688	158.94	3.00	3	G502	2073
1/3	10.0	1933	596	175.30	1.27	3	G502	2063
1/3	9.91	1902	595	176.63	1.30	4	G502	2064
1/3	9.60	2032	1688	182.69	2.79	3	G502	2073
1/3	9.40	2069	1688	186.37	2.55	3	G502	2073
1/3	9.32	2044	595	187.69	1.21	4	G502	2064
1/3	9.08	2064	1685	192.75	2.79	4	G502	2074
1/3	7.80	2483	1688	224.76	2.12	3	G502	2073
1/3	7.50	2596	1688	232.03	2.18	3	G502	2073
1/3	7.18	2636	1685	243.90	2.18	4	G502	2074
1/3	6.80	2803	1688	258.35	1.88	3	G502	2073
1/3	6.30	3115	1688	279.87	1.82	3	G502	2073
1/3	6.18	3013	1685	283.05	1.91	4	G502	2074
1/3	5.70	3361	2191	305.72	2.61	3	G502	2083
1/3	5.30	3620	1688	328.12	1.45	3	G502	2073
1/3	4.40	4344	1688	395.77	1.21	3	G502	2073
1/3	4.37	4315	1685	400.85	1.33	4	G502	2074
1/3	3.62	5274	1685	483.40	1.09	4	G502	2074

Note: All torque values listed in inch-pounds, all overhung load values listed in pounds. The point of application of the overhung load is considered to be at the midpoint of the shaft extension. At speeds above 1750 RPM, units may become thermally limited. For extended operation, limit input HP to 1750 RPM catalog rating. All ratios shown are exact ratios.

MOTORIZED REDUCER RATINGS (TEFC, 3 PHASE, 230/460 VOLT MOTORS)

1750 RPM Input Speed								
HP	Output Speed	Output Torque	Overhung Load	Ratio	Service Factor	Gear Stages	Model	
							Motor	Gear
1/2	276	108	220	6.35	3.16	2	G507	2032
1/2	237	126	230	7.38	3.54	2	G507	2032
1/2	199	150	240	8.77	3.68	2	G507	2032
1/2	163	184	260	10.76	2.08	2	G507	2032
1/2	141	212	265	12.39	2.26	2	G507	2032
1/2	122	245	307	14.33	2.42	2	G507	2042
1/2	114	263	270	15.39	2.26	2	G507	2032
1/2	101	296	325	17.28	1.98	2	G507	2042
1/2	92	327	280	19.09	1.08	2	G507	2032
1/2	88	339	348	19.78	1.74	2	G507	2042
1/2	80	372	300	21.74	1.40	2	G507	2032
1/2	71	422	376	24.76	2.96	2	G507	2042
1/2	67	446	340	26.08	1.24	2	G507	2032
1/2	66	458	382	26.70	3.08	2	G507	2042
1/2	56	533	393	31.45	2.28	2	G507	2042
1/2	54	553	383	32.20	2.54	2	G507	2042
1/2	47	631	402	37.01	2.26	2	G507	2042
1/2	46	651	402	37.93	1.98	2	G507	2042
1/2	40	741	413	43.41	1.72	2	G507	2042
1/2	37	800	424	47.01	1.78	2	G507	2042
1/2	30.9	968	449	56.70	1.48	2	G507	2042
1/2	30.9	945	560	56.59	2.20	3	G507	2063
1/2	29.3	1004	574	59.75	2.38	3	G507	2063
1/2	28.0	1037	472	62.47	1.16	3	G507	2043
1/2	27.0	1112	471	64.89	1.34	2	G507	2042
1/2	27.0	1114	584	65.23	2.58	2	G507	2062
1/2	24.9	1165	589	70.42	1.80	3	G507	2063
1/2	24.2	1196	593	72.39	2.02	3	G507	2063
1/2	22.5	1264	595	77.68	1.96	4	G507	2064
1/2	19.7	1479	596	88.64	1.64	3	G507	2063
1/2	19.5	1486	596	89.78	1.40	3	G507	2063
1/2	18.7	1511	595	93.51	1.64	4	G507	2064
1/2	15.9	1837	596	110.30	1.32	3	G507	2063
1/2	15.6	1872	596	111.91	1.12	3	G507	2063
1/2	15.4	1849	595	113.29	1.34	4	G507	2064
1/2	14.9	1965	1688	117.27	2.68	3	G507	2073
1/2	13.3	2195	1688	131.79	2.58	3	G507	2073
1/2	12.8	2231	1685	137.07	2.38	4	G507	2074
1/2	12.6	2253	595	138.72	1.10	4	G507	2064
1/2	12.4	2369	596	140.64	1.02	3	G507	2063
1/2	11.7	2484	1688	149.51	2.28	3	G507	2073
1/2	11.0	2660	1688	158.94	1.98	3	G507	2073
1/2	10.9	2615	1685	160.82	2.20	4	G507	2074
1/2	10.2	2856	2191	171.60	2.90	3	G507	2083
1/2	9.6	3078	1688	182.69	1.84	3	G507	2073
1/2	9.5	3084	2191	184.40	2.84	3	G507	2083
1/2	9.4	3135	1688	186.37	1.68	3	G507	2073

Note: All torque values listed in inch-pounds, all overhung load values listed in pounds. The point of application of the overhung load is considered to be at the midpoint of the shaft extension. At speeds above 1750 RPM, units may become thermally limited. For extended operation, limit input HP to 1750 RPM catalog rating. All ratios shown are exact ratios.

(TEFC, 3 PHASE, 230/460 VOLT MOTORS) MOTORIZED REDUCER RATINGS

1750 RPM Input Speed								
HP	Output Speed	Output Torque	Overhung Load	Ratio	Service Factor	Gear Stages	Model	
							Motor	Gear
1/2	9.2	3161	2191	189.60	2.62	3	G507	2083
1/2	9.1	3127	1685	192.75	1.84	4	G507	2074
1/2	7.9	3680	2191	220.80	2.38	3	G507	2083
1/2	7.8	3761	1688	224.76	1.40	3	G507	2073
1/2	7.5	3933	1688	232.03	1.44	3	G507	2073
1/2	7.4	3981	2191	237.60	2.08	3	G507	2083
1/2	7.2	4055	2191	243.96	2.16	3	G507	2083
1/2	7.18	3995	1685	243.90	1.44	4	G507	2074
1/2	6.80	4247	1688	258.35	1.24	3	G507	2073
1/2	6.30	4720	1688	279.87	1.20	3	G507	2073
1/2	6.18	4566	1685	283.05	1.26	4	G507	2074
1/2	5.70	5092	2191	305.72	1.72	3	G507	2083
3/4	484	93	200	3.62	3.13	2	G522	2032
3/4	276	163	220	6.35	2.11	2	G522	2032
3/4	237	189	230	7.38	2.36	2	G522	2032
3/4	215	209	278	8.14	2.68	2	G522	2042
3/4	199	225	240	8.77	2.45	2	G522	2032
3/4	178	253	286	9.81	2.32	2	G522	2042
3/4	163	276	260	10.76	1.39	2	G522	2032
3/4	155	289	294	11.28	1.97	2	G522	2042
3/4	141	318	265	12.39	1.51	2	G522	2032
3/4	122	367	307	14.33	1.61	2	G522	2042
3/4	114	395	270	15.39	1.51	2	G522	2032
3/4	104	432	322	16.80	2.95	2	G522	2042
3/4	101	445	325	17.28	1.32	2	G522	2042
3/4	98	459	330	17.86	2.68	2	G522	2042
3/4	88	509	348	19.78	1.16	2	G522	2042
3/4	82	550	361	21.42	2.41	2	G522	2042
3/4	81	554	362	21.54	2.32	2	G522	2042
3/4	71	633	376	24.76	1.97	2	G522	2042
3/4	66	687	382	26.70	2.05	2	G522	2042
3/4	60	1004	504	29.18	2.71	2	G522	2062
3/4	56	807	393	31.45	1.52	2	G522	2042
3/4	54	829	383	32.20	1.69	2	G522	2042
3/4	51	886	526	34.55	3.08	2	G522	2062
3/4	48	937	530	36.56	2.92	2	G522	2062
3/4	47	947	402	37.01	1.51	2	G522	2042
3/4	46	977	402	37.93	1.32	2	G522	2042
3/4	42	1063	530	41.36	2.57	2	G522	2062
3/4	40	1112	413	43.41	1.15	2	G522	2042
3/4	38	1171	535	45.70	2.35	2	G522	2062
3/4	37	1200	424	47.01	1.19	2	G522	2042
3/4	31	1418	560	56.58	1.47	3	G522	2063
3/4	31	1469	559	57.27	1.88	2	G522	2062
3/4	29.3	1507	574	59.75	1.59	3	G522	2063
3/4	26.8	1672	584	65.23	1.72	2	G522	2062

Note: All torque values listed in inch-pounds, all overhung load values listed in pounds. The point of application of the overhung load is considered to be at the midpoint of the shaft extension. At speeds above 1750 RPM, units may become thermally limited. For extended operation, limit input HP to 1750 RPM catalog rating. All ratios shown are exact ratios.

MOTORIZED REDUCER RATINGS (TEFC, 3 PHASE, 230/460 VOLT MOTORS)

1750 RPM Input Speed								
HP	Output Speed	Output Torque	Overhung Load	Ratio	Service Factor	Gear Stages	Model	
							Motor	Gear
3/4	24.9	1747	589	70.42	1.20	3	G522	2063
3/4	24.5	1739	1685	71.40	3.05	4	G522	2074
3/4	24.2	1794	593	72.39	1.35	3	G522	2063
3/4	22.7	1927	1688	76.96	2.73	3	G522	2073
3/4	22.5	1896	595	77.68	1.31	4	G522	2064
3/4	21.1	2081	1688	82.92	2.68	3	G522	2073
3/4	19.7	2218	596	88.64	1.09	3	G522	2063
3/4	19.4	2200	1685	90.34	2.41	4	G522	2074
3/4	18.7	2266	595	93.51	1.09	4	G522	2064
3/4	18.6	2351	1688	94.23	2.24	3	G522	2073
3/4	16.7	2569	1685	104.84	2.07	4	G522	2074
3/4	16.6	2638	1688	105.73	2.15	3	G522	2073
3/4	15.4	2836	2191	113.37	2.92	3	G522	2083
3/4	14.9	2947	1688	117.27	1.79	3	G522	2073
3/4	14.7	2973	2191	118.89	2.95	3	G522	2083
3/4	13.3	3293	1688	131.79	1.72	3	G522	2073
3/4	12.8	3347	1685	137.07	1.59	4	G522	2074
3/4	12.2	3590	2191	143.31	2.31	3	G522	2083
3/4	12.0	3650	2191	145.87	2.40	3	G522	2083
3/4	11.7	3726	1688	149.51	1.52	3	G522	2073
3/4	11.0	3989	1688	158.94	1.32	3	G522	2073
3/4	10.9	3922	1685	160.82	1.47	4	G522	2074
3/4	10.2	4283	2191	171.60	1.93	3	G522	2083
3/4	9.6	4617	1688	182.69	1.23	3	G522	2073
3/4	9.5	4626	2191	184.40	1.89	3	G522	2083
3/4	9.4	4702	1688	186.37	1.12	3	G522	2073
3/4	9.2	4741	2191	189.60	1.75	3	G522	2083
3/4	9.08	4690	1685	192.75	1.23	4	G522	2074
3/4	7.90	5520	2191	220.80	1.59	3	G522	2083
3/4	7.40	5972	2191	237.60	1.39	3	G522	2083
3/4	7.20	6083	2191	243.96	1.44	3	G522	2083
3/4	5.70	7639	2191	305.72	1.15	3	G522	2083
1	812	74	190	2.15	3.19	2	G527	2032
1	484	124	200	3.62	2.35	2	G527	2032
1	342	175	241	5.12	2.88	2	G527	2042
1	335	179	210	5.22	2.60	2	G527	2032
1	276	217	220	6.35	1.58	2	G527	2032
1	268	224	259	6.53	2.41	2	G527	2042
1	215	279	278	8.14	2.01	2	G527	2042
1	199	300	240	8.77	1.84	2	G527	2032
1	178	337	286	9.81	1.74	2	G527	2042
1	163	368	260	10.76	1.04	2	G527	2032
1	159	377	294	11.03	2.82	2	G527	2042
1	156	385	294	11.24	2.88	2	G527	2042
1	155	385	294	11.28	1.48	2	G527	2042
1	141	424	265	12.39	1.13	2	G527	2032

Note: All torque values listed in inch-pounds, all overhung load values listed in pounds. The point of application of the overhung load is considered to be at the midpoint of the shaft extension. At speeds above 1750 RPM, units may become thermally limited. For extended operation, limit input HP to 1750 RPM catalog rating. All ratios shown are exact ratios.

(TEFC, 3 PHASE, 230/460 VOLT MOTORS) MOTORIZED REDUCER RATINGS

1750 RPM Input Speed								
HP	Output Speed	Output Torque	Overhung Load	Ratio	Service Factor	Gear Stages	Model	
							Motor	Gear
1	130	462	303	13.50	2.55	2	G527	2042
1	122	491	307	14.33	2.41	2	G527	2042
1	114	526	270	15.39	1.13	2	G527	2032
1	103	583	444	17.04	2.28	2	G527	2062
1	98	612	330	17.86	2.01	2	G527	2042
1	82	734	361	21.42	1.81	2	G527	2042
1	81	739	362	21.54	1.74	2	G527	2042
1	71	844	376	24.76	1.48	2	G527	2042
1	66	905	488	26.41	3.00	2	G527	2062
1	66	915	382	26.70	1.54	2	G527	2042
1	64	936	494	27.33	2.88	2	G527	2062
1	56	1076	393	31.45	1.14	2	G527	2042
1	54	1105	383	32.20	1.27	2	G527	2042
1	51	1181	526	34.55	2.31	2	G527	2062
1	48	1249	530	36.56	2.19	2	G527	2062
1	47	1263	402	37.01	1.13	2	G527	2042
1	42	1417	530	41.36	1.93	2	G527	2062
1	38	1562	535	45.70	1.76	2	G527	2062
1	32.2	1818	1688	54.42	2.75	3	G527	2073
1	30.9	1891	560	56.58	1.10	3	G527	2063
1	30.6	1958	559	57.27	1.41	2	G527	2062
1	29.3	2008	574	59.75	1.19	3	G527	2063
1	27.6	2123	1688	63.51	2.48	3	G527	2073
1	26.8	2229	584	65.23	1.29	2	G527	2062
1	26.3	2222	1688	66.64	2.43	3	G527	2073
1	24.5	2319	1685	71.40	2.29	4	G527	2074
1	24.2	2392	593	72.39	1.01	3	G527	2063
1	24.1	2421	2191	72.60	2.32	3	G527	2083
1	22.7	2569	1688	76.96	2.05	3	G527	2073
1	21.1	2774	1688	82.92	2.01	3	G527	2073
1	19.4	2934	1685	90.34	1.81	4	G527	2074
1	18.9	3089	2191	92.40	2.32	3	G527	2083
1	18.7	3112	2191	93.42	2.31	3	G527	2083
1	18.6	3134	1688	94.23	1.68	3	G527	2073
1	16.7	3426	1685	104.84	1.55	4	G527	2074
1	16.6	3518	1688	105.73	1.61	3	G527	2073
1	15.4	3781	2191	113.36	2.19	3	G527	2083
1	14.9	3930	1688	117.27	1.34	3	G527	2073
1	14.7	3963	2191	118.89	2.21	3	G527	2083
1	13.3	4391	1688	131.79	1.29	3	G527	2073
1	12.8	4462	1685	137.07	1.19	4	G527	2074
1	12.2	4787	2191	143.31	1.73	3	G527	2083
1	12.0	4866	2191	145.87	1.80	3	G527	2083
1	11.7	4968	1688	149.51	1.14	3	G527	2073
1	10.9	5230	1685	160.82	1.10	4	G527	2074
1	10.2	5711	2191	171.60	1.45	3	G527	2083
1	9.5	6168	2191	184.40	1.42	3	G527	2083

Note: All torque values listed in inch-pounds, all overhung load values listed in pounds. The point of application of the overhung load is considered to be at the midpoint of the shaft extension. At speeds above 1750 RPM, units may become thermally limited. For extended operation, limit input HP to 1750 RPM catalog rating. All ratios shown are exact ratios.

MOTORIZED REDUCER RATINGS (TEFC, 3 PHASE, 230/460 VOLT MOTORS)

1750 RPM Input Speed								
HP	Output Speed	Output Torque	Overhung Load	Ratio	Service Factor	Gear Stages	Model	
							Motor	Gear
1	9.2	6321	2191	189.60	1.31	3	G527	2083
1	7.9	7360	2191	220.80	1.19	3	G527	2083
1	7.4	7962	2191	237.60	1.04	3	G527	2083
1	7.2	8110	2191	243.96	1.08	3	G527	2083
1-1/2	812	110	190	2.15	2.13	2	G541	2032
1-1/2	760	118	212	2.30	2.95	2	G541	2042
1-1/2	631	142	223	2.77	2.81	2	G541	2042
1-1/2	521	172	224	3.36	2.51	2	G541	2042
1-1/2	484	186	200	3.62	1.57	2	G541	2032
1-1/2	425	211	229	4.11	2.23	2	G541	2042
1-1/2	346	259	241	5.06	2.95	2	G541	2042
1-1/2	342	263	246	5.12	1.92	2	G541	2042
1-1/2	335	268	210	5.22	1.73	2	G541	2032
1-1/2	287	313	249	6.09	2.81	2	G541	2042
1-1/2	276	326	220	6.35	1.05	2	G541	2032
1-1/2	268	336	259	6.53	1.61	2	G541	2042
1-1/2	237	379	230	7.38	1.18	2	G541	2032
1-1/2	237	378	269	7.38	2.51	2	G541	2042
1-1/2	231	388	273	7.56	2.41	2	G541	2042
1-1/2	215	418	278	8.14	1.34	2	G541	2042
1-1/2	199	450	240	8.77	1.23	2	G541	2032
1-1/2	194	464	280	9.03	2.23	2	G541	2042
1-1/2	192	467	282	9.10	2.15	2	G541	2042
1-1/2	178	505	286	9.81	1.16	2	G541	2042
1-1/2	159	565	294	11.02	1.88	2	G541	2042
1-1/2	156	578	294	11.24	1.92	2	G541	2042
1-1/2	142	632	415	12.30	2.68	2	G541	2062
1-1/2	130	693	303	13.50	1.71	2	G541	2042
1-1/2	129	699	420	13.59	2.31	2	G541	2062
1-1/2	122	737	307	14.33	1.61	2	G541	2042
1-1/2	104	864	322	16.80	1.47	2	G541	2042
1-1/2	103	875	444	17.04	1.52	2	G541	2062
1-1/2	100	898	449	17.50	2.80	2	G541	2062
1-1/2	98	918	330	17.86	1.34	2	G541	2042
1-1/2	82	1100	361	21.42	1.21	2	G541	2042
1-1/2	81	1109	362	21.54	1.16	2	G541	2042
1-1/2	79	1133	468	22.05	2.39	2	G541	2062
1-1/2	66	1358	488	26.41	2.00	2	G541	2062
1-1/2	66	1373	382	26.70	1.03	2	G541	2042
1-1/2	64	1405	494	27.33	1.92	2	G541	2062
1-1/2	60	2009	504	29.18	1.35	2	G541	2062
1-1/2	51	1771	526	34.55	1.54	2	G541	2062
1-1/2	48	1874	530	36.56	1.46	2	G541	2062
1-1/2	42	2126	530	41.36	1.29	2	G541	2062
1-1/2	38	2343	535	45.70	1.17	2	G541	2062
1-1/2	32.2	2727	1688	54.42	1.83	3	G541	2073

Note: All torque values listed in inch-pounds, all overhung load values listed in pounds. The point of application of the overhung load is considered to be at the midpoint of the shaft extension. At speeds above 1750 RPM, units may become thermally limited. For extended operation, limit input HP to 1750 RPM catalog rating. All ratios shown are exact ratios.

(TEFC, 3 PHASE, 230/460 VOLT MOTORS) MOTORIZED REDUCER RATINGS

1750 RPM Input Speed								
HP	Output Speed	Output Torque	Overhung Load	Ratio	Service Factor	Gear Stages	Model	
							Motor	Gear
1-1/2	31.5	2783	2191	55.53	2.75	3	G541	2083
1-1/2	28.4	3084	2191	61.57	2.84	3	G541	2083
1-1/2	26.3	3333	1688	66.64	1.62	3	G541	2073
1-1/2	24.5	3478	1685	71.40	1.53	4	G541	2074
1-1/2	24.5	3580	2191	71.45	2.45	3	G541	2083
1-1/2	24.1	3632	2191	72.60	1.55	3	G541	2083
1-1/2	21.1	4161	1688	82.92	1.34	3	G541	2073
1-1/2	19.4	4400	1685	90.34	1.21	4	G541	2074
1-1/2	18.9	4633	2191	92.40	1.55	3	G541	2083
1-1/2	18.7	4667	2191	93.42	1.55	3	G541	2083
1-1/2	18.6	4702	1688	94.23	1.12	3	G541	2073
1-1/2	16.7	5139	1685	104.84	1.03	4	G541	2074
1-1/2	16.6	5277	1688	105.73	1.07	3	G541	2073
1-1/2	15.4	5672	2191	113.36	1.46	3	G541	2083
1-1/2	14.7	5945	2191	118.89	1.47	3	G541	2083
1-1/2	12.2	7180	2191	143.31	1.15	3	G541	2083
1-1/2	12.0	7299	2191	145.87	1.20	3	G541	2083
2	760	158	212	2.30	2.22	2	C222	2042
2	631	190	223	2.77	2.11	2	C222	2042
2	521	230	224	3.36	1.88	2	C222	2042
2	425	282	229	4.11	1.68	2	C222	2042
2	346	346	241	5.06	2.22	2	C222	2042
2	342	351	241	5.12	1.44	2	C222	2042
2	287	417	249	6.09	2.11	2	C222	2042
2	268	448	259	6.53	1.21	2	C222	2042
2	237	504	269	7.37	1.88	2	C222	2042
2	231	518	273	7.56	1.81	2	C222	2042
2	215	557	278	8.14	1.01	2	C222	2042
2	215	557	367	8.13	2.92	2	C222	2062
2	194	619	280	9.03	1.68	2	C222	2042
2	192	623	282	9.10	1.61	2	C222	2042
2	170	704	404	10.28	2.40	2	C222	2062
2	159	754	294	11.03	1.41	2	C222	2042
2	156	770	294	11.24	1.44	2	C222	2042
2	142	843	415	12.30	2.01	2	C222	2062
2	131	917	419	13.39	2.68	2	C222	2062
2	130	924	303	13.50	1.28	2	C222	2042
2	129	931	420	13.59	1.74	2	C222	2062
2	127	944	1685	13.78	2.72	2	C222	2072
2	123	974	424	14.22	2.74	2	C222	2062
2	122	983	307	14.33	1.21	2	C222	2042
2	105	1137	1685	16.61	2.28	2	C222	2072
2	104	1152	322	16.80	1.11	2	C222	2042
2	103	1167	444	17.04	1.14	2	C222	2062
2	100	1195	449	17.44	2.25	2	C222	2062
2	98	1224	330	17.86	1.01	2	C222	2042

Note: All torque values listed in inch-pounds, all overhung load values listed in pounds. The point of application of the overhung load is considered to be at the midpoint of the shaft extension. At speeds above 1750 RPM, units may become thermally limited. For extended operation, limit input HP to 1750 RPM catalog rating. All ratios shown are exact ratios.

MOTORIZED REDUCER RATINGS (TEFC, 3 PHASE, 230/460 VOLT MOTORS)

1750 RPM Input Speed								
HP	Output Speed	Output Torque	Overhung Load	Ratio	Service Factor	Gear Stages	Model	
							Motor	Gear
2	79	1510	468	22.05	1.79	2	C222	2062
2	66	1811	488	26.41	1.50	2	C222	2062
2	64	1873	494	27.33	1.44	2	C222	2062
2	60	2679	504	29.18	1.02	2	C222	2062
2	56	2131	1685	31.10	2.68	2	C222	2072
2	51	2362	526	34.55	1.16	2	C222	2062
2	48	2499	530	36.56	1.10	2	C222	2062
2	47	2569	1685	37.50	2.25	2	C222	2072
2	42	2855	1685	41.66	2.01	2	C222	2072
2	40	3015	1685	43.97	1.88	2	C222	2072
2	33	3636	1685	53.03	1.54	2	C222	2072
2	32.2	3636	1688	54.42	1.38	3	C222	2073
2	31.5	3711	2191	55.53	2.06	3	C222	2083
2	30.0	4039	1685	58.92	1.44	2	C222	2072
2	28.4	4112	2191	61.57	2.13	3	C222	2083
2	27.6	4247	1688	63.52	1.24	3	C222	2073
2	26.3	4444	1688	66.64	1.22	3	C222	2073
2	24.5	4773	2191	71.45	1.84	3	C222	2083
2	24.1	4843	2191	72.60	1.16	3	C222	2083
2	22.7	5138	1688	76.96	1.03	3	C222	2073
2	21.1	5548	1688	82.92	1.01	3	C222	2073
2	18.9	6178	2191	92.40	1.16	3	C222	2083
2	18.7	6223	2191	93.42	1.16	3	C222	2083
2	15.4	7562	2191	113.36	1.10	3	C222	2083
2	14.7	7927	2191	118.89	1.11	3	C222	2083
3	760	236	212	2.30	1.48	2	C223	2042
3	631	285	223	2.77	1.41	2	C223	2042
3	521	345	224	3.36	1.25	2	C223	2042
3	425	423	229	4.11	1.12	2	C223	2042
3	346	519	241	5.06	1.48	2	C223	2042
3	336	535	338	5.21	2.73	2	C223	2062
3	287	626	249	6.09	1.41	2	C223	2042
3	264	680	369	6.63	2.28	2	C223	2062
3	237	756	269	7.38	1.25	2	C223	2042
3	231	777	273	7.56	1.21	2	C223	2042
3	230	781	383	7.61	2.89	2	C223	2062
3	215	835	367	8.13	1.94	2	C223	2062
3	205	878	394	8.55	2.99	2	C223	2062
3	194	929	280	9.03	1.12	2	C223	2042
3	192	934	282	9.10	1.07	2	C223	2042
3	192	936	401	9.12	2.45	2	C223	2062
3	170	1056	404	10.28	1.60	2	C223	2062
3	157	1147	412	11.17	2.31	2	C223	2062
3	152	1184	411	11.53	2.07	2	C223	2062
3	142	1265	415	12.30	1.34	2	C223	2062
3	131	1376	419	13.39	1.79	2	C223	2062

Note: All torque values listed in inch-pounds, all overhung load values listed in pounds. The point of application of the overhung load is considered to be at the midpoint of the shaft extension. At speeds above 1750 RPM, units may become thermally limited. For extended operation, limit input HP to 1750 RPM catalog rating. All ratios shown are exact ratios.

(TEFC, 3 PHASE, 230/460 VOLT MOTORS) MOTORIZED REDUCER RATINGS

1750 RPM Input Speed								
HP	Output Speed	Output Torque	Overhung Load	Ratio	Service Factor	Gear Stages	Model	
							Motor	Gear
3	129	1397	420	13.59	1.16	2	C223	2062
3	127	1415	1685	13.78	1.81	2	C223	2072
3	123	1462	424	14.22	1.83	2	C223	2062
3	105	1706	1685	16.61	1.52	2	C223	2072
3	105	1707	2191	16.61	2.78	2	C223	2082
3	100	1793	449	17.45	1.50	2	C223	2062
3	83	2172	1685	21.15	2.45	2	C223	2072
3	79	2265	468	22.05	1.19	2	C223	2062
3	70	2568	1685	25.00	2.20	2	C223	2072
3	66	2716	488	26.41	1.00	2	C223	2062
3	56	3196	1685	31.10	1.79	2	C223	2072
3	47	3871	1685	37.50	1.50	2	C223	2072
3	47	3853	2191	37.50	2.60	2	C223	2082
3	42	4282	1685	41.66	1.34	2	C223	2072
3	42	4277	2191	41.66	2.34	2	C223	2082
3	40	4522	1685	43.97	1.25	2	C223	2072
3	36	4954	2191	48.25	2.23	2	C223	2082
3	33	5455	1685	53.03	1.03	2	C223	2072
3	33	5510	2191	53.61	2.01	2	C223	2082
3	31.5	5566	2191	55.53	1.37	3	C223	2083
3	28.4	6168	2191	61.57	1.42	3	C223	2083
3	24.5	7160	2191	71.45	1.22	3	C223	2083
5	774	387	262	2.26	3.43	2	C224	2062
5	645	464	286	2.71	3.43	2	C224	2062
5	510	587	301	3.43	2.90	2	C224	2062
5	440	682	312	3.98	2.48	2	C224	2062
5	360	831	332	4.86	2.99	2	C224	2062
5	336	891	338	5.21	1.64	2	C224	2062
5	301	996	355	5.82	2.54	2	C224	2062
5	264	1134	369	6.63	1.37	2	C224	2062
5	264	1135	1685	6.63	2.52	2	C224	2072
5	238	1260	382	7.36	2.07	2	C224	2062
5	230	1301	383	7.61	1.74	2	C224	2062
5	223	1336	1685	7.83	2.18	2	C224	2072
5	215	1392	367	8.13	1.17	2	C224	2062
5	205	1463	394	8.55	1.79	2	C224	2062
5	192	1560	401	9.12	1.47	2	C224	2062
5	183	1646	1685	9.58	2.92	2	C224	2072
5	164	1824	1685	10.65	2.92	2	C224	2072
5	163	1845	1685	10.77	2.68	2	C224	2072
5	157	1913	412	11.17	1.38	2	C224	2062
5	152	1973	411	11.53	1.24	2	C224	2062
5	150	1993	1685	11.67	2.54	2	C224	2072
5	150	1999	2191	11.70	2.74	2	C224	2082
5	132	2260	1685	13.21	2.30	2	C224	2072
5	131	2293	419	13.39	1.07	2	C224	2062

Note: All torque values listed in inch-pounds, all overhung load values listed in pounds. The point of application of the overhung load is considered to be at the midpoint of the shaft extension. At speeds above 1750 RPM, units may become thermally limited. For extended operation, limit input HP to 1750 RPM catalog rating. All ratios shown are exact ratios.

MOTORIZED REDUCER RATINGS (TEFC, 3 PHASE, 230/460 VOLT MOTORS)

1750 RPM Input Speed								
HP	Output Speed	Output Torque	Overhung Load	Ratio	Service Factor	Gear Stages	Model	
							Motor	Gear
5	127	2359	1685	13.78	1.09	2	C224	2072
5	123	2436	424	14.22	1.10	2	C224	2062
5	117	2552	1685	14.95	2.30	2	C224	2072
5	116	2568	1685	15.05	2.04	2	C224	2072
5	105	2845	2191	16.61	1.66	2	C224	2082
5	99	3034	1685	17.68	2.02	2	C224	2072
5	83	3621	1685	21.15	1.48	2	C224	2072
5	77	3905	2191	22.75	2.72	2	C224	2082
5	70	4281	1685	25.00	1.32	2	C224	2072
5	66	4501	2191	26.40	2.20	2	C224	2082
5	56	5327	1685	31.10	1.07	2	C224	2072
5	52	5817	2191	33.97	1.67	2	C224	2082
5	47	6420	2191	37.50	1.56	2	C224	2082
5	42	7129	2191	41.66	1.41	2	C224	2082
5	36	8257	2191	48.25	1.34	2	C224	2082
5	33	9183	2191	53.61	1.21	2	C224	2082
7.5	774	581	292	2.26	2.29	2	C225	2062
7.5	645	696	286	2.71	2.29	2	C225	2062
7.5	510	881	301	3.43	1.93	2	C225	2062
7.5	440	1023	312	3.98	1.65	2	C225	2062
7.5	423	1060	1566	4.14	2.45	2	C225	2072
7.5	371	1208	1629	4.72	2.21	2	C225	2072
7.5	360	1246	332	4.86	1.99	2	C225	2062
7.5	336	1337	338	5.21	1.09	2	C225	2062
7.5	312	1440	1642	5.62	2.97	2	C225	2072
7.5	301	1493	355	5.82	1.69	2	C225	2062
7.5	279	1612	1685	6.28	2.77	2	C225	2072
7.5	264	1702	1685	6.63	1.68	2	C225	2072
7.5	258	1738	1685	6.78	2.64	2	C225	2072
7.5	246	1828	1685	7.12	2.44	2	C225	2072
7.5	230	1952	383	7.61	1.16	2	C225	2062
7.5	230	1959	1685	7.62	2.45	2	C225	2072
7.5	223	2004	1685	7.83	1.45	2	C225	2072
7.5	223	2010	2078	7.83	2.72	2	C225	2082
7.5	220	2043	1685	7.94	2.24	2	C225	2072
7.5	212	2122	1685	8.25	2.32	2	C225	2072
7.5	205	2195	394	8.55	1.20	2	C225	2062
7.5	197	2284	1685	8.88	2.05	2	C225	2072
7.5	187	2398	1685	9.34	2.15	2	C225	2072
7.5	183	2468	1685	9.58	1.95	2	C225	2072
7.5	164	2736	1685	10.65	1.95	2	C225	2072
7.5	163	2767	1685	10.77	1.79	2	C225	2072
7.5	150	2989	1685	11.67	1.69	2	C225	2072
7.5	150	2998	2191	11.70	1.83	2	C225	2082
7.5	132	3390	1685	13.21	1.53	2	C225	2072
7.5	128	3515	2191	13.70	2.77	2	C225	2082

Note: All torque values listed in inch-pounds, all overhung load values listed in pounds. The point of application of the overhung load is considered to be at the midpoint of the shaft extension. At speeds above 1750 RPM, units may become thermally limited. For extended operation, limit input HP to 1750 RPM catalog rating. All ratios shown are exact ratios.

(TEFC, 3 PHASE, 230/460 VOLT MOTORS) MOTORIZED REDUCER RATINGS

1750 RPM Input Speed								
HP	Output Speed	Output Torque	Overhung Load	Ratio	Service Factor	Gear Stages	Model	
							Motor	Gear
7.5	117	3828	1685	14.95	1.53	2	C225	2072
7.5	116	3852	1685	15.05	1.36	2	C225	2072
7.5	105	4268	2191	16.61	1.11	2	C225	2082
7.5	99	4550	1685	17.68	1.35	2	C225	2072
7.5	99	4531	2191	17.68	2.16	2	C225	2082
7.5	77	5857	2191	22.75	1.81	2	C225	2082
7.5	66	6752	2191	26.40	1.47	2	C225	2082
7.5	52	8726	2191	33.97	1.24	2	C225	2082
7.5	47	9631	2191	37.50	1.04	2	C225	2082
10	785	764	1273	2.23	2.85	2	C226	2072
10	774	774	262	2.26	1.72	2	C226	2062
10	703	853	1301	2.49	2.85	2	C226	2072
10	645	928	286	2.71	1.72	2	C226	2062
10	629	954	1346	2.78	2.85	2	C226	2072
10	583	1029	1348	3.00	2.72	2	C226	2072
10	519	1156	1350	3.37	2.46	2	C226	2072
10	510	1175	301	3.43	1.45	2	C226	2062
10	479	1250	1442	3.66	2.30	2	C226	2072
10	440	1364	312	3.98	1.24	2	C226	2062
10	423	1413	1566	4.14	1.84	2	C226	2072
10	371	1611	1629	4.72	1.66	2	C226	2072
10	360	1662	332	4.86	1.49	2	C226	2062
10	348	1726	1576	5.03	2.37	2	C226	2072
10	312	1920	1642	5.62	2.23	2	C226	2072
10	301	1991	355	5.82	1.27	2	C226	2062
10	279	2149	1685	6.28	2.08	2	C226	2072
10	264	2269	1685	6.63	1.26	2	C226	2072
10	258	2318	1685	6.78	1.98	2	C226	2072
10	246	2437	1685	7.12	1.83	2	C226	2072
10	238	2520	382	7.36	1.03	2	C226	2062
10	230	2612	1685	7.62	1.84	2	C226	2072
10	223	2672	1685	7.83	1.09	2	C226	2072
10	223	2679	2078	7.83	2.04	2	C226	2082
10	220	2724	1685	7.94	1.68	2	C226	2072
10	212	2830	1685	8.25	1.74	2	C226	2072
10	201	2982	2134	8.72	2.94	2	C226	2082
10	197	3045	1685	8.88	1.54	2	C226	2072
10	187	3197	1685	9.34	1.61	2	C226	2072
10	183	3291	1685	9.58	1.46	2	C226	2072
10	179	3357	2157	9.80	2.68	2	C226	2082
10	172	3493	2191	10.20	2.60	2	C226	2082
10	164	3649	1685	10.65	1.46	2	C226	2072
10	164	3638	2191	10.65	2.64	2	C226	2082
10	163	3690	1685	10.77	1.34	2	C226	2072
10	152	3946	2191	11.53	2.36	2	C226	2082
10	150	3986	1685	11.67	1.27	2	C226	2072

Note: All torque values listed in inch-pounds, all overhung load values listed in pounds. The point of application of the overhung load is considered to be at the midpoint of the shaft extension. At speeds above 1750 RPM, units may become thermally limited. For extended operation, limit input HP to 1750 RPM catalog rating. All ratios shown are exact ratios.

MOTORIZED REDUCER RATINGS (TEFC, 3 PHASE, 230/460 VOLT MOTORS)

1750 RPM Input Speed								
HP	Output Speed	Output Torque	Overhung Load	Ratio	Service Factor	Gear Stages	Model	
							Motor	Gear
10	150	3998	2191	11.70	1.37	2	C226	2082
10	132	4520	1685	13.21	1.15	2	C226	2072
10	128	4686	2191	13.70	2.08	2	C226	2082
10	117	5104	1685	14.95	1.15	2	C226	2072
10	116	5136	1685	15.05	1.02	2	C226	2072
10	99	6067	1685	17.68	1.01	2	C226	2072
10	99	6042	2191	17.68	1.62	2	C226	2082
10	77	7810	2191	22.75	1.36	2	C226	2082
10	66	9003	2191	26.40	1.10	2	C226	2082
15	785	1146	1273	2.23	1.90	2	C227	2072
15	703	1279	1301	2.49	1.90	2	C227	2072
15	629	1431	1346	2.78	1.90	2	C227	2072
15	583	1543	1348	3.00	1.81	2	C227	2072
15	519	1734	1350	3.37	1.64	2	C227	2072
15	498	1801	1640	3.51	3.00	2	C227	2082
15	479	1876	1442	3.66	1.53	2	C227	2072
15	441	2039	1651	3.97	2.15	2	C227	2082
15	423	2120	1566	4.14	1.23	2	C227	2072
15	371	2416	1629	4.72	1.11	2	C227	2072
15	371	2421	1719	4.72	2.15	2	C227	2082
15	348	2589	1576	5.03	1.58	2	C227	2072
15	312	2880	1642	5.62	1.49	2	C227	2072
15	312	2886	1797	5.62	3.00	2	C227	2082
15	279	3224	1685	6.28	1.39	2	C227	2072
15	279	3226	1887	6.28	2.75	2	C227	2082
15	270	3324	1966	6.48	2.49	2	C227	2082
15	258	3477	1685	6.78	1.32	2	C227	2072
15	258	3479	1977	6.78	2.59	2	C227	2082
15	246	3656	1685	7.12	1.22	2	C227	2072
15	242	3707	2022	7.23	2.27	2	C227	2082
15	230	3919	1685	7.62	1.23	2	C227	2072
15	230	3911	2078	7.62	2.36	2	C227	2082
15	223	4019	2078	7.83	1.36	2	C227	2082
15	221	4069	2078	7.92	2.28	2	C227	2082
15	220	4087	1685	7.94	1.12	2	C227	2072
15	217	4152	2101	8.08	2.07	2	C227	2082
15	212	4245	1685	8.25	1.16	2	C227	2072
15	197	4568	1685	8.88	1.03	2	C227	2072
15	195	4600	2134	8.96	2.07	2	C227	2082
15	187	4795	1685	9.34	1.07	2	C227	2072
15	179	5036	2157	9.80	1.79	2	C227	2082
15	172	5240	2191	10.20	1.73	2	C227	2082
15	164	5457	2191	10.65	1.76	2	C227	2082
15	152	5919	2191	11.53	1.57	2	C227	2082
15	128	7029	2191	13.70	1.39	2	C227	2082
15	99	9063	2191	17.65	1.08	2	C227	2082

Note: All torque values listed in inch-pounds, all overhung load values listed in pounds. The point of application of the overhung load is considered to be at the midpoint of the shaft extension. At speeds above 1750 RPM, units may become thermally limited. For extended operation, limit input HP to 1750 RPM catalog rating. All ratios shown are exact ratios.

(TEFC, 3 PHASE, 230/460 VOLT MOTORS) MOTORIZED REDUCER RATINGS

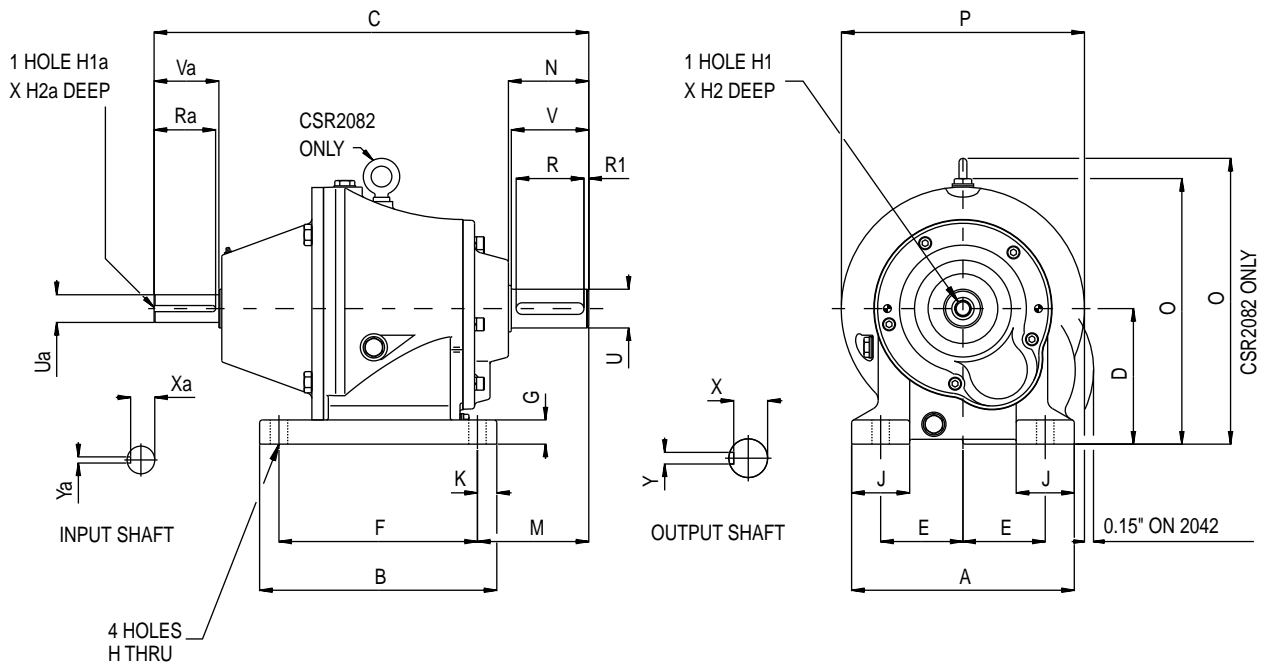
1750 RPM Input Speed								
HP	Output Speed	Output Torque	Overhung Load	Ratio	Service Factor	Gear Stages	Model	
							Motor	Gear
20	785	1528	1273	2.23	1.43	2	U724	2072
20	785	1526	1505	2.23	2.97	2	U724	2082
20	703	1706	1301	2.49	1.43	2	U724	2072
20	703	1704	1516	2.49	2.80	2	U724	2082
20	629	1908	1346	2.78	1.43	2	U724	2072
20	629	1906	1539	2.78	2.61	2	U724	2082
20	583	2057	1348	3.00	1.36	2	U724	2072
20	583	2056	1573	3.00	2.50	2	U724	2082
20	519	2311	1350	3.37	1.23	2	U724	2072
20	519	2308	1618	3.37	2.32	2	U724	2082
20	498	2401	1640	3.51	2.26	2	U724	2082
20	479	2501	1442	3.66	1.15	2	U724	2072
20	441	2719	1651	3.97	1.62	2	U724	2082
20	371	3228	1719	4.72	1.61	2	U724	2082
20	348	3451	1576	5.03	1.19	2	U724	2072
20	348	3449	1752	5.03	2.45	2	U724	2082
20	312	3839	1642	5.62	1.12	2	U724	2072
20	312	3849	1797	5.62	2.27	2	U724	2082
20	279	4298	1685	6.28	1.04	2	U724	2072
20	279	4301	1887	6.28	2.07	2	U724	2082
20	270	4432	1966	6.48	1.87	2	U724	2082
20	258	4639	1977	6.78	1.95	2	U724	2082
20	242	4943	2022	7.23	1.71	2	U724	2082
20	230	5215	2078	7.62	1.77	2	U724	2082
20	223	5359	2078	7.83	1.02	2	U724	2082
20	221	5425	2078	7.92	1.71	2	U724	2082
20	217	5536	2101	8.08	1.56	2	U724	2082
20	201	5964	2134	8.72	1.47	2	U724	2082
20	195	6133	2134	8.96	1.56	2	U724	2082
20	179	6715	2157	9.80	1.34	2	U724	2082
20	172	6986	2191	10.20	1.30	2	U724	2082
20	164	7276	2191	10.65	1.32	2	U724	2082
20	152	7892	2191	11.53	1.18	2	U724	2082
20	128	9372	2191	13.70	1.04	2	U724	2082
25	785	1908	1505	2.23	2.37	2	U725	2082
25	703	2129	1516	2.49	2.24	2	U725	2082
25	629	2382	1539	2.78	2.09	2	U725	2082
25	583	2570	1573	3.00	2.00	2	U725	2082
25	519	2885	1618	3.37	1.85	2	U725	2082
25	498	3002	1640	3.51	1.81	2	U725	2082
25	441	3399	1651	3.97	1.29	2	U725	2082
25	371	4035	1719	4.72	1.29	2	U725	2082
25	348	4311	1752	5.03	1.96	2	U725	2082
25	312	4811	1797	5.62	1.81	2	U725	2082
25	279	5377	1887	6.28	1.65	2	U725	2082
25	270	5540	1966	6.48	1.49	2	U725	2082

Note: All torque values listed in inch-pounds, all overhung load values listed in pounds. The point of application of the overhung load is considered to be at the midpoint of the shaft extension. At speeds above 1750 RPM, units may become thermally limited. For extended operation, limit input HP to 1750 RPM catalog rating. All ratios shown are exact ratios.

MOTORIZED REDUCER RATINGS (TEFC, 3 PHASE, 230/460 VOLT MOTORS)

1750 RPM Input Speed								
HP	Output Speed	Output Torque	Overhung Load	Ratio	Service Factor	Gear Stages	Model	
							Motor	Gear
25	258	5799	1977	6.78	1.56	2	U725	2082
25	242	6179	2022	7.23	1.36	2	U725	2082
25	230	6518	2078	7.62	1.42	2	U725	2082
25	221	6781	2078	7.92	1.37	2	U725	2082
25	217	6920	2101	8.08	1.24	2	U725	2082
25	201	7455	2134	8.72	1.18	2	U725	2082
25	195	7666	2134	8.96	1.24	2	U725	2082
25	179	8394	2157	9.80	1.07	2	U725	2082
25	172	8733	2191	10.20	1.04	2	U725	2082
25	164	9095	2191	10.65	1.06	2	U725	2082
30	785	2289	1505	2.23	1.98	2	U726	2082
30	703	2555	1516	2.49	1.87	2	U726	2082
30	629	2859	1539	2.78	1.74	2	U726	2082
30	583	3084	1573	3.00	1.67	2	U726	2082
30	519	3462	1618	3.37	1.54	2	U726	2082
30	498	3602	1640	3.51	1.51	2	U726	2082
30	441	4078	1651	3.97	1.08	2	U726	2082
30	371	4842	1719	4.72	1.07	2	U726	2082
30	348	5174	1752	5.03	1.63	2	U726	2082
30	312	5773	1797	5.62	1.51	2	U726	2082
30	279	6452	1887	6.28	1.38	2	U726	2082
30	270	6647	1966	6.48	1.24	2	U726	2082
30	258	6959	1977	6.78	1.30	2	U726	2082
30	242	7415	2022	7.23	1.14	2	U726	2082
30	230	7822	2078	7.62	1.18	2	U726	2082
30	221	8138	2078	7.92	1.14	2	U726	2082
30	217	8304	2101	8.08	1.04	2	U726	2082
30	195	9200	2134	8.96	1.04	2	U726	2082

Note: All torque values listed in inch-pounds, all overhung load values listed in pounds. The point of application of the overhung load is considered to be at the mid-point of the shaft extension. At speeds above 1750 RPM, units may become thermally limited. For extended operation, limit input HP to 1750 RPM catalog rating. All ratios shown are exact ratios.

TYPE CSR

Reducer Size	A	B	C	D	E	F	G	H	H1	H2	J	K	M	N	O	P	R	R1	U*
CSR2042	5.71	6.30	11.88	3.54	2.17	5.12	0.59	0.39	3/8 UNF	0.87	1.38	0.59	2.95	2.09	7.17	6.30	1.57	0.28	1.0000
CSR2062	7.48	7.87	13.21	4.53	2.66	6.50	0.71	0.55	3/8 UNF	0.87	2.17	0.69	3.54	2.44	8.94	7.87	1.97	0.28	1.250
CSR2072	9.06	9.65	17.67	5.51	3.35	8.07	0.98	0.71	1/2 UNF	1.10	2.36	0.79	4.53	3.27	10.94	9.84	2.76	0.20	1.6250
CSR2082	11.42	12.20	21.64	7.09	4.23	10.34	1.10	0.71	5/8 UNF	1.42	2.95	0.98	5.51	4.06	14.65	11.81	3.15	0.39	2.1250

Note: Dimension O on CSR2082 includes Eyebolt.

* Shaft diameters of 1.250 & under: +.0000 -.0005

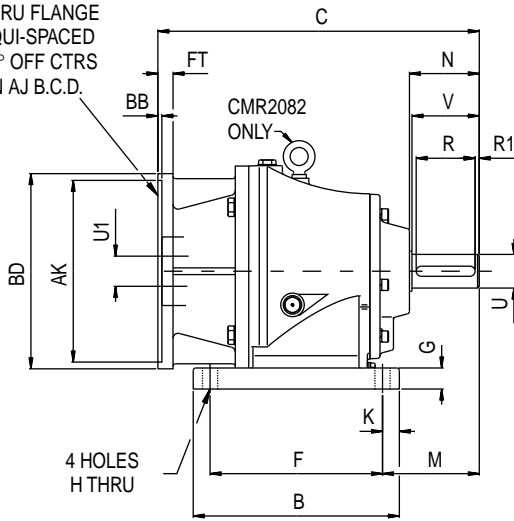
* Shaft diameters over 1.250: +.0000 -.0010

Reducer Size	V	X	Y	H1a	H2a	Ra	Ua	Va	Xa	Ya
CSR2042	1.97	0.8541	0.252	—	—	1.75	0.6250	1.88	0.5118	0.1895
CSR2062	2.36	1.1074	0.252	1/4 UNC	0.63	2.13	0.8750	2.25	0.7660	0.1895
CSR2072	3.15	1.4106	0.377	3/8 UNF	0.87	2.50	1.1250	2.63	0.9809	0.2520
CSR2082	3.94	1.8402	0.502	1/2 UNF	1.10	2.88	1.3750	3.13	1.1960	0.3145

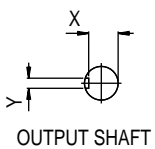
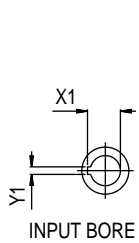
WARNING For safety, Buyer or User should provide protective guards over shaft extensions and any couplings, sheaves and belts, sprockets and chains, etc., mounted thereon.

DOUBLE REDUCTION - REDUCER DIMENSIONS

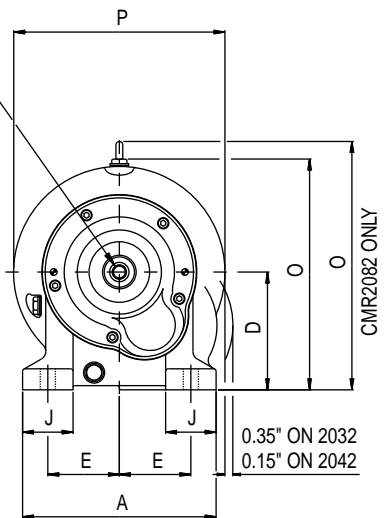
4 HOLES BF
THRU FLANGE
EQUI-SPACED
45° OFF CTRS
ON AJ B.C.D.



TYPE CMR



1 HOLE H1
X H2 DEEP



Reducer Size	A	B	C	D	E	F	G	H	H1	H2	J	K	M	N	O	P	R	R1	U*
CMR2032-42C	5.31	4.33	8.39	2.95	2.17	3.35	0.47	0.39	1/4 UNC	0.63	0.98	0.49	2.28	1.63	5.71	5.51	1.26	0.16	0.750
CMR2032-48C	5.31	4.33	8.39	2.95	2.17	3.35	0.47	0.39	1/4 UNC	0.63	0.98	0.49	2.28	1.63	5.71	5.51	1.26	0.16	0.750
CMR2032-56C	5.31	4.33	8.70	2.95	2.17	3.35	0.47	0.39	1/4 UNC	0.63	0.98	0.49	2.28	1.63	5.71	5.51	1.26	0.16	0.750
CMR2042-56C	5.71	6.30	9.17	3.54	2.17	5.12	0.59	0.39	3/8 UNF	0.87	1.38	0.59	2.95	2.09	7.17	6.30	1.57	0.28	1.000
CMR2042-140TC	5.71	6.30	9.17	3.54	2.17	5.12	0.59	0.39	3/8 UNF	0.87	1.38	0.59	2.95	2.09	7.17	6.30	1.57	0.28	1.000
CMR2042-180TC	5.71	6.30	9.88	3.54	2.17	5.12	0.59	0.39	3/8 UNF	0.87	1.38	0.59	2.95	2.09	7.17	6.30	1.57	0.28	1.000
CMR2062-56C	7.48	7.87	10.08	4.53	2.66	6.50	0.71	0.55	3/8 UNF	0.87	2.17	0.69	3.54	2.44	8.94	7.87	1.97	0.28	1.250
CMR2062-140TC	7.48	7.87	10.08	4.53	2.66	6.50	0.71	0.55	3/8 UNF	0.87	2.17	0.69	3.54	2.44	8.94	7.87	1.97	0.28	1.250
CMR2062-180TC	7.48	7.87	11.44	4.53	2.66	6.50	0.71	0.55	3/8 UNF	0.87	2.17	0.69	3.54	2.44	8.94	7.87	1.97	0.28	1.250
CMR2062-210TC	7.48	7.87	11.44	4.53	2.66	6.50	0.71	0.55	3/8 UNF	0.87	2.17	0.69	3.54	2.44	8.94	7.87	1.97	0.28	1.250
CMR2072-140TC	9.06	9.65	13.15	5.51	3.35	8.07	0.98	0.71	1/2 UNF	1.10	2.36	0.79	4.53	3.27	10.94	9.84	2.76	0.20	1.625
CMR2072-180TC	9.06	9.65	14.83	5.51	3.35	8.07	0.98	0.71	1/2 UNF	1.10	2.36	0.79	4.53	3.27	10.94	9.84	2.76	0.20	1.625
CMR2072-210TC	9.06	9.65	14.83	5.51	3.35	8.07	0.98	0.71	1/2 UNF	1.10	2.36	0.79	4.53	3.27	10.94	9.84	2.76	0.20	1.625
CMR2072-250TC	9.06	9.65	14.83	5.51	3.35	8.07	0.98	0.71	1/2 UNF	1.10	2.36	0.79	4.53	3.27	10.94	9.84	2.76	0.20	1.625
CMR2082-180TC	11.42	12.20	18.46	7.09	4.23	10.24	1.10	0.71	5/8 UNF	1.42	2.95	0.98	5.51	4.06	14.65	11.81	3.15	0.39	2.125
CMR2082-210TC	11.42	12.20	18.46	7.09	4.23	10.24	1.10	0.71	5/8 UNF	1.42	2.95	0.98	5.51	4.06	14.65	11.81	3.15	0.39	2.125
CMR2082-250TC	11.42	12.20	18.46	7.09	4.23	10.24	1.10	0.71	5/8 UNF	1.42	2.95	0.98	5.51	4.06	14.65	11.81	3.15	0.39	2.125
CMR2082-280TC	11.42	12.20	19.01	7.09	4.23	10.24	1.10	0.71	5/8 UNF	1.42	2.95	0.98	5.51	4.06	14.65	11.81	3.15	0.39	2.125

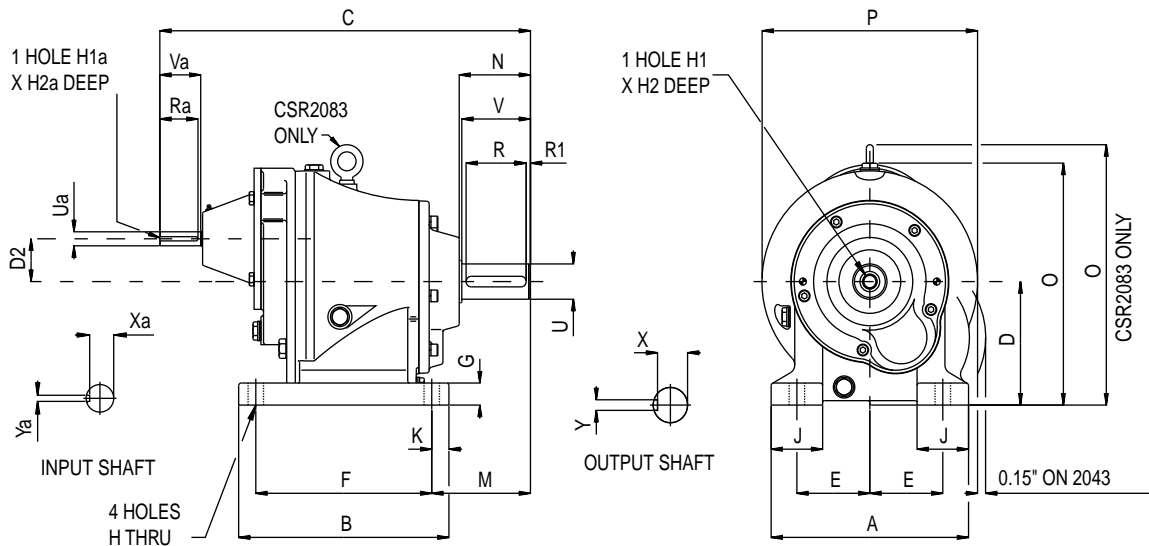
* Shaft diameters of 1.250 & under: +.0000 -.0005

* Shaft diameters over 1.250: +.0000 -.0010

Reducer Size	V	X	Y	AJ	AK	BD	BF	BB	FT	U1	X1	Y1
CMR2032-42C	1.57	0.6390	0.1895	3.75	3.001 / 3.003	4.33	0.30	0.15	0.35	0.3758 / 0.3752	0.047 FLAT	—
CMR2032-48C	1.57	0.6390	0.1895	3.75	3.001 / 3.003	4.33	0.30	0.15	0.35	0.5010 / 0.5003	0.047 FLAT	—
CMR2032-56C	1.57	0.6390	0.1895	5.88	4.501 / 4.503	6.50	0.41	0.15	0.28	0.6260 / 0.6253	0.719 / 0.709	0.1895 / 0.1875
CMR2042-56C	1.97	0.8541	0.252	5.88	4.501 / 4.503	6.50	0.43	0.16	0.35	0.6260 / 0.6253	0.719 / 0.709	0.1895 / 0.1875
CMR2042-140TC	1.97	0.8541	0.252	5.88	4.501 / 4.503	6.50	0.43	0.16	0.35	0.8761 / 0.8753	0.974 / 0.964	0.1895 / 0.1875
CMR2042-180TC	1.97	0.8541	0.252	7.25	8.501 / 8.503	8.94	0.55	0.20	0.55	1.1261 / 1.1253	1.251 / 1.241	0.2520 / 0.2500
CMR2062-56C	2.36	1.1074	0.252	5.88	4.501 / 4.503	6.69	0.43	0.16	0.43	0.6260 / 0.6253	0.719 / 0.709	0.1895 / 0.1875
CMR2062-140TC	2.36	1.1074	0.252	5.88	4.501 / 4.503	6.69	0.43	0.16	0.43	0.8761 / 0.8753	0.974 / 0.964	0.1895 / 0.1875
CMR2062-180TC	2.36	1.1074	0.252	7.25	8.501 / 8.503	8.94	0.55	0.20	0.59	1.1261 / 1.1253	1.251 / 1.241	0.2520 / 0.2500
CMR2062-210TC	2.36	1.1074	0.252	7.25	8.501 / 8.503	8.94	0.55	0.20	0.59	1.3764 / 1.3754	1.528 / 1.518	0.3145 / 0.3125
CMR2072-140TC	3.15	1.4106	0.377	5.88	4.501 / 4.503	6.69	0.43	0.16	0.43	0.8761 / 0.8753	0.974 / 0.964	0.1895 / 0.1875
CMR2072-180TC	3.15	1.4106	0.377	7.25	8.501 / 8.503	9.13	0.55	0.19	0.66	1.1261 / 1.1253	1.251 / 1.241	0.2520 / 0.2500
CMR2072-210TC	3.15	1.4106	0.377	7.25	8.501 / 8.503	9.13	0.55	0.19	0.66	1.3764 / 1.3754	1.528 / 1.518	0.3145 / 0.3125
CMR2072-250TC	3.15	1.4106	0.377	7.25	8.501 / 8.503	9.13	0.55	0.19	0.66	1.6264 / 1.6254	1.806 / 1.796	0.3770 / 0.3750
CMR2082-180TC	3.94	1.8402	0.502	7.25	8.501 / 8.503	9.13	0.55	0.19	0.66	1.1261 / 1.1253	1.251 / 1.241	0.2520 / 0.2500
CMR2082-210TC	3.94	1.8402	0.502	7.25	8.501 / 8.503	9.13	0.55	0.19	0.66	1.3764 / 1.3754	1.528 / 1.518	0.3145 / 0.3125
CMR2082-250TC	3.94	1.8402	0.502	7.25	8.501 / 8.503	9.13	0.55	0.19	0.66	1.6264 / 1.6254	1.806 / 1.796	0.3770 / 0.3750
CMR2082-280TC	3.94	1.8402	0.502	9.00	10.501 / 10.503	11.13	0.55	0.19	0.74	1.8764 / 1.8754	2.106 / 2.096	0.5020 / 0.5000

REDUCER DIMENSIONS -TRIPLE REDUCTION

TYPE CSR



Reducer Size	A	B	C	D	U*	E	F	G	H	H1	H2	J	K	M	N	O	P	R
CSR2043	5.71	6.30	11.60	3.54	1.50	2.17	5.12	0.59	0.39	3/8 UNF	0.87	1.38	0.59	2.95	2.09	7.17	6.30	1.57
CSR2063	7.48	7.87	14.40	4.53	1.91	2.66	6.50	0.71	0.55	3/8 UNF	0.87	2.17	0.69	3.54	2.44	8.94	7.87	1.97
CSR2073	9.06	9.65	17.00	5.51	1.91	3.35	8.07	0.98	0.71	1/2 UNF	1.10	2.36	0.79	4.53	3.27	10.94	9.84	2.76
CSR2083	11.42	12.20	19.67	7.09	2.36	4.23	10.24	1.10	0.71	5/8 UNF	1.42	2.95	0.98	5.51	4.06	14.65	11.81	3.15

Note: Dimension O on CSR2083 includes Eyebolt.

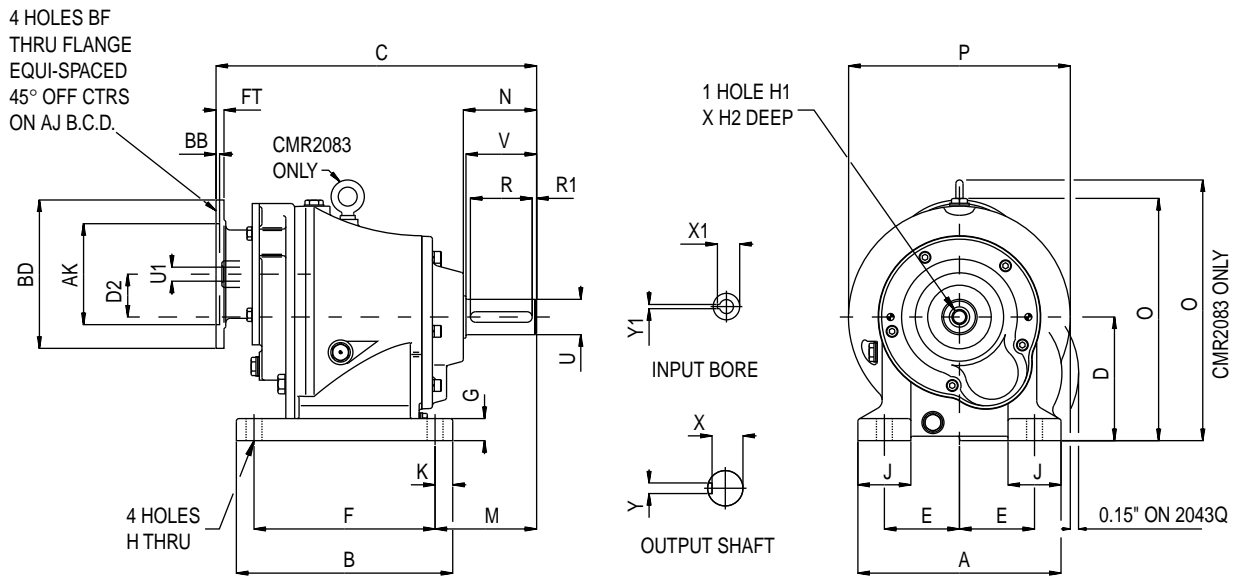
* Shaft diameters of 1.250 & under: +.0000 -.0005

* Shaft diameters over 1.250: +.0000 -.0010

Reducer Size	R1	U	V	X	Y	H1a	H2a	Ra	Ua	Va	Xa	Ya
CSR2043	0.28	1.000	1.97	0.8451	0.252	-	-	1.38	0.5000	1.50	0.4246	0.1270
CSR2063	0.28	1.2500	2.36	1.1074	0.252	-	-	1.75	0.6250	1.88	0.5118	0.1895
CSR2073	0.20	1.6250	3.15	1.4106	0.377	-	-	1.75	0.6250	1.88	0.5118	0.1895
CSR2083	0.39	2.1250	3.94	1.8402	0.502	1/4 UNC	0.63	2.13	0.8750	2.25	0.7660	0.1895

WARNING For safety, Buyer or User should provide protective guards over shaft extensions and any couplings, sheaves and belts, sprockets and chains, etc., mounted thereon.

TYPE CMR



Reducer Size	A	B	C	D	D2	E	F	G	H	H1	H2	J	K	M	N	O	P	R	R1	U*
CMR2043-56C	5.71	6.30	10.27	3.54	1.50	2.17	5.12	0.59	0.39	3/8 UNF	0.87	1.38	0.59	2.95	2.09	7.17	6.30	1.57	0.28	1.000
CMR2063-56C	7.48	7.87	11.69	4.53	1.91	2.66	6.50	0.71	0.55	3/8 UNF	0.87	2.17	0.69	3.54	2.44	8.94	7.87	1.97	0.28	1.250
CMR2063-140TC	7.48	7.87	11.69	4.53	1.91	2.66	6.50	0.71	0.55	3/8 UNF	0.87	2.17	0.69	3.54	2.44	8.94	7.87	1.97	0.28	1.250
CMR2073-56C	9.06	9.65	14.29	5.51	1.91	3.35	8.07	0.98	0.71	1/2 UNF	1.10	2.36	0.79	4.53	3.27	10.94	9.84	2.76	0.20	1.625
CMR2073-140TC	9.06	9.65	14.29	5.51	1.91	3.35	8.07	0.98	0.71	1/2 UNF	1.10	2.36	0.79	4.53	3.27	10.94	9.84	2.76	0.20	1.625
CMR2083-56C	11.42	12.20	16.54	7.09	2.36	4.23	10.24	1.10	0.71	5/8 UNF	1.42	2.95	0.98	5.51	4.06	14.65	11.81	3.15	0.39	2.125
CMR2083-140TC	11.42	12.20	16.54	7.09	2.36	4.23	10.24	1.10	0.71	5/8 UNF	1.42	2.95	0.98	5.51	4.06	14.65	11.81	3.15	0.39	2.125
CMR2083-180TC	11.42	12.20	17.90	7.09	2.36	4.23	10.24	1.10	0.71	5/8 UNF	1.42	2.95	0.98	5.51	4.06	14.65	11.81	3.15	0.39	2.125

Note: Dimension O on CMR2083 includes Eyebolt.

* Shaft diameters of 1.250 & under: +.0000 -.0005

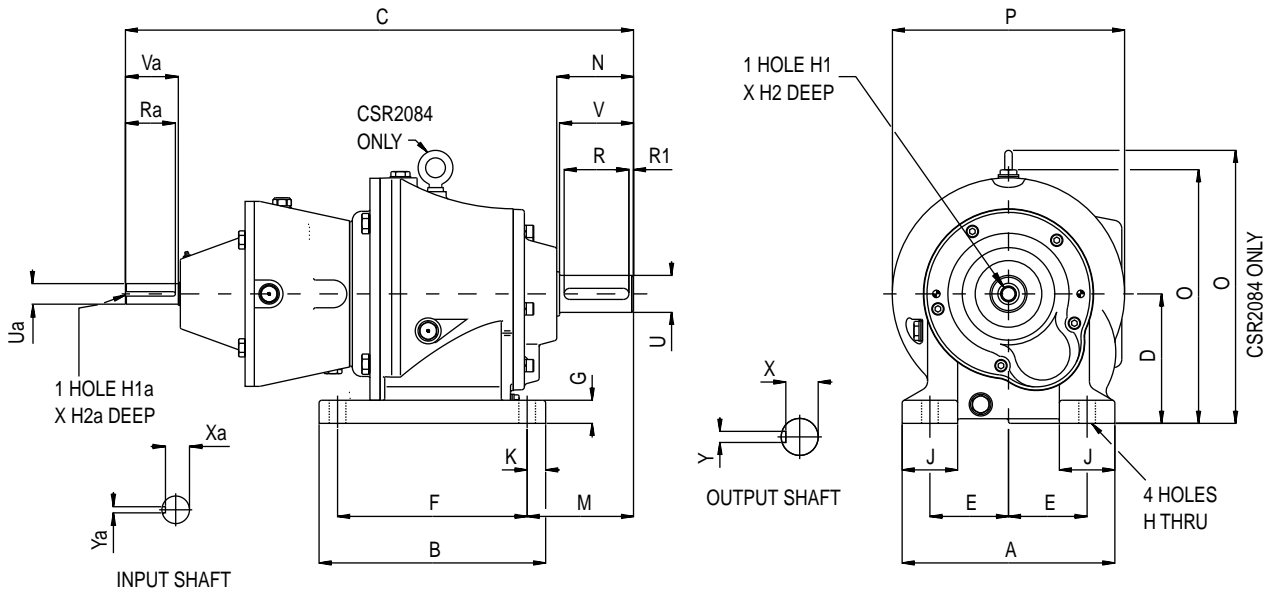
* Shaft diameters over 1.250: +.0000 -.0010

Reducer Size	V	X	Y	AJ	AK	BD	BF	BB	FT	U1	X1	Y1
CMR2043-56C	1.97	0.8541	0.252	5.88	4.501/4.503	6.50	0.43	0.16	0.35	0.6260/0.6253	0.719/0.709	0.1895/0.1875
CMR2063-56C	2.36	1.1074	0.252	5.88	4.501/4.503	6.50	0.43	0.16	0.35	0.6260/0.6253	0.719/0.709	0.1895/0.1875
CMR2063-140TC	2.36	1.1074	0.252	5.88	4.501/4.503	6.50	0.43	0.16	0.35	0.8761/0.8753	0.974/0.964	0.1895/0.1875
CMR2073-56C	3.15	1.4106	0.377	5.88	4.501/4.503	6.50	0.43	0.16	0.35	0.6260/0.6253	0.719/0.709	0.1895/0.1875
CMR2073-140TC	3.15	1.4106	0.377	5.88	4.501/4.503	6.50	0.43	0.16	0.35	0.8761/0.8753	0.974/0.964	0.1895/0.1875
CMR2083-56C	3.94	1.8402	0.502	5.88	4.501/4.503	6.69	0.43	0.16	0.43	0.6260/0.6253	0.719/0.709	0.1895/0.1875
CMR2083-140TC	3.94	1.8402	0.502	5.88	4.501/4.503	6.69	0.43	0.16	0.43	0.8761/0.8753	0.974/0.964	0.1895/0.1875
CMR2083-180TC	3.94	1.8402	0.502	7.25	8.501/8.503	8.94	0.55	0.20	0.59	1.1261/1.253	1.251/1.241	0.2520/0.2500

WARNING For safety, Buyer or User should provide protective guards over shaft extensions and any couplings, sheaves and belts, sprockets and chains, etc., mounted thereon.

REDUCER DIMENSIONS - QUAD REDUCTION

TYPE CSR



Reducer Size	A	B	C	D	E	F	G	H	H1	H2	J	K	M	N	O	P	R	R1	U*
CSR2064	7.48	7.87	17.63	4.53	2.66	6.50	0.71	0.55	3/8UNF	0.87	2.17	0.69	3.84	2.44	8.94	7.87	1.97	0.28	1.250
CSR2074	9.06	9.65	21.63	5.51	3.35	8.07	0.98	0.71	1/2UNF	1.10	2.36	0.79	4.53	3.27	10.94	9.84	2.76	0.20	1.625
CSR2084	11.42	12.20	27.52	7.09	4.23	10.24	1.10	0.71	5/8UNF	1.42	2.95	0.98	5.51	4.06	14.65	11.81	3.15	0.39	2.125

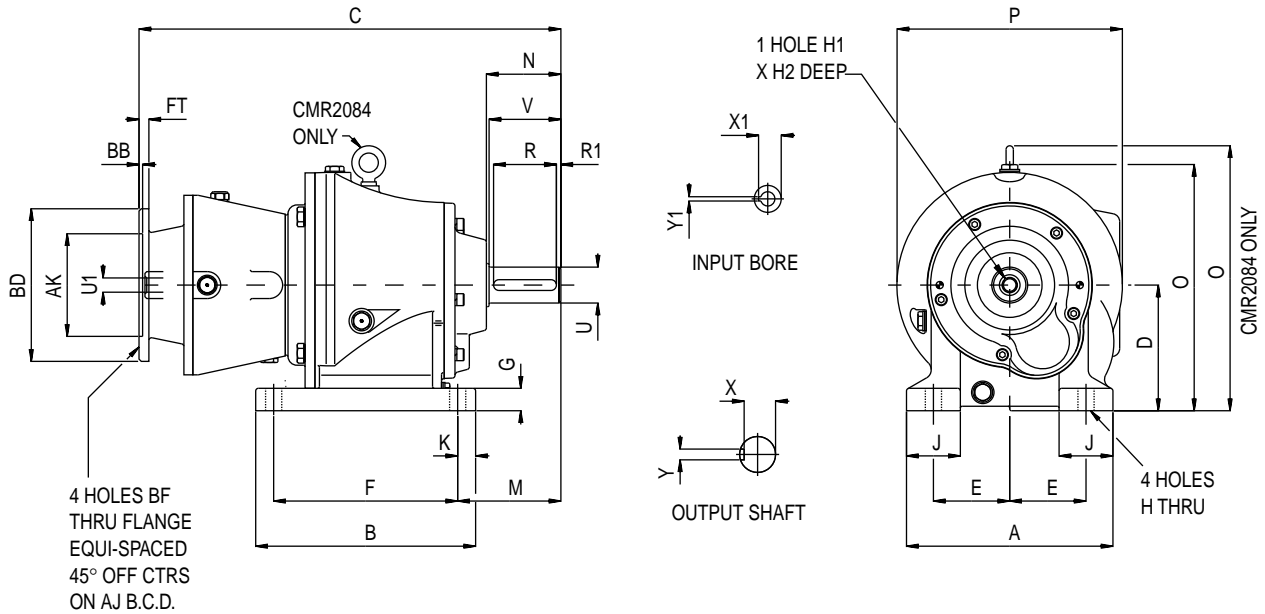
* Shaft diameters of 1.250 & under: +.0000 -.0005

* Shaft diameters over 1.250: +.0000 -.0010

Reducer Size	V	X	Y	H1a	H2a	Ra	Ua	Va	Xa	Ya
CSR2064	2.36	1.107	0.25	-	-	1.75	6.250	1.88	0.512	0.19
CSR2074	3.15	1.411	0.38	1/4UNC	0.63	2.13	0.875	2.25	0.766	0.19
CSR2084	3.94	1.840	0.50	3/8UNF	0.87	2.50	1.125	2.63	0.971	0.25

WARNING For safety, Buyer or User should provide protective guards over shaft extensions and any couplings, sheaves and belts, sprockets and chains, etc., mounted thereon.

TYPE CMR



Reducer Size	A	B	C	D	E	F	G	H	H1	H2	J	K	M	N	O	P	R	R1	U*
CMR2064-56C	7.48	7.87	14.92	4.53	2.66	6.50	0.71	0.55	3/8 UNF	0.87	2.17	0.69	3.54	2.44	8.94	7.87	1.97	0.28	1.250
CMR2064-140TC	7.48	7.87	14.92	4.53	2.66	6.50	0.71	0.55	3/8 UNF	0.87	2.17	0.69	3.54	2.44	8.94	7.87	1.97	0.28	1.250
CMR2074-56C	9.06	9.65	18.51	5.51	3.35	8.07	0.98	0.71	1/2 UNF	1.10	2.36	0.79	4.53	3.27	10.94	9.84	2.76	0.20	1.625
CMR2074-140TC	9.06	9.65	18.51	5.51	3.35	8.07	0.98	0.71	1/2 UNF	1.10	2.36	0.79	4.53	3.27	10.94	9.84	2.76	0.20	1.625
CMR2074-180TC	9.06	9.65	19.86	5.51	3.35	8.07	0.98	0.71	1/2 UNF	1.10	2.36	0.79	4.53	3.27	10.94	9.84	2.76	0.20	1.625
CMR2074-210TC	9.06	9.65	19.86	5.51	3.35	8.07	0.98	0.71	1/2 UNF	1.10	2.36	0.79	4.53	3.27	10.94	9.84	2.76	0.20	1.625
CMR2084-140TC	11.42	12.20	23.00	7.09	4.23	10.24	1.10	0.71	5/8 UNF	1.42	2.95	0.98	5.51	4.06	14.65	11.81	3.15	0.39	2.125
CMR2084-180TC	11.42	12.20	24.68	7.09	4.23	10.24	1.10	0.71	5/8 UNF	1.42	2.95	0.98	5.51	4.06	14.65	11.81	3.15	0.39	2.125
CMR2084-210TC	11.42	12.20	24.68	7.09	4.23	10.24	1.10	0.71	5/8 UNF	1.42	2.95	0.98	5.51	4.06	14.65	11.81	3.15	0.39	2.125
CMR2084-250TC	11.42	12.20	24.68	7.09	4.23	10.24	1.10	0.71	5/8 UNF	1.42	2.95	0.98	5.51	4.06	14.65	11.81	3.15	0.39	2.125

Note: Dimension O on CMR2084 includes Eyebolt.

* Shaft diameters of 1.250 & under: +.0000 -.0005

* Shaft diameters over 1.250: +.0000 -.0010

Reducer Size	V	X	Y	AJ	AK	BD	BF	BB	FT	U1	X1	Y1
CMR2064-56C	2.36	1.1074	0.252	5.88	4.501 / 4.503	6.50	0.43	0.16	0.35	0.6260 / 0.6253	0.719 / 0.709	0.1895 / 0.1875
CMR2064-140TC	2.36	1.1074	0.252	5.88	4.501 / 4.503	6.50	0.43	0.16	0.35	0.8761 / 0.8753	0.974 / 0.964	0.1895 / 0.1875
CMR2074-56C	3.15	1.4106	0.377	5.88	4.501 / 4.503	6.69	0.43	0.16	0.43	0.6260 / 0.6253	0.719 / 0.709	0.1895 / 0.1875
CMR2074-140TC	3.15	1.4106	0.377	5.88	4.501 / 4.503	6.69	0.43	0.16	0.43	0.8761 / 0.8753	0.974 / 0.964	0.1895 / 0.1875
CMR2074-180TC	3.15	1.4106	0.377	7.25	8.501 / 8.503	8.94	0.55	0.20	0.59	1.1261 / 1.1253	1.251 / 1.241	0.2520 / 0.2500
CMR2074-210TC	3.15	1.4106	0.377	7.25	8.501 / 8.503	8.94	0.55	0.20	0.59	1.3764 / 1.3754	1.528 / 1.518	0.3145 / 0.3125
CMR2084-140TC	3.94	1.8402	0.502	5.88	4.501 / 4.503	6.69	0.43	0.16	0.43	0.8761 / 0.8753	0.974 / 0.964	0.1895 / 0.1875
CMR2084-180TC	3.94	1.8402	0.502	7.25	8.501 / 8.503	9.13	0.55	0.19	0.66	1.1261 / 1.1253	1.251 / 1.241	0.2520 / 0.2500
CMR2084-210TC	3.94	1.8402	0.502	7.25	8.501 / 8.503	9.13	0.55	0.19	0.66	1.3764 / 1.3754	1.528 / 1.518	0.3145 / 0.3125
CMR2084-210TC	3.94	1.8402	0.502	7.25	8.501 / 8.503	9.13	0.55	0.19	0.66	1.6264 / 1.6254	1.806 / 1.796	0.3770 / 0.3750

WARNING For safety, Buyer or User should provide protective guards over shaft extensions and any couplings, sheaves and belts, sprockets and chains, etc., mounted thereon.